

ANNEXATION MAP NO. 36

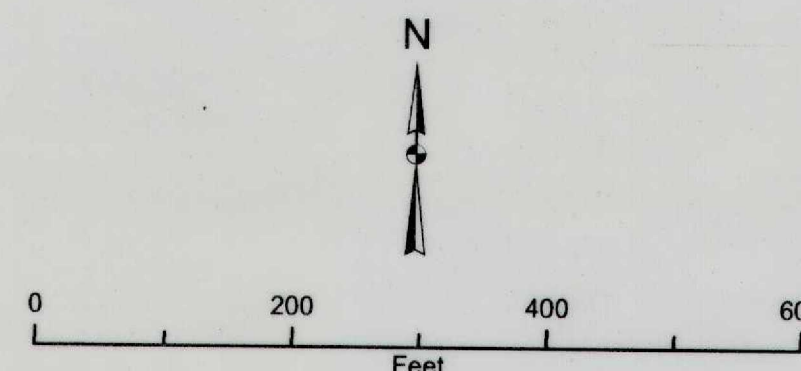
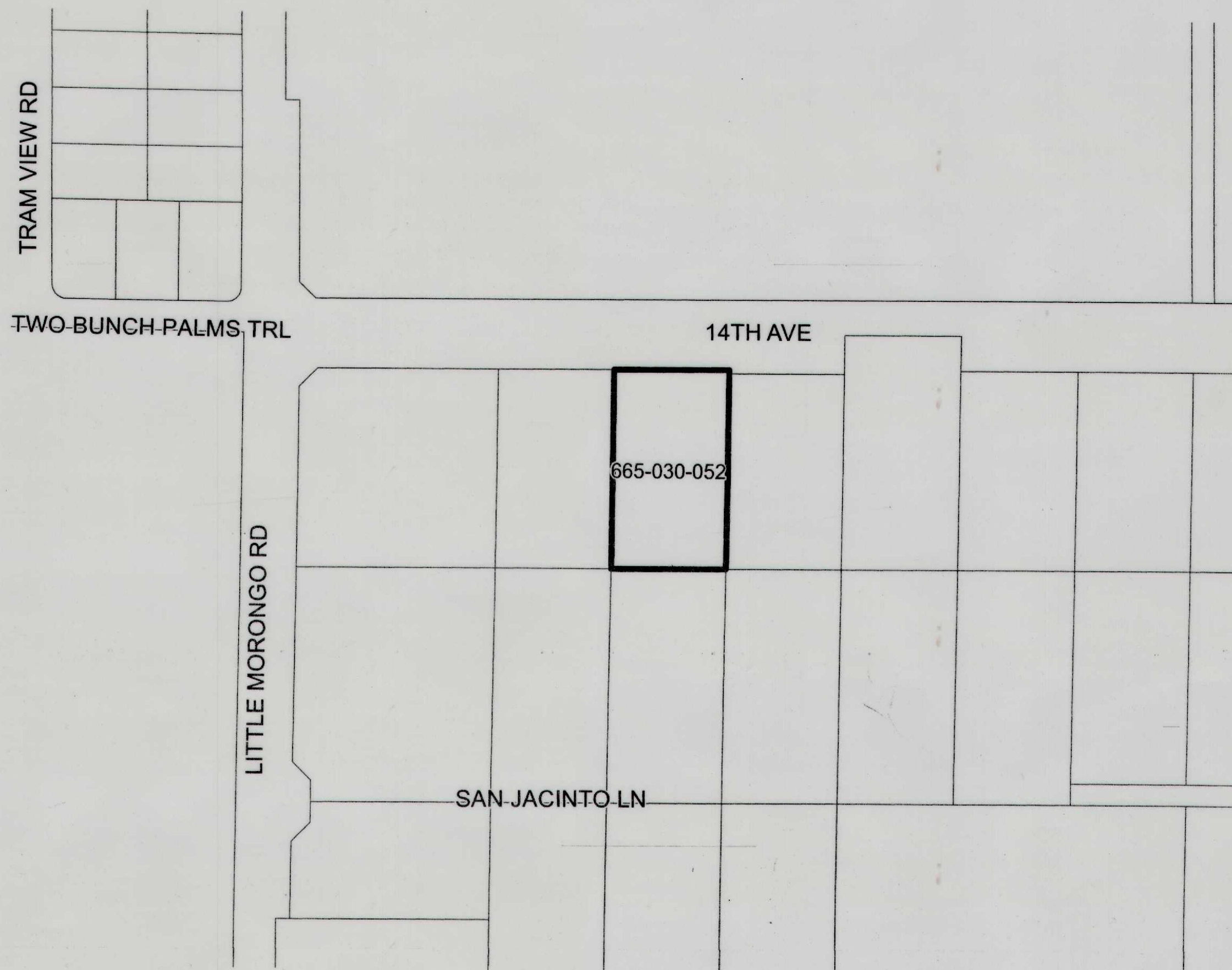
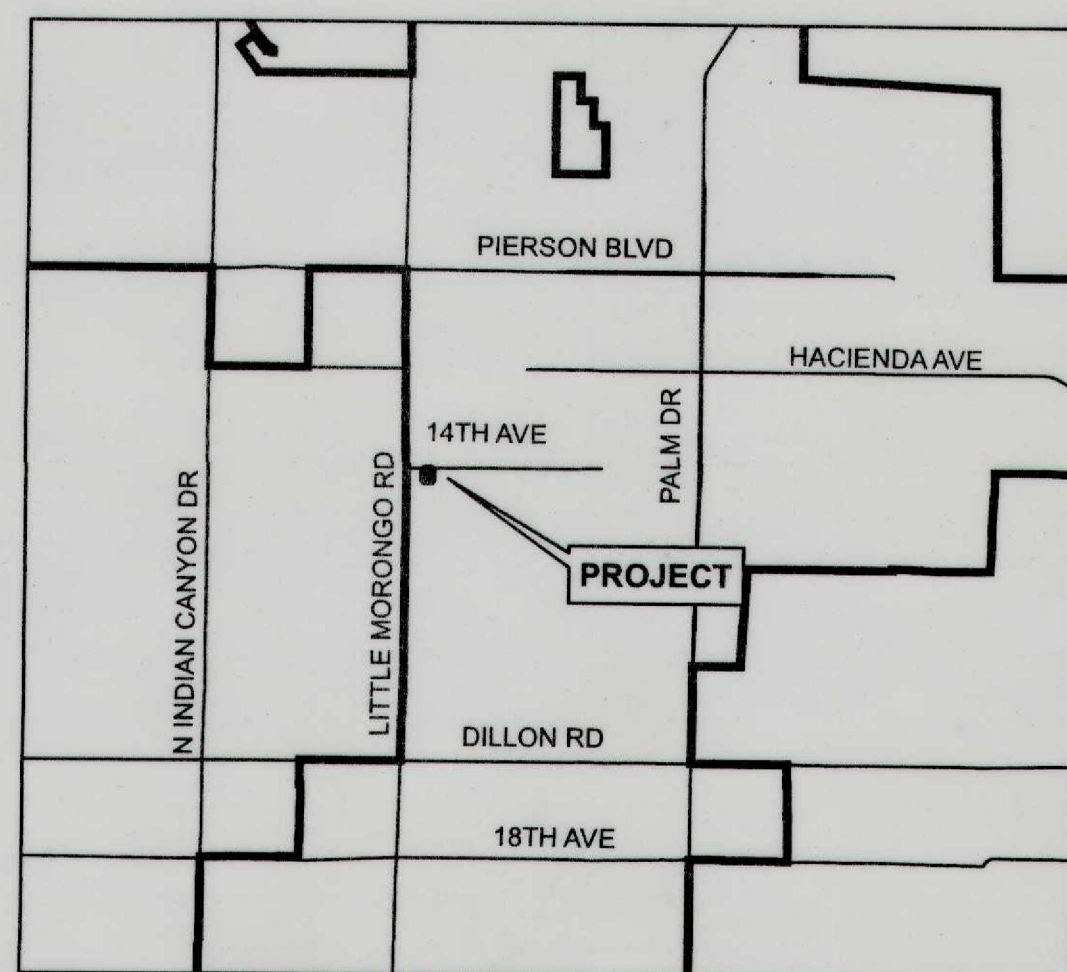
COMMUNITY FACILITIES DISTRICT NO. 2010-1 (SERVICES) CITY OF DESERT HOT SPRINGS COUNTY OF RIVERSIDE, STATE OF CALIFORNIA

THIS MAP SHOWS THE BOUNDARIES OF AREAS TO BE ANNEXED TO COMMUNITY FACILITIES DISTRICT NO. 2010-1 (SERVICES) OF THE CITY OF DESERT HOT SPRINGS, COUNTY OF RIVERSIDE, STATE OF CALIFORNIA. THE BOUNDARIES OF WHICH COMMUNITY FACILITIES DISTRICT ARE SHOWN AND DESCRIBED ON THE MAP THEREOF WHICH WAS PREVIOUSLY RECORDED ON JUNE 8, 2010, IN BOOK 74 OF MAPS OF ASSESSMENT AND COMMUNITY FACILITIES DISTRICTS AT PAGE 81 AND AS INSTRUMENT NO. 2010-0263725, IN THE OFFICE OF THE COUNTY RECORDER OF THE COUNTY OF RIVERSIDE, STATE OF CALIFORNIA.




I HEREBY CERTIFY THAT THE WITHIN MAP OR AREAS TO BE ANNEXED TO COMMUNITY FACILITIES DISTRICT NO. 2010-1 (SERVICES) OF THE CITY OF DESERT HOT SPRINGS, COUNTY OF RIVERSIDE, STATE OF CALIFORNIA, WAS APPROVED BY THE CITY COUNCIL OF THE CITY OF DESERT HOT SPRINGS AT A REGULAR MEETING THEREOF, HELD ON THE 17th DAY OF SEPTEMBER, 2019, BY ITS RESOLUTION NO. 2019-043.

Samuel D. Brown
CITY CLERK
CITY OF DESERT HOT SPRINGS

VICINITY MAP
NOT TO SCALE



LEGEND

-  CFD BOUNDARY
-  PARCEL LINE
-  ASSESSOR PARCEL NUMBER

SHEET 1 OF 1 SHEET

RECORDED THIS 3rd DAY OF October, 2019, AT THE HOUR OF 8:00 O'CLOCK AM, IN BOOK 84 PAGE 23 OF MAPS OF ASSESSMENT AND COMMUNITY FACILITIES DISTRICTS IN THE OFFICE OF THE COUNTY RECORDER, IN THE COUNTY OF RIVERSIDE, STATE OF CALIFORNIA.

FEE: 89 NO.: 2019-0395246
PETER ALDANA, ASSESSOR, COUNTY CLERK, RECORDER

BY: *Samuel D. Brown*
DEPUTY

FILED IN THE OFFICE OF THE CITY CLERK, CITY OF DESERT HOT SPRINGS, THIS 17th DAY OF SEPTEMBER 2019.

Samuel D. Brown
CITY CLERK
CITY OF DESERT HOT SPRINGS

ALBERT A.
WEBB
ASSOCIATES
ENGINEERING CONSULTANTS

THIS ANNEXATION MAP CORRECTLY SHOWS THE LOT OR PARCEL OF LAND INCLUDED WITHIN THE BOUNDARIES OF THE COMMUNITY FACILITIES DISTRICT. FOR DETAILS CONCERNING THE LINES AND DIMENSIONS OF LOTS OR PARCELS REFER TO THE COUNTY ASSESSOR'S MAPS FOR FISCAL YEAR 2019-2020.

M:\GIS-Assessment\DHS\Boundary_CFD2010-1_Annex36.mxd