

ANNEXATION MAP NO. 35

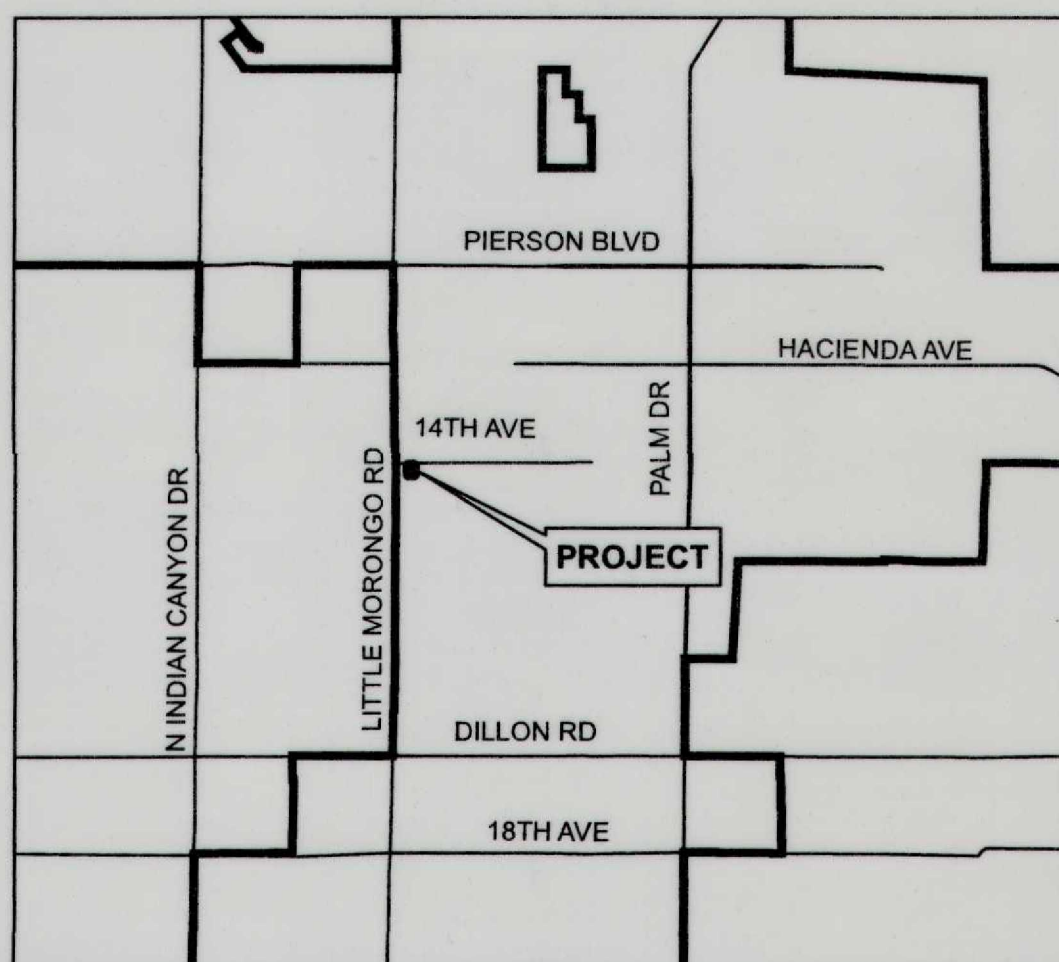
COMMUNITY FACILITIES DISTRICT NO. 2010-1 (SERVICES) CITY OF DESERT HOT SPRINGS COUNTY OF RIVERSIDE, STATE OF CALIFORNIA

THIS MAP SHOWS THE BOUNDARIES OF AREAS TO BE ANNEXED TO COMMUNITY FACILITIES DISTRICT NO. 2010-1 (SERVICES) OF THE CITY OF DESERT HOT SPRINGS, COUNTY OF RIVERSIDE, STATE OF CALIFORNIA. THE BOUNDARIES OF WHICH COMMUNITY FACILITIES DISTRICT ARE SHOWN AND DESCRIBED ON THE MAP THEREOF WHICH WAS PREVIOUSLY RECORDED ON JUNE 8, 2010, IN BOOK 74 OF MAPS OF ASSESSMENT AND COMMUNITY FACILITIES DISTRICTS AT PAGE 81 AND AS INSTRUMENT NO. 2010-0263725, IN THE OFFICE OF THE COUNTY RECORDER OF THE COUNTY OF RIVERSIDE, STATE OF CALIFORNIA.

I HEREBY CERTIFY THAT THE WITHIN MAP OR AREAS TO BE ANNEXED TO COMMUNITY FACILITIES DISTRICT NO. 2010-1 (SERVICES) OF THE CITY OF DESERT HOT SPRINGS, COUNTY OF RIVERSIDE, STATE OF CALIFORNIA, WAS APPROVED BY THE CITY COUNCIL OF THE CITY OF DESERT HOT SPRINGS AT A REGULAR MEETING THEREOF, HELD ON THE 17th DAY OF SEPTEMBER, 2019, BY ITS RESOLUTION NO. 2019-042.

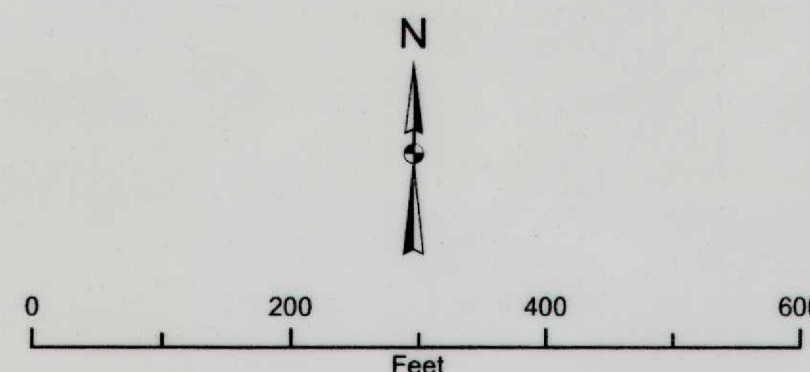
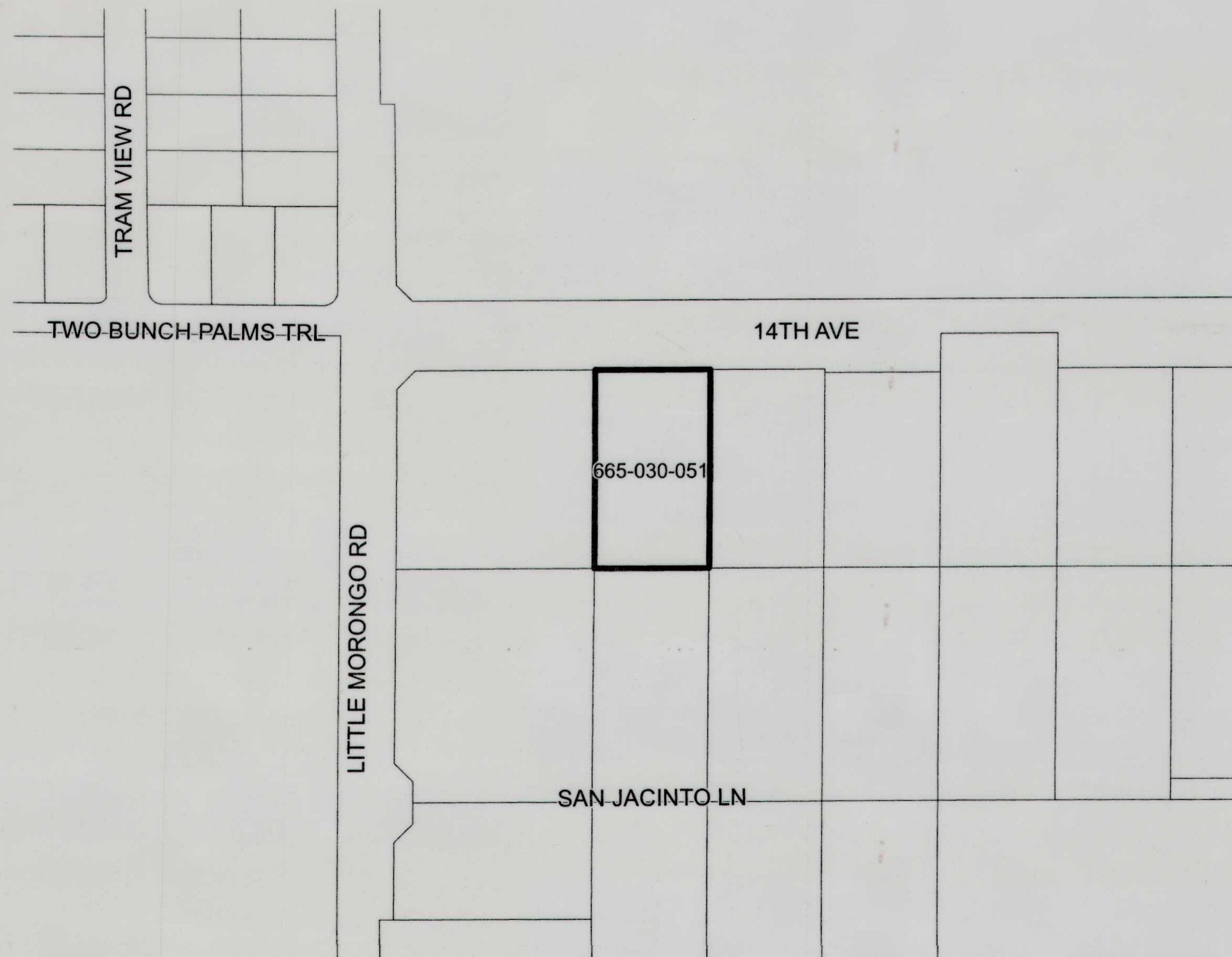
[Signature]
CITY CLERK
CITY OF DESERT HOT SPRINGS

**VICINITY MAP
NOT TO SCALE**



ALBERT A.
WEBB
ASSOCIATES
ENGINEERING CONSULTANTS

THIS ANNEXATION MAP CORRECTLY SHOWS THE LOT OR PARCEL OF LAND INCLUDED WITHIN THE BOUNDARIES OF THE COMMUNITY FACILITIES DISTRICT. FOR DETAILS CONCERNING THE LINES AND DIMENSIONS OF LOTS OR PARCELS REFER TO THE COUNTY ASSESSOR'S MAPS FOR FISCAL YEAR 2019-2020.



RECORDED THIS 3rd DAY OF October, 2019, AT THE HOUR OF 8:00 O'CLOCK A.M., IN IN BOOK 84 PAGE 22 OF MAPS OF ASSESSMENT AND COMMUNITY FACILITIES DISTRICTS IN THE OFFICE OF THE COUNTY RECORDER, IN THE COUNTY OF RIVERSIDE, STATE OF CALIFORNIA.

FEE: \$9 NO.: 2019-0395245
PETER ALDANA, ASSESSOR, COUNTY CLERK, RECORDER

BY: *[Signature]*
DEPUTY

FILED IN THE OFFICE OF THE CITY CLERK, CITY OF DESERT HOT SPRINGS, THIS 17th DAY OF SEPTEMBER, 2019.

[Signature]
CITY CLERK
CITY OF DESERT HOT SPRINGS

LEGEND

- CFD BOUNDARY
- PARCEL LINE
- XXX-XXX-XXX ASSESSOR PARCEL NUMBER