

DESCRIPTION	The HPSigAA™ LED strip luminaire is the compact, efficient, economical option to LED wall lighting. A pure blend of warm color tones and LED efficiency, the HPSigAA luminaire provides functional, low-profile designs with excellent operating performance. Patented modular LightAA™ zero slope drive is simple and energy efficient illumination is putting low and narrow-area accent lighting applications.		Modeling #	LDRV-SL4-E64-E-HSS	Size	A
	Project		Color temp		Data	



SPECIFICATIONS AND FEATURES		
Construction	Electrical	Flux
Designed to meet the demands of the automotive industry, the T4000 is constructed from high-strength aluminum alloy. It features a compact, lightweight design and is available in two configurations: standard and heavy-duty.	The T4000 is designed to meet the demands of the automotive industry. It features a compact, lightweight design and is available in two configurations: standard and heavy-duty.	The T4000 is designed to meet the demands of the automotive industry. It features a compact, lightweight design and is available in two configurations: standard and heavy-duty.

[illegible][illegible]

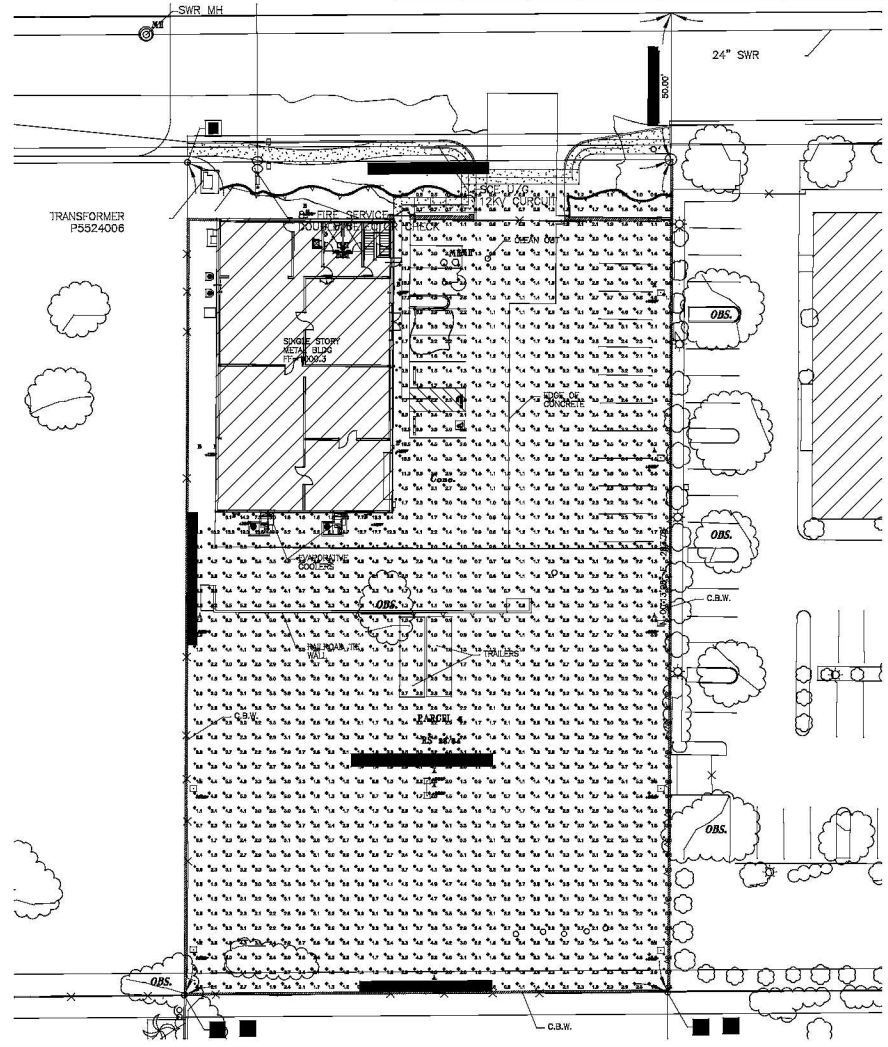
FEATURES & SPECIFICATIONS

[illegible][illegible]

	Index	
1	1	1
2	2	2
3	3	3
4	4	4
5	5	5
6	6	6
7	7	7
8	8	8
9	9	9
10	10	10
11	11	11
12	12	12
13	13	13
14	14	14
15	15	15
16	16	16
17	17	17
18	18	18
19	19	19
20	20	20
21	21	21
22	22	22
23	23	23
24	24	24
25	25	25
26	26	26
27	27	27
28	28	28
29	29	29
30	30	30
31	31	31
32	32	32
33	33	33
34	34	34
35	35	35
36	36	36
37	37	37
38	38	38
39	39	39
40	40	40
41	41	41
42	42	42
43	43	43
44	44	44
45	45	45
46	46	46
47	47	47
48	48	48
49	49	49
50	50	50
51	51	51
52	52	52
53	53	53
54	54	54
55	55	55
56	56	56
57	57	57
58	58	58
59	59	59
60	60	60
61	61	61
62	62	62
63	63	63
64	64	64
65	65	65
66	66	66
67	67	67
68	68	68
69	69	69
70	70	70
71	71	71
72	72	72
73	73	73
74	74	74
75	75	75
76	76	76
77	77	77
78	78	78
79	79	79
80	80	80
81	81	81
82	82	82
83	83	83
84	84	84
85	85	85
86	86	86
87	87	87
88	88	88
89	89	89
90	90	90
91	91	91
92	92	92
93	93	93
94	94	94
95	95	95
96	96	96
97	97	97
98	98	98
99	99	99
100	100	100

Schedule										
Symbol	Label	Quantity	Manufacturer	Catalog Number	Description	Lamp	Number Lamps	Lumens Per Lamp	Light Loss Factor	Wattage
	A	11	EATON - LUMARK (FORMER COOPER LIGHTING)	LDV-SL4-E04-E-HBS	RIDGEVIEW LED AREA/SITE LUMINAIRE (4) LIGHTBARS WITH ASSEMBLED OPTICS - TYPE A W/ SPILL LIGHT CONTROL AND HOUSE SIDE SHIELD. MOUNTED AT 18 FEET	(84) 4000K CCT, 70 CRI LEDS ABSOLUTE PHOTOMETRY BASED ON CALIBRATION FACTORS CREATED USING LAB LUMEN STANDARDS IN GONIOPHOTOMETER WITH TEST DISTANCE OF 18 FEET	84	94	0.9	97.2
	B	6	Lithonia Lighting	TWP 150S	DIE-CAST GENERAL PURPOSE WALLPACK WITH POLYCARBONATE REFRACTOR	ONE 150-WATT CLEAR ED-17 HIGH PRESSURE SODIUM, HORIZONTAL POSITION.	1	15000	0.9	189

Statistics						
Description	Symbol	Avg	Max	Min	Max/Min	Avg/Min
Parking Lot	+	2.7 fc	19.0 fc	0.2 fc	95.0:1	13.5:1




SITE PLAN PHOTOMETRICS

	$1/20^{\circ} = 1^{\circ}-0^{\circ}$	A
--	--------------------------------------	---

REVISIONS	BY

COPYRIGHT 2016

 **SOUTHWEST GROUP**
ENGINEERING CONSULTANTS, INC.

9201 Research Dr. Irvine CA 92618
Tel (949) 387-6988 Fax (949) 387-3993
www.swgengrteering.com

SWG No.	CMA16993
---------	----------

A CUP Application/T.I.L. for:
Ocean Springs Tech. Inc.
145 Two Bunch Palms Trail
Hot Springs, California 92244-4010
Lot 3 RS 025/084
A.P.N. # 666-030-063

ocean springs

DRAWN
GBG
CHECKED
RMI
DATE
07-27-2016
SCALE
1/20" = 1'-0"
JOB NO.
1620.00
SHEET NO.

E1.O