

# **CAL FIRE/Riverside County Fire Department**

## **Emergency Incident Statistics**



**Shawn C. Newman**

**Fire Chief**

8/1/2019

**Report Provided By: Riverside County Fire Department**

**Communications and Technology Division**

**GIS Section**

**Please refer to Map and Incident by Battalion, Station, Jurisdiction**

Incidents Reported for the month of July, 2019 and City of Desert Hot Springs And Both (Code 2, Alpha, Omega, Code 3, Charlie, Delta, Bravo, Echo)  
\*Incidents are shown based on the primary response area for the incident location. This does not represent total response times for all units only the first unit in.



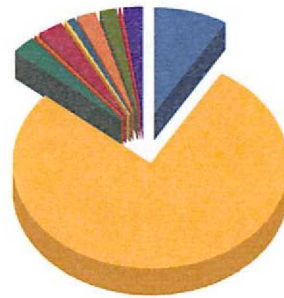
## City of Desert Hot Springs Fire Services



Year: 2019													Total
	January	February	March	April	May	June	July	August	September	October	November	December	
<b>Response Activity</b>													
False Alarm						32	36						68
Haz Mat						0	0						0
Medical						294	394						688
Other Fire						7	12						19
Other Misc						2	1						3
Public Assist						14	12						26
Res Fire						0	2						2
Ringing Alarm						1	3						4
Standby						2	9						11
Traffic Collision						14	9						23
Vehicle Fire						2	1						3
Wildland Fire						1	9						10
						369	418						787

## Response Activity

**Incidents Reported for the month of July,2019 and City of Desert Hot Springs And Both (Code 2, Alpha, Omega, Code 3, Charlie, Delta, Bravo, Echo)**



False Alarm	36	8.6%
Medical	324	77.5%
Other Fire	12	2.9%
Other Misc	1	0.2%
Public Service Assist	12	2.9%
Res Fire	2	0.5%
Ringing Alarm	3	0.7%
Standby	9	2.2%
Traffic Collision	9	2.2%
Vehicle Fire	1	0.2%
Wildland Fire	9	2.2%
Total:	418	100.0%

False Alarm	36
Medical	324
Other Fire	12
Other Misc	1
Public Service Assist	12
Res Fire	2
Ringing Alarm	3
Standby	9
Traffic Collision	9
Vehicle Fire	1
Wildland Fire	9
<b>Incident Total:</b>	<b>418</b>

### Average Enroute to Onscene Time\*

Enroute Time = When a unit has been acknowledged as responding. Onscene Time = When a unit has been acknowledge as being on scene. For any other statistic outside Enroute to Onscene please contact the IT Help Desk at 951-940-6900

<5 Minutes	+5 Minutes	+10 Minutes	+20 Minutes	Average	% 0 to 5 min
286	130	13	1	4.3	68.4%

\*CODE 3 and CODE 2 incidents are included in the total count of incidents and the average Enroute to Onscene Time.

### Incidents by Battalion, Station and Jurisdiction

			False Alarm	Medical	Other Fire	Other Misc	Public Service	Res Fire	Ringling Alarm	Standby	Traffic Collisio	Vehicle Fire	Wildlan d Fire	Total
<b>Battalion 10</b>	Station 35	City of Desert Hot Springs	0	0	0	0	0	0	0	0	0	0	1	1
	Thousand Palms													
	Station Total		0	0	0	0	0	0	0	0	0	0	1	1
	Station 36 North	City of Desert Hot Springs	1	12	0	0	0	0	0	2	0	0	3	18
	Palm Springs													
	Station Total		1	12	0	0	0	0	0	2	0	0	3	18
	Station 37 Desert	City of Desert Hot Springs	35	312	12	1	12	2	3	7	9	1	5	399
	Hot Springs													
	Station Total		35	312	12	1	12	2	3	7	9	1	5	399
<b>Battalion Total</b>			36	324	12	1	12	2	3	9	9	1	9	418
<b>Grand Total</b>			36	324	12	1	12	2	3	9	9	1	9	418

## Incidents by Jurisdiction

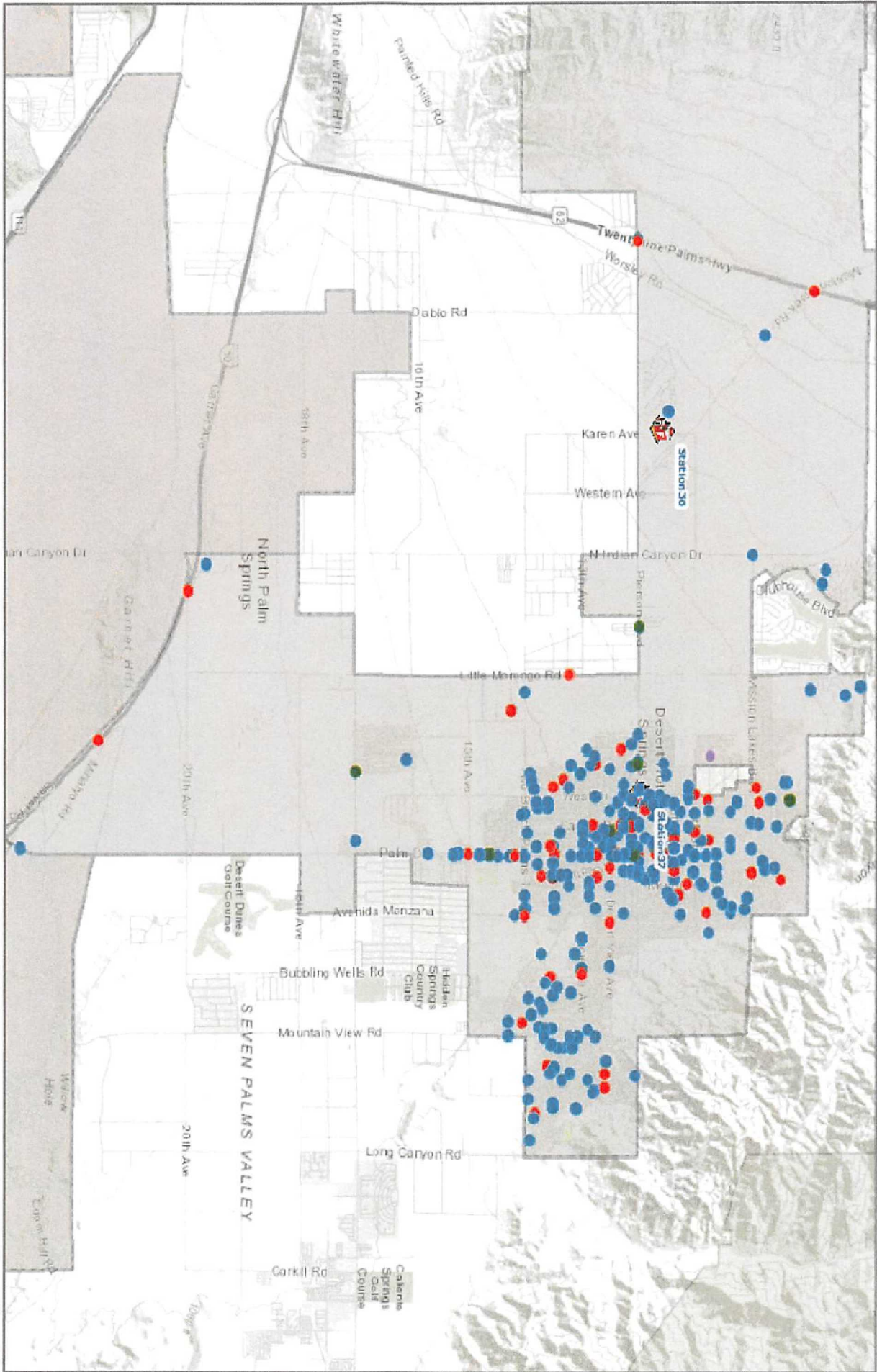
	False Alarm	Medical	Other Fire	Other Misc	Public Service	Res Fire	Ring Alarm	Standby	Traffic Collisio	Vehicle Fire	Wildlan d Fire	Total
City of Desert Hot Springs	36	324	12	1	12	2	3	9	9	1	9	418
<b>Grand Total</b>	<b>36</b>	<b>324</b>	<b>12</b>	<b>1</b>	<b>12</b>	<b>2</b>	<b>3</b>	<b>9</b>	<b>9</b>	<b>1</b>	<b>9</b>	<b>418</b>

## Incidents by Supervisorial District - Summary

	DISTRICT 4 V. MANUEL PEREZ	Grand Total
False Alarm	36	36
Medical	324	324
Other Fire	12	12
Other Misc	1	1
Public Service Assist	12	12
Res Fire	2	2
Ringling Alarm	3	3
Standby	9	9
Traffic Collision	9	9
Vehicle Fire	1	1
Wildland Fire	9	9
<b>Total</b>	<b>418</b>	<b>418</b>



MONTH = 7 and YEAR = 2019 and CITYNAME = 'Desert Hot Springs'



Legend

- Fire
- Hazard
- Haz Mat
- Medical
- Other Misc
- PSA
- Riverside County
- Reservations
- Fire Station
- Casinos