

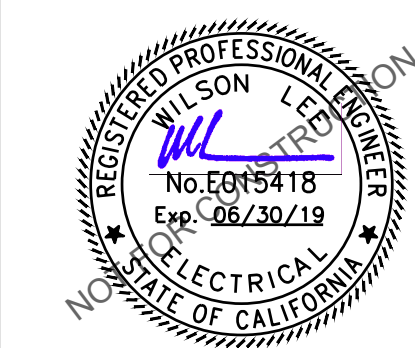


**COPYRIGHT NOTICE**

This drawing was prepared for use on a specific site contemporaneously with its issue date and it is not suitable for use on a different project site or at a later time. Use of this drawing for reference or example on another project requires the services of properly licensed architects and engineers. Reproduction of this drawing for reuse on another project is not authorized and may be contrary to the law

**ACIES**  
**ENGINEERING**  
3371 Olcott Street  
Santa Clara, CA 95054  
ph: (408) 522-5255  
fx: (408) 522-5260  
info@acies.net  
Copyright © 2018

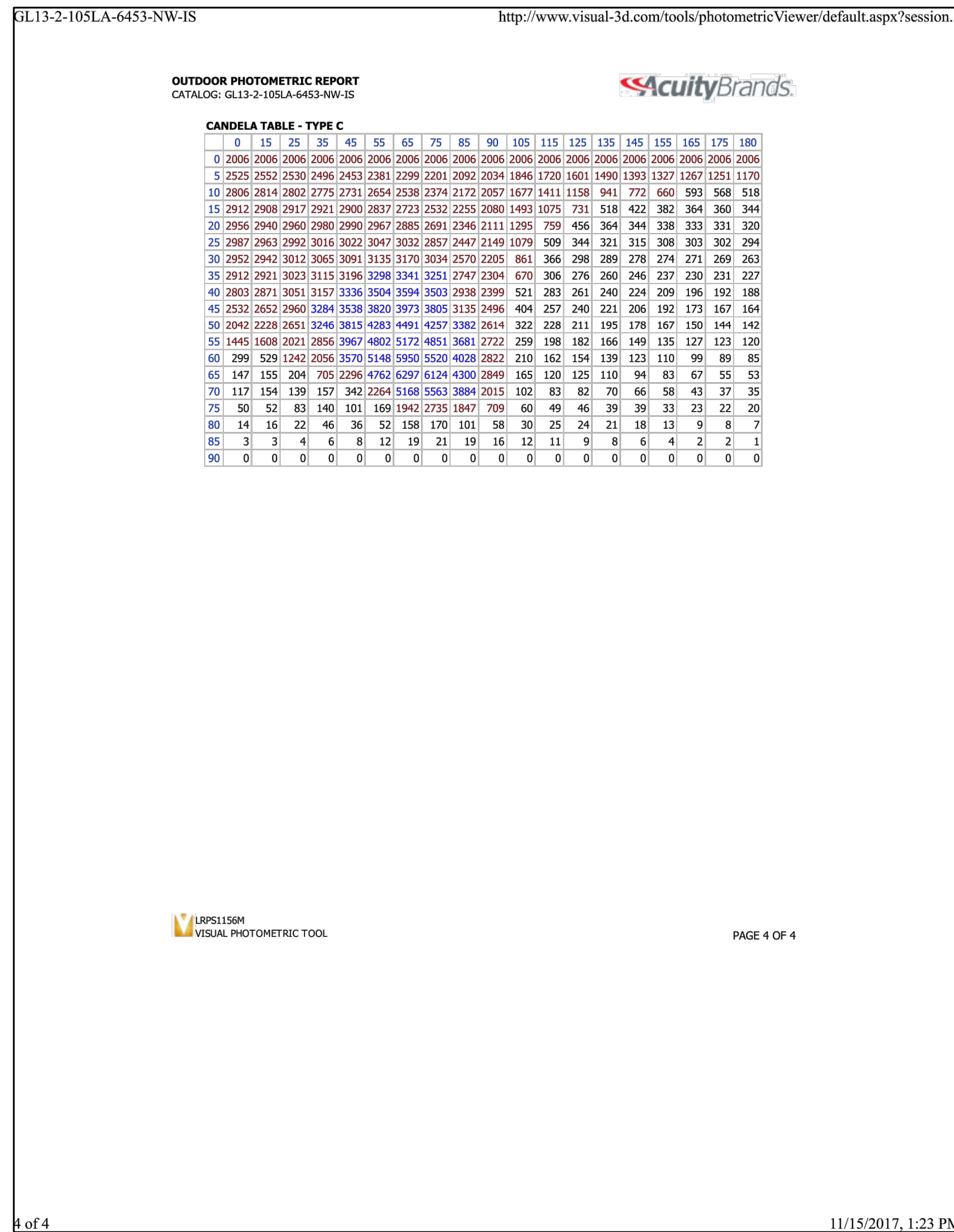
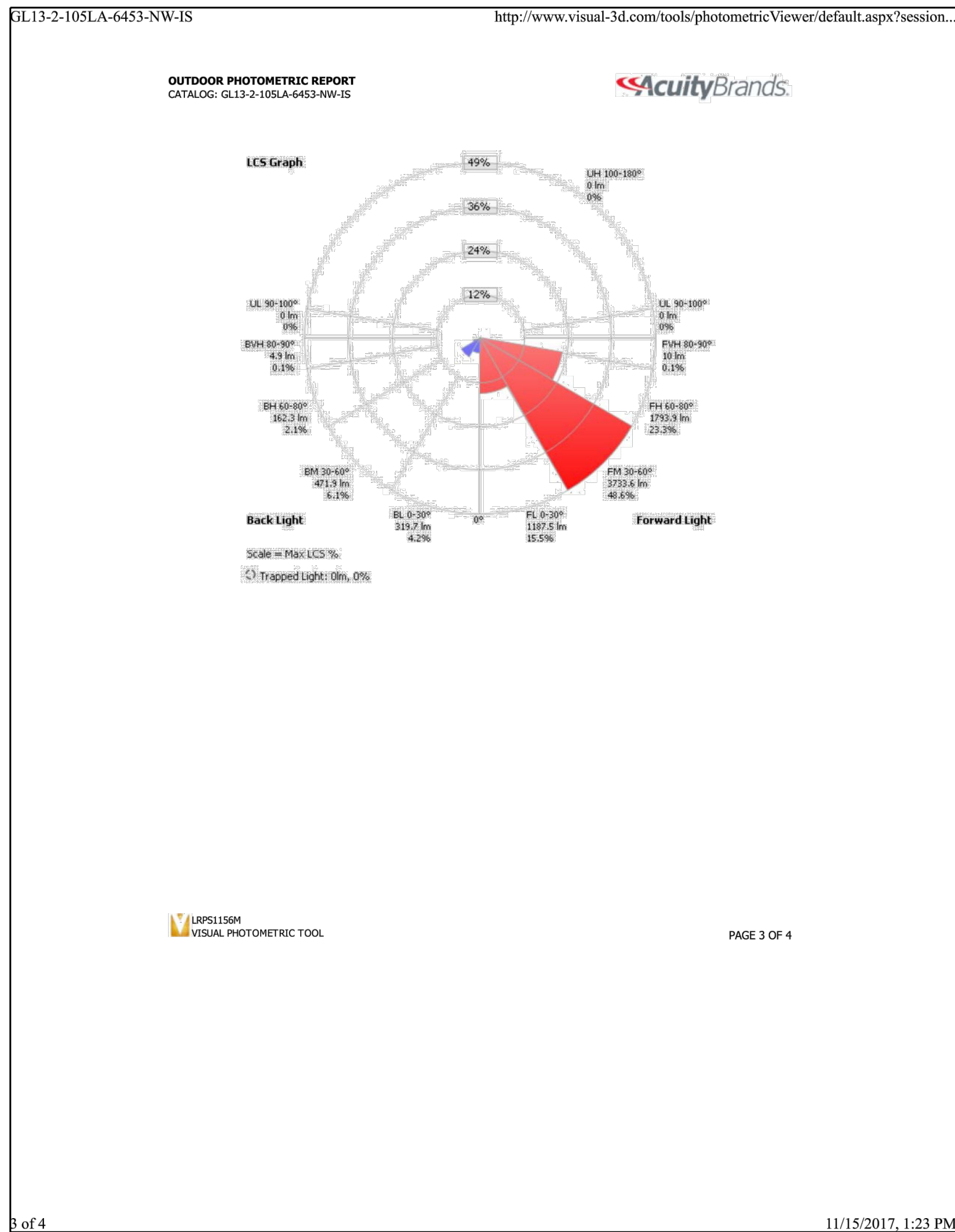
APN: 656-020-034  
DESERT HOT SPRINGS, CA 92240

[illegible]

DATE:	
DRAWN BY:	JBE
CHECKED BY:	NGE
JOB #	

## ELECTRICAL PHOTOMETRIC PLAN

## EP1.2





Industrial Strength LED Lighting  
888-998-LEDS (5337)  
[www.SolarElectricway.com](http://www.SolarElectricway.com)

## FULL CUTOFF WALL PACK



### Dimension

unit: inch/mm





### Specifications

Model:	SWWMS20WFCWP	SWWMS30WFCWP	SWWMS40WFCWP
Product Designation:	Full Cutoff Wall Pack	Full Cutoff Wall Pack	Full Cutoff Wall Pack
Voltage:	120-277V	120-277V	120-277V
Wattage:	20W	30W	40W
Lumens (Nominal):	2000LM	3000LM	4500LM
Efficacy (lpw):	100lm/W	100lm/W	112lm/W
Color Temperature:	4000K/5000K	4000K/5000K	4000K/5000K
CRI:	≥70	≥70	≥70
PF:	≥0.9	≥0.9	≥0.9
Dimmable:	Optional	Optional	Optional
Size:	227.7x172x105mm (8.96x6.77x4.13in.)	227.7x172x105mm (8.96x6.77x4.13in.)	227.7x172x105mm (8.96x6.77x4.13in.)
Photocell:	Optional	Optional	Optional
Working temperature:	-25°C to 40°C	-25°C to 40°C	-25°C to 40°C
Finish:	Black/Dark Bronze	Black/Dark Bronze	Black/Dark Bronze
Working location:	Damp and Wet Location	Damp and Wet Location	Damp and Wet Location
Life Hours:	≥50000hr	≥50000hr	≥50000hr
UL Listed:	Compliant	Compliant	Compliant
FCC:	Compliant	Compliant	Compliant
DLC Listed:	Compliant	Compliant	Compliant
Warranty:	5 Years	5 Years	5 Years
Equivalent:	50W HID	50W HID	100W HID











