

Native Animals

Gamble's Quail	Mountain Lion
Coyote	Big Horn Sheep
Greater Roadrunner	Black-tailed Hare
Burrowing Owl	Desert Cotton Tail
Desert Wood Rat	Desert Kangaroo Rat
Snakes	Cactus Wren
Scorpions	Kit Fox
Flat-tailed Horned Lizard	

Native Plants

Creosote Bush	Trumpet Flower
Brittle Bush	Calif. Buckwheat
Ephedra	White Sage
Indigo	Cattle Cabbage
Cats Claw	Ratney
Teddy Bear Cholla	Pygmy Cedar
Beaver Tail Cactus	Cheese Bush

What to Bring

- Water
- Hiking Shoes
- Proper Clothing
- Compass
- Walking Stick
- Whistle
- Hat
- Sunscreen
- Cell Phone
- Mirror

Safety

- Watch for snakes
- Check in at the Kiosk
- Let someone know where you will be hiking
- Avoid Hiking Alone
- Bring Cell Phone
- Plenty of water

Enjoy

- | | |
|-----------------|--------------------------|
| • Flora | Paul C. Bragg's Monument |
| • Fauna | Geological Wonders |
| • Take Pictures | Colorado River Aqueduct |
| • Scenic View | Fresh Air |

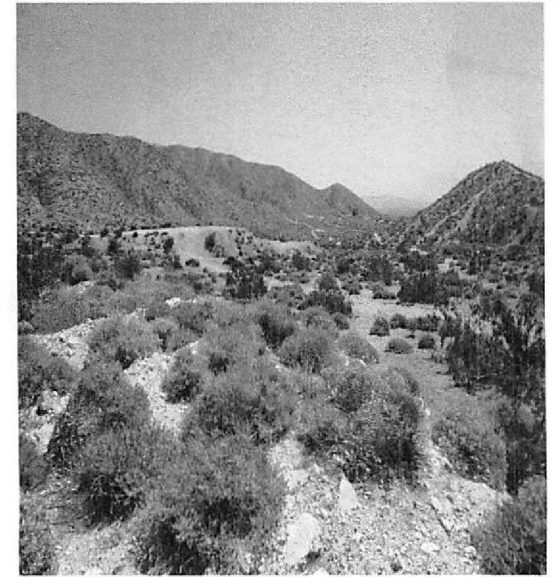


Community and Cultural Affairs Trails Committee Mission Statement

"To ensure clean, safe and marked hiking trails in the city of Desert Hot Springs and its sphere of influence".

City of Desert Hot Springs
65950 Pierson Blvd.
Desert Hot Springs CA 92240
Phone (760)-329-6411

Desert Hot Springs Welcomes you to Blind Canyon



Located at the top of Santa Cruz Rd.
Desert Hot Springs CA 92240

Directions from Interstate 10 :
Take Palm Dr Exit . Stay on Palm through
the City. Make left on Casa Grande. Make a
right on Santa Cruz for Parking.

Look for the Kiosk at the start of the trails for
more information and registration.

Subcommittee Members

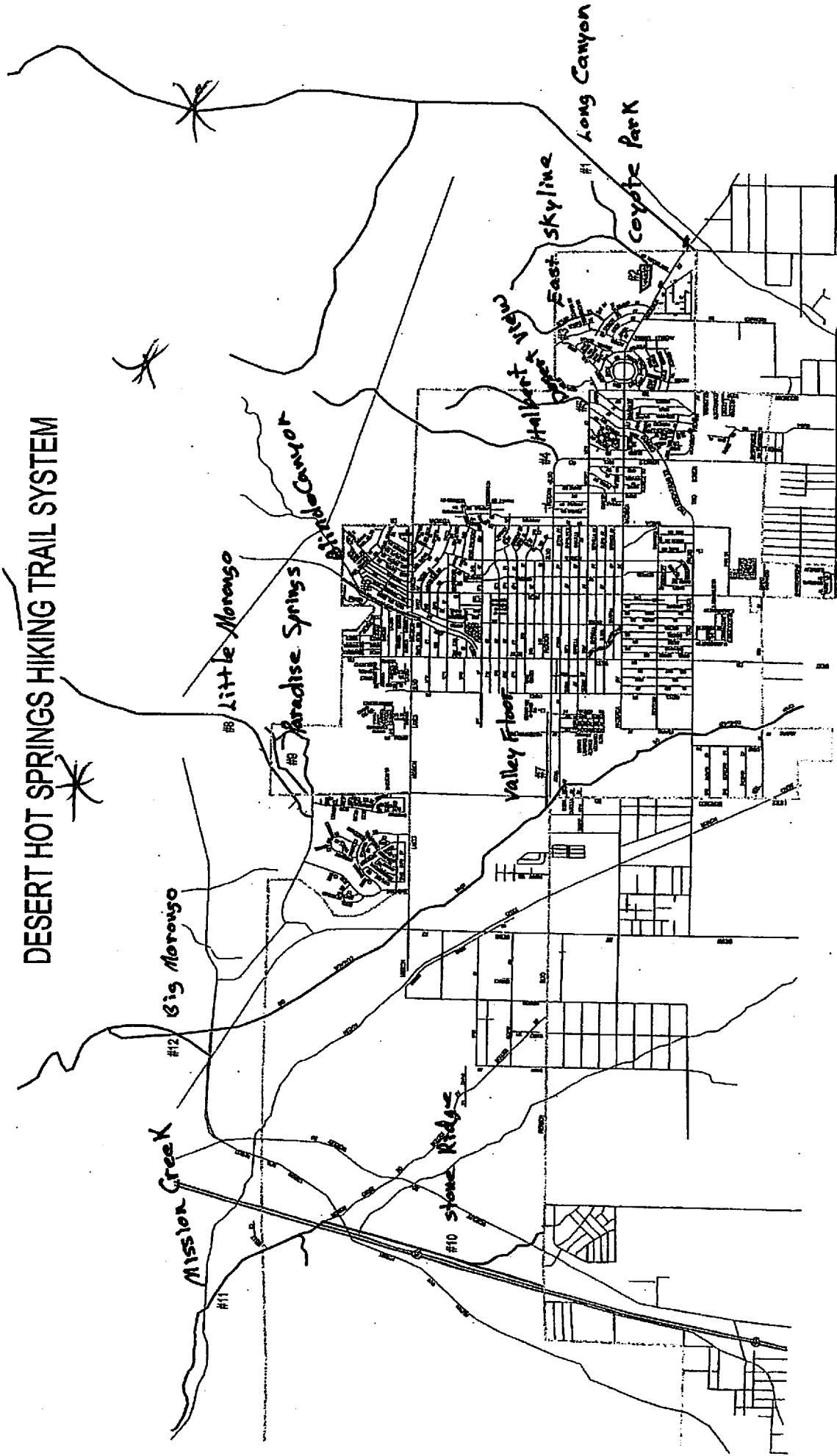
Michael R. Burke <mburke@burkemedias.pro>
Bruce Abney <bruce@elmoroccoinn.com>,
Mariana Maguire <mariana@conservationlands.org>,
Scott Matas <smatas@cityofdhs.org>,
John Gerardi <jgerardi@roadrunner.com>,
Mary Hutchinson <mdlhutch@roadrunner.com>,
Anayeli Zavala <Anayeli2007@hotmail.com>,
Scott Matas <swmatas@gmail.com>,
Pamela Berry <pjsandsand08@gmail.com>
Larry Buchanan <larry4dhs@yahoo.com>,

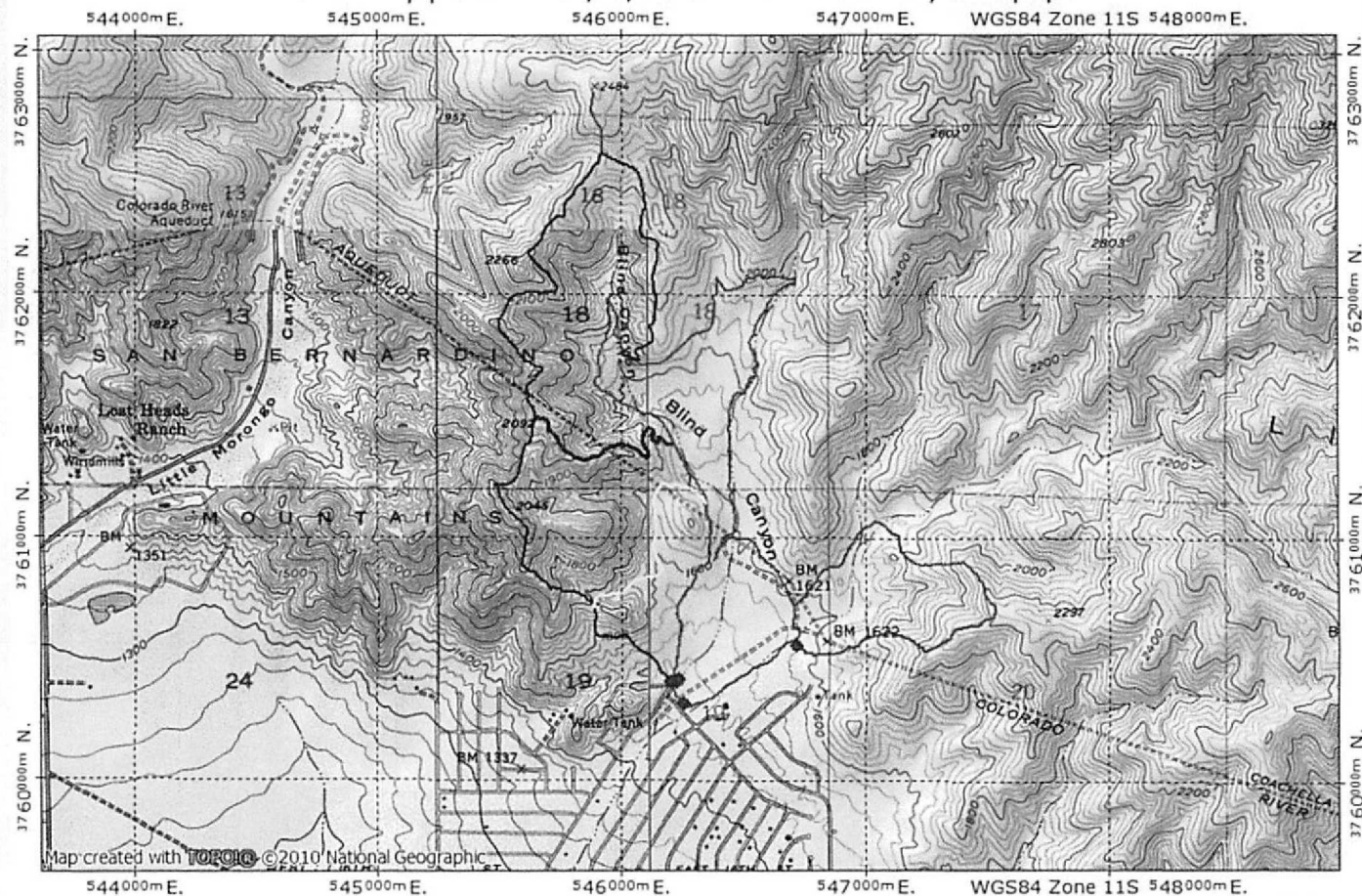
Manuel Perez Office Contact

Stephanie Virgen SVirgen@rivco.org / (760) 863-8211

Miracle Hill Master Plan

DESERT HOT SPRINGS HIKING TRAIL SYSTEM





**NATIONAL
GEOGRAPHIC**

0.0 0.5 1.0 miles
0.0 0.5 1.0 1.5 km

TN MN
12°

Gray Trail	=====
TLC Trail	=====
Big Mama	=====
The Rim Trail	=====
Yucca Trail	=====
Perimeter Trail	=====
Hillside Trail	=====
Triangle Trail	=====
Sand Walking Trail	=====

Trail	Length	Time	Difficulty	Description
Gray Trail	2.5 miles	1.5 hours	Difficult	Loop Trail
TLC Trail	2.5 miles	1.5 hours	Difficult	Steep Inclines
Big Mama	2.0 miles	1.5 hours	Difficult	Loop Trail
The Rim Trail	4.0 miles	4.0 hours	Strenuous	Steep Inclines
Yucca Trail	8.0 miles	8.0 hours	Strenuous	Steep Inclines
Perimeter Trail	2.5 miles	1.5 hours	Moderate	Loop Trail
Hillside Trail	2.0 miles	50 minutes	Moderate	Loop Trail
Triangle Trail	1.5 miles	45 minutes	Easy	Loop Trail
Sand Walking Trail	2.0 miles	60 minutes	Easy	Deep Sand