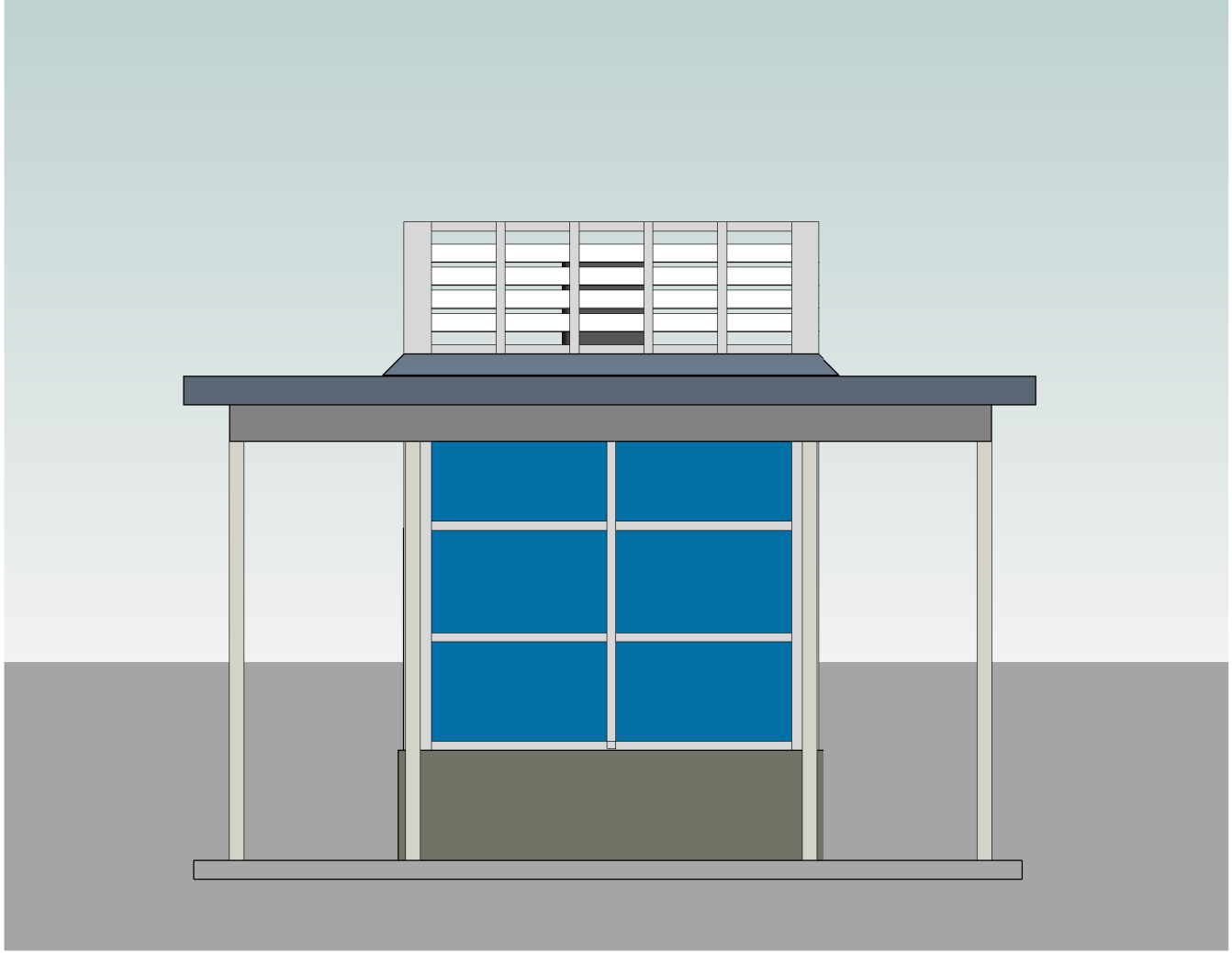




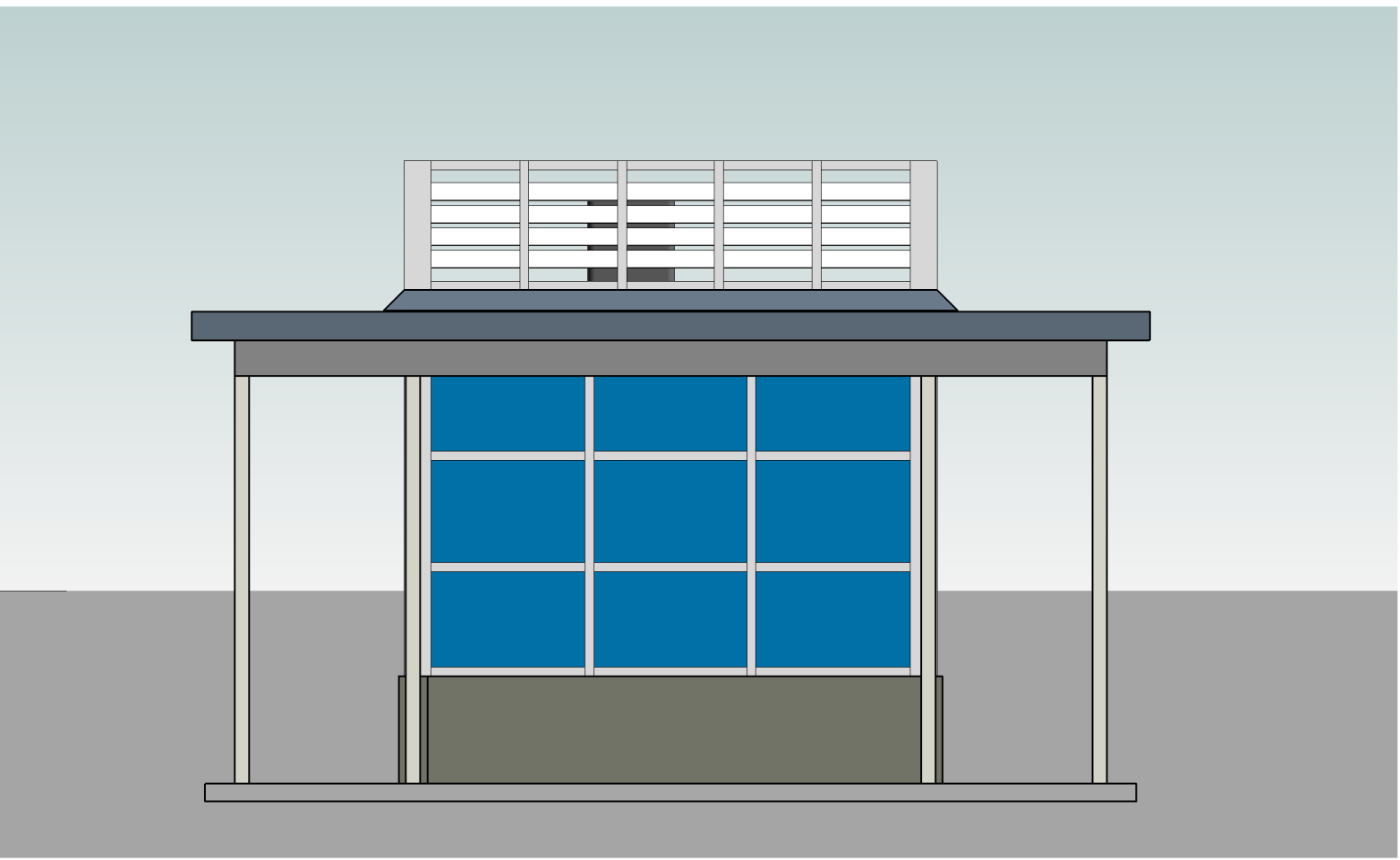
EAST ELEV

Scale: 1/4" = 1'-0"



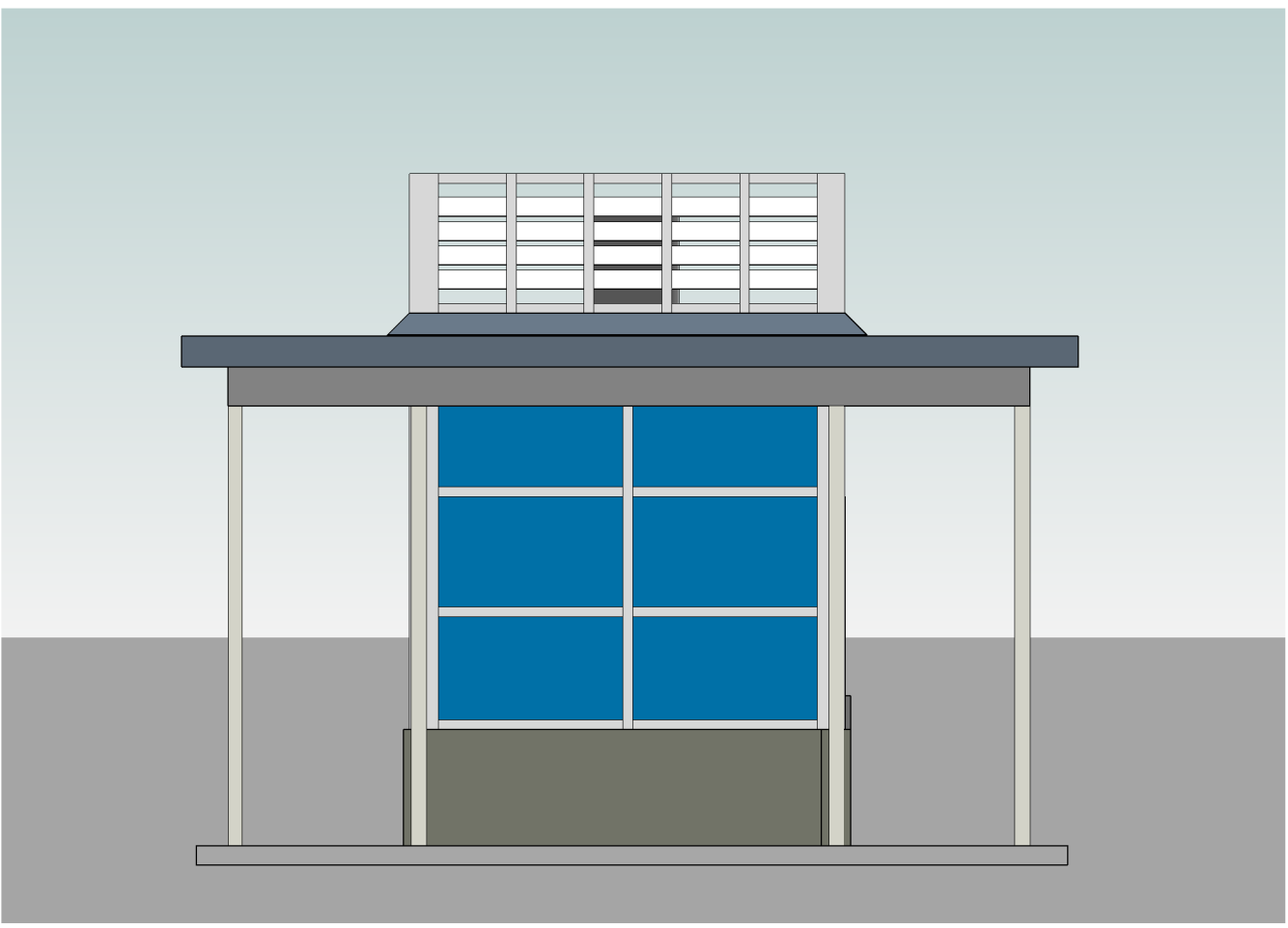
NORTH ELEV

Scale: 1/4" = 1'-0"



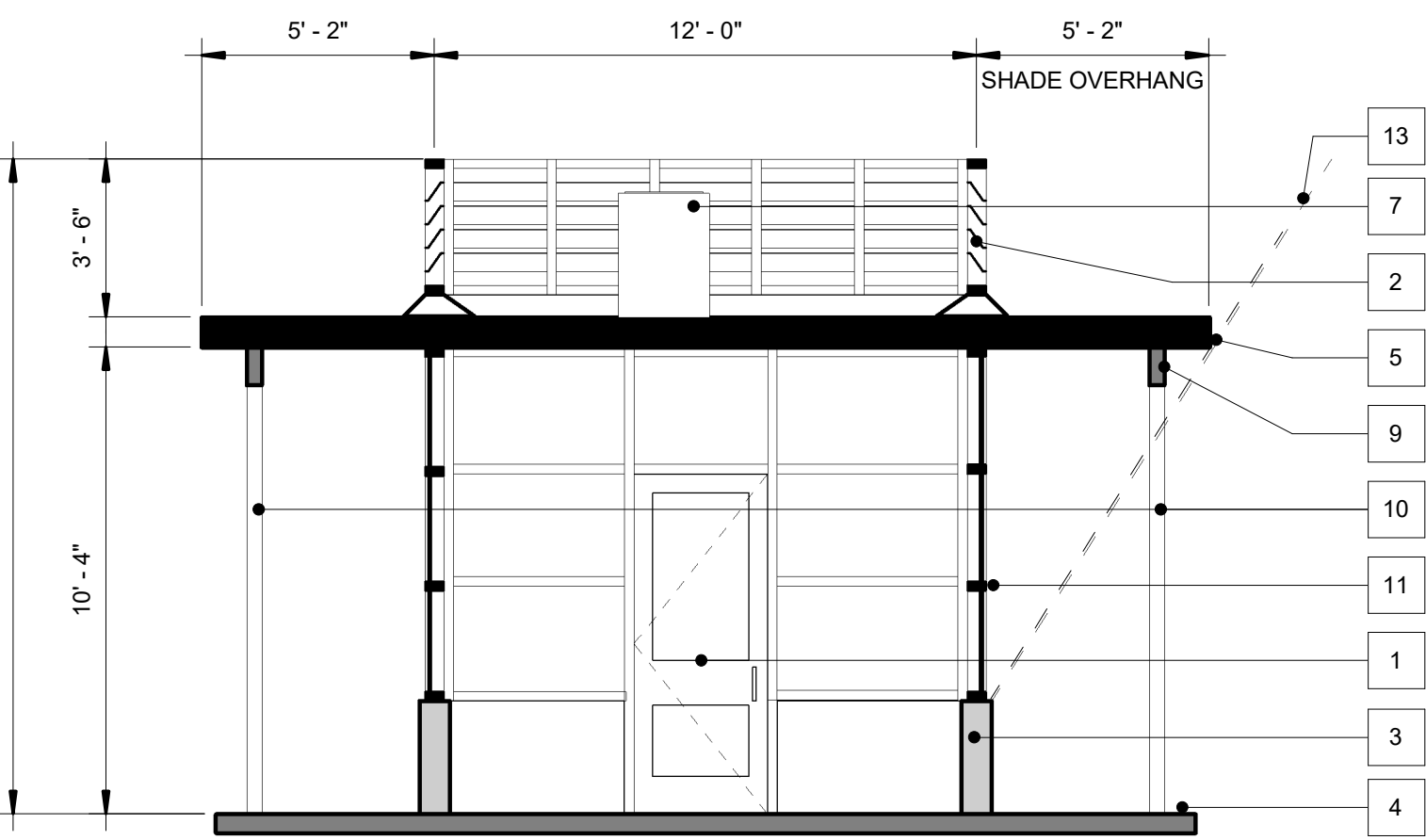
WEST ELEV

Scale: 1/4" = 1'-0"



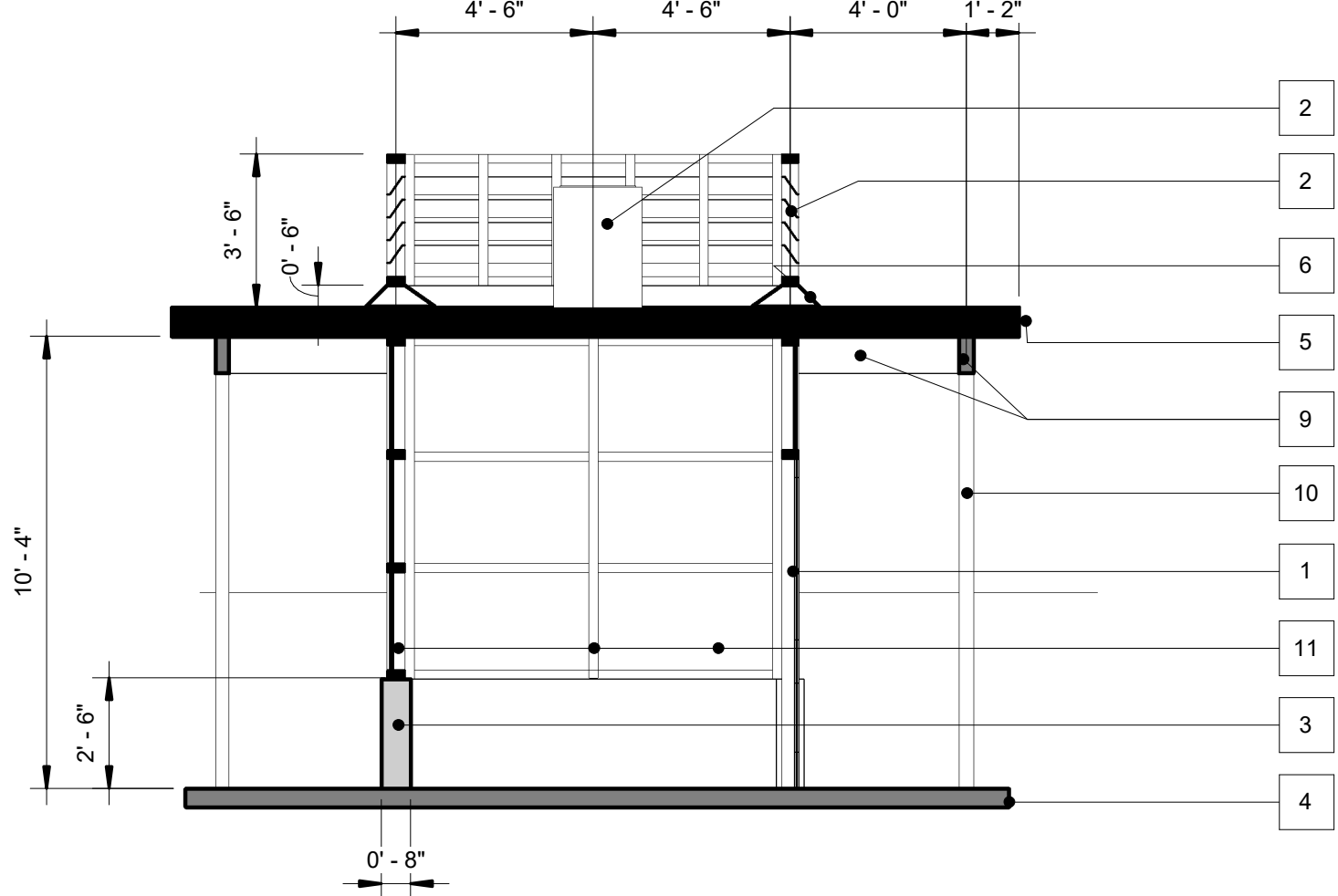
SOUTH ELEV

Scale: 1/4" = 1'-0"



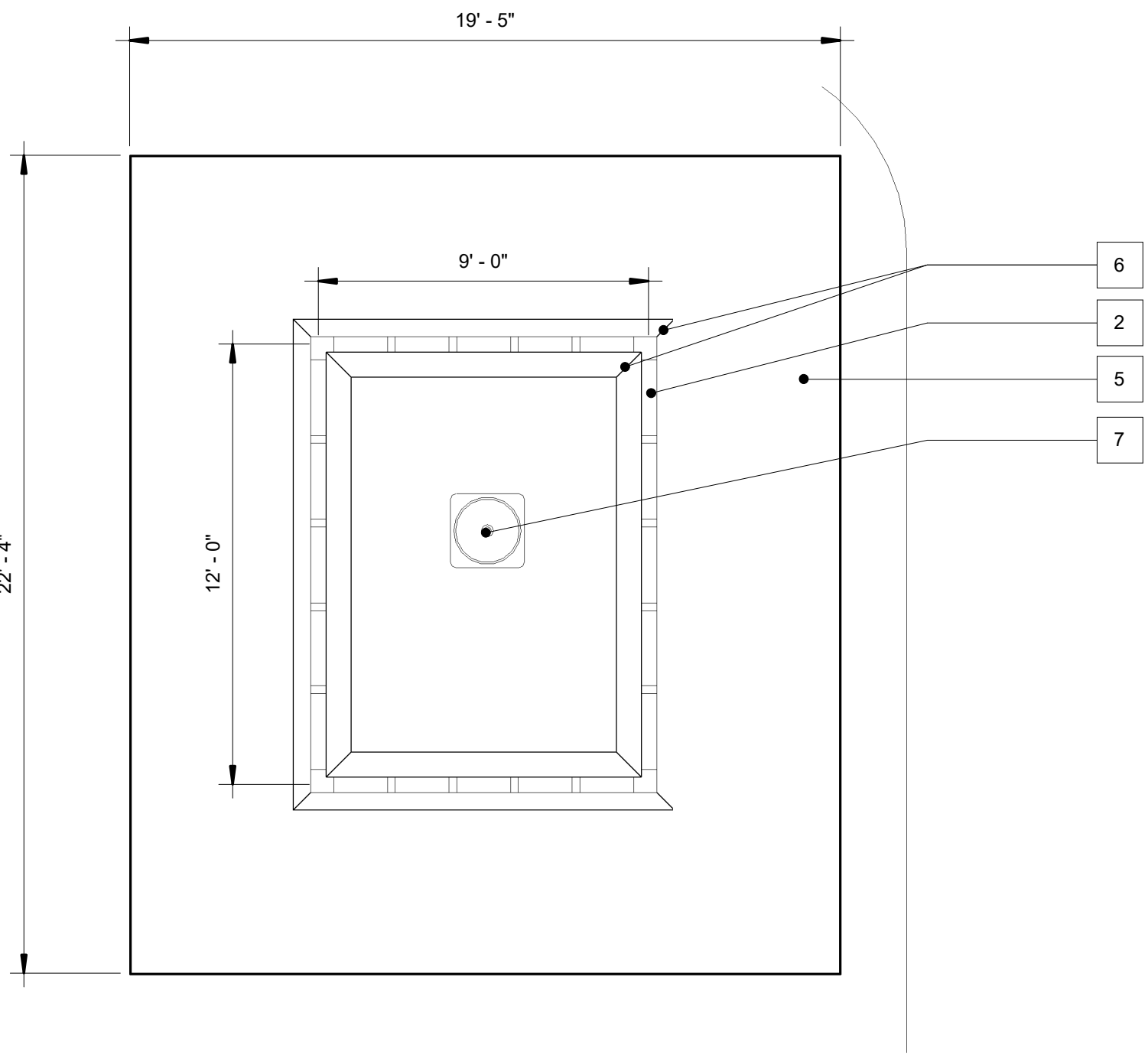
SECTION - EAST VIEW

Scale: 1/4" = 1'-0"



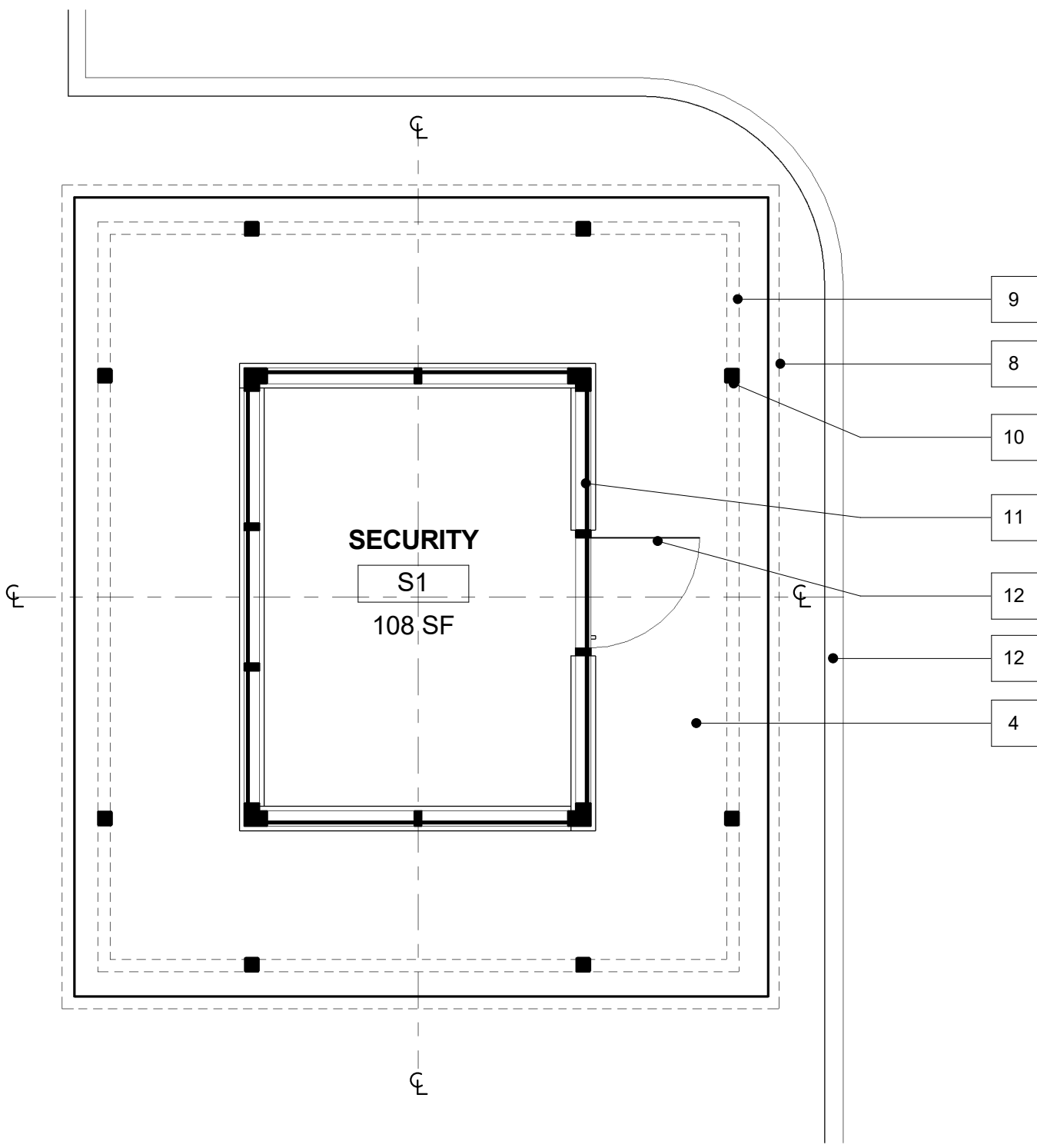
SECTION - NORTH VIEW

Scale: 1/4" = 1'-0"



ROOF PLAN

Scale: 1/4" = 1'-0"



FLOOR PLAN

Scale: 1/4" = 1'-0"

KEYNOTE #

1. ALUMINUM ENTRY DOOR WITH 1/4" SAFETY GLASS W/ P.6 SHADE COEFFICIENT. ANODIZED BRONZ DOOR STILES AND FRAME.
2. LOUVERED MECHANICAL EQUIPMENT SCREEN. ANNOIDIZED OR PAITED TO MATCH EXPOSED METAL FEATURES.
3. CONCRETE FOUNDATION.
4. CONCRETE FLOOR AND WALK SURFACE.
5. CONCRETE ROOF DECK WITH DIRECT ADHERED SINGLEPLY ROOF MEMBRANE
6. ROOF CURB
7. MECHANICAL EQUIPMENT, ROOF MOUNTED
8. OUTLINE OF ROOF ABOVE
9. OUTLINE OF ROOF TUBULAR STEEL SUPPORT BEAMS
10. 4X4 TUBULAR STEEL COLUMN, 8 TOTAL
11. 2X5 ALUMINUM STORE FRONT SYSTEM. ANODIZED BRONZE ALUMINUM FINISH. 3/4" TEMPERED INSULATED GLASS, WITH SHADE COEFFICIENT OF 0.6.
12. CURB EDGE OF ACCESS DRIVEWAY, SEE CIVIL.
13. SUN ANGLE, SUMMER



PIONEER GENERAL ENGINEERING CONSTRUTORS, INC

1251 S. Shamrock Ave.
Monrovia, CA
Tel: +1 626.358.2120
Fax: +1 626.358.5322
nick@pioneerbec.com

Owner: TRIDENT ADVISOR
Project Address: DESERT HOT SPRINGS CA

TRIDENT ADVISOR

CULTIVATION CENTER

PRELIMINARY

SECURITY POST

0-104