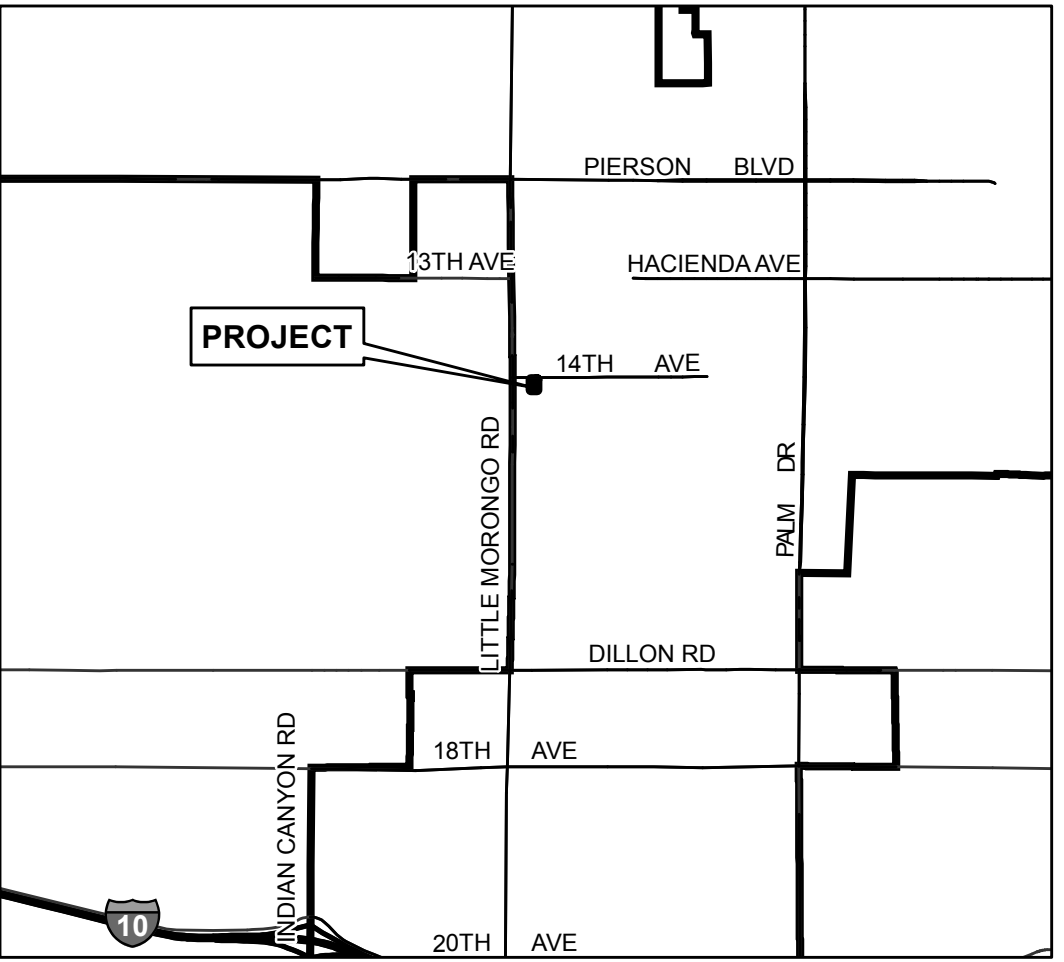
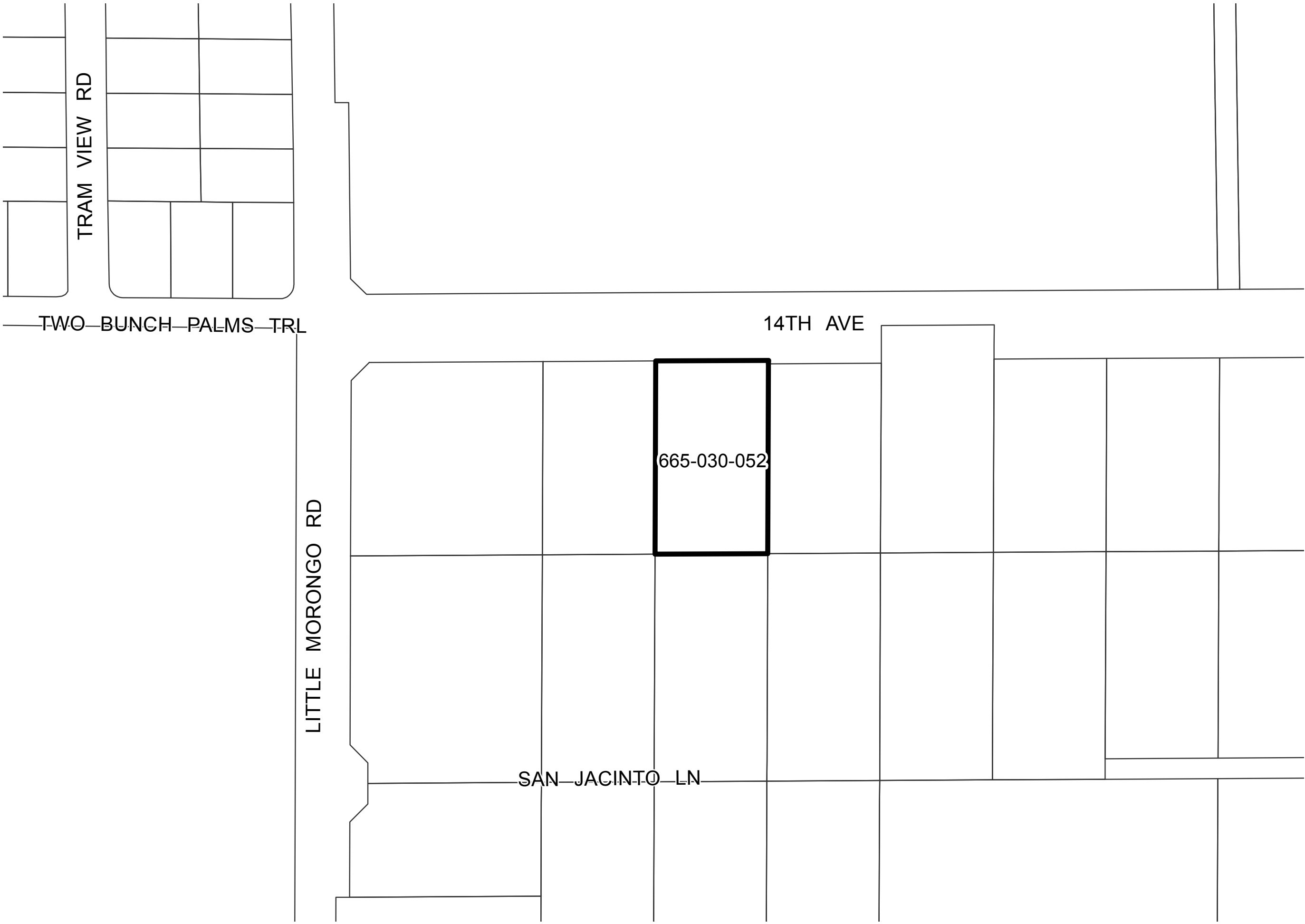


BOUNDARY MAP
SPECIAL PUBLIC SAFETY TAX AREA
ZONE 42 (LENWOOD HOSPITALITY CENTER, LLC)
CITY OF DESERT HOT SPRINGS

COUNTY OF RIVERSIDE, STATE OF CALIFORNIA
N²of NW⁴, SEC. 1, T.3S., R.4E.

LEGEND

- ZONE 42 BOUNDARY
- PARCEL LINES
- XXX-XXX-XXX ASSESSOR PARCEL NUMBER



VICINITY MAP
NOT TO SCALE

