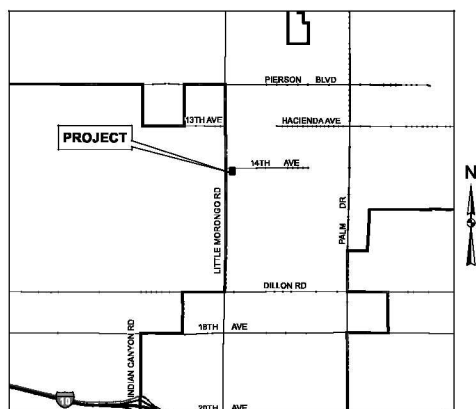
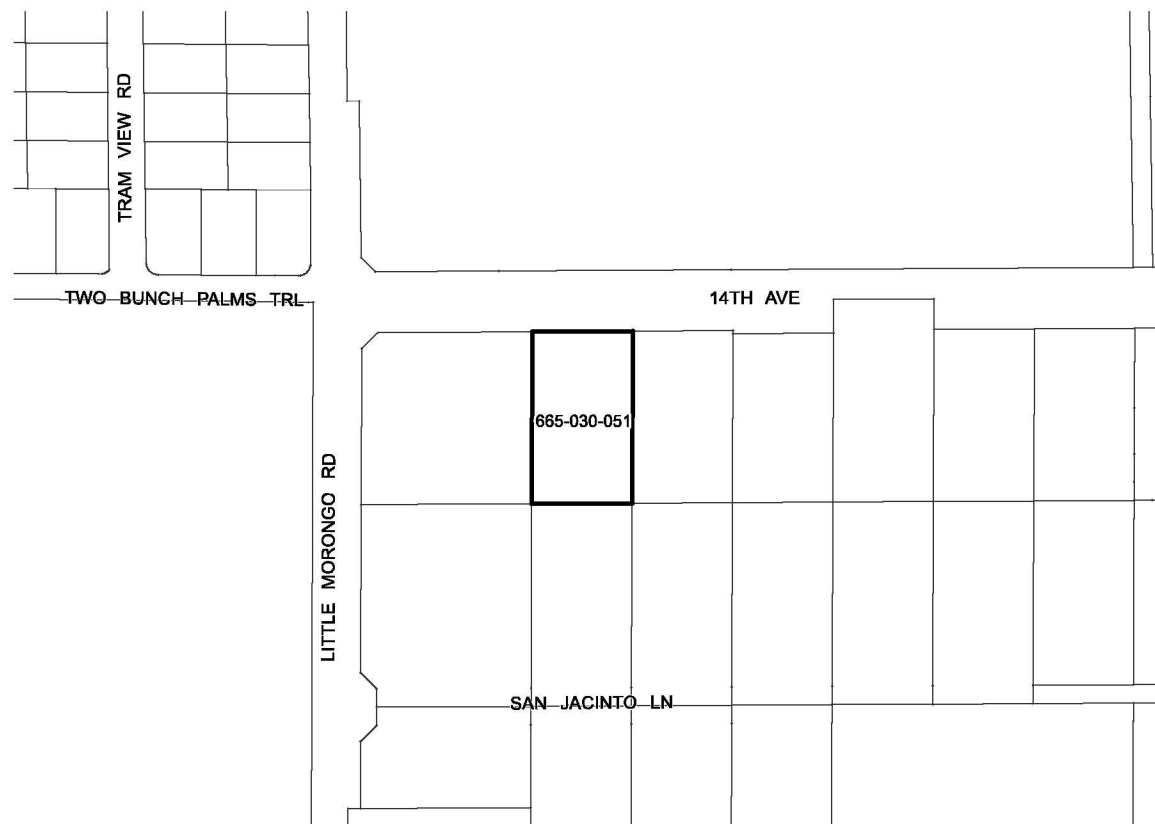


**BOUNDARY MAP**  
**SPECIAL PUBLIC SAFETY TAX AREA**  
**ZONE 41 (LENWOOD HOSPITALITY CENTER, LLC)**  
**CITY OF DESERT HOT SPRINGS**

**COUNTY OF RIVERSIDE, STATE OF CALIFORNIA**  
**N<sup>2</sup>of NW<sup>4</sup>, SEC. 1, T.3S., R.4E.**

**LEGEND**

- ZONE 41 BOUNDARY
- PARCEL LINES
- XXX-XXX-XXX ASSESSOR PARCEL NUMBER



**VICINITY MAP**  
**NOT TO SCALE**

ALBERT A.  
**WEBB**  
 ASSOCIATES  
 ENGINEERING CONSULTANTS

THIS BOUNDARY MAP CORRECTLY SHOWS THE BOUNDARIES OF ZONE 41 (LENWOOD HOSPITALITY CENTER, LLC). FOR DETAILS CONCERNING THE LINES AND DIMENSIONS OF LOTS OR PARCELS REFER TO THE COUNTY ASSESSOR'S MAPS FOR FISCAL YEAR 2018-2019.

