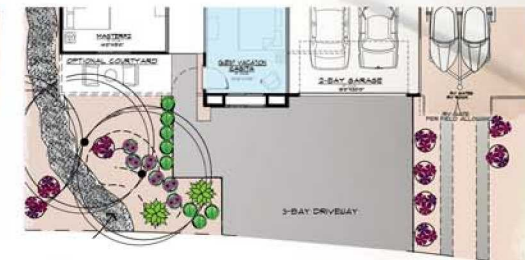


Mountain View at Rolling Hills
BY
MISSION LAKES 18 HOLE GOLF & COUNTRY CLUB
A PLANNED RESORT COMMUNITY

Plan 201G



	SMALL ACUTE PLANT MATERIAL & AQUARIUM PLANT - CACTUS PLANT	9 GAL	LOW 0-2
	SUN PLANT	9 GAL	LOW 0-2
	ALICE TOL & MEDICAL ALICE	9 GAL	LOW 0-2
	SUN SHINE	9 GAL	LOW 0-2
	TECHNOLOGICAL (GOLDEN) GOLDEN BARKED CACTUS	12 DIA 18H	LOW 0-2
	SUN		
	SOUNDGOLDIE		
	CARROT TOP COCAPIA - PROSTRATE / PROSTRATE MAXIMUM	1 GAL	MED 0-5
	SUN PLANT	1 GAL	MED 0-5
	DALIA CACTUS - "SERRA GOLD" / "SERRA GOLD DAZER	1 GAL	MED 0-5
	SUN PLANT	1 GAL	MED 0-5
	CACTUS MONTENEGRO / PURPLE LAVINIA	1 GAL	MED 0-5
	SUN PLANT	1 GAL	MED 0-5
	CACTUS MONTENEGRO - "NEW GOLD" / TRAILING CACTUS	1 GAL	MED 0-5

KICHLER

LED Accent Light 4.5W



4.5W, 120V, 30 Degree Beam, 4500K Cool White, 2000lm (at 100cm)

Beam Angle	Beam Diameter (cm)	Beam Diameter (in)	Beam Area (cm²)	Beam Area (in²)	Beam Area (sq ft)
30°	10.0	3.9	78.5	3.1	0.35
45°	14.1	5.6	157.1	6.2	0.71
60°	17.3	6.8	298.1	11.7	1.30
75°	21.5	8.5	467.5	18.3	2.05
90°	24.5	9.7	600.0	23.7	2.60
105°	27.2	10.7	739.2	29.0	3.25
120°	29.4	11.6	865.7	33.9	3.85

Technical Specifications:

- Power: 4.5W
- Voltage: 120V
- Beam Angle: 30°
- Beam Diameter: 10.0cm
- Beam Area: 78.5cm²
- Beam Area: 3.1in²
- Beam Area: 0.35sq ft

Notes:

- For more information, please visit www.kichler.com
- For more information, please visit www.kichler.com

KICHLER

LED Accent Light 4.5W



4.5W, 120V, 30 Degree Beam, 4500K Cool White, 2000lm (at 100cm)

Beam Angle	Beam Diameter (cm)	Beam Diameter (in)	Beam Area (cm²)	Beam Area (in²)	Beam Area (sq ft)
30°	10.0	3.9	78.5	3.1	0.35
45°	14.1	5.6	157.1	6.2	0.71
60°	17.3	6.8	298.1	11.7	1.30
75°	21.5	8.5	467.5	18.3	2.05
90°	24.5	9.7	600.0	23.7	2.60
105°	27.2	10.7	739.2	29.0	3.25
120°	29.4	11.6	865.7	33.9	3.85

Technical Specifications:

- Power: 4.5W
- Voltage: 120V
- Beam Angle: 30°
- Beam Diameter: 10.0cm
- Beam Area: 78.5cm²
- Beam Area: 3.1in²
- Beam Area: 0.35sq ft

Notes:

- For more information, please visit www.kichler.com
- For more information, please visit www.kichler.com

LED Accent Light 4.5W

Beam Angle	Beam Diameter (cm)	Beam Diameter (in)	Beam Area (cm²)	Beam Area (in²)	Beam Area (sq ft)
30°	10.0	3.9	78.5	3.1	0.35
45°	14.1	5.6	157.1	6.2	0.71
60°	17.3	6.8	298.1	11.7	1.30
75°	21.5	8.5	467.5	18.3	2.05
90°	24.5	9.7	600.0	23.7	2.60
105°	27.2	10.7	739.2	29.0	3.25
120°	29.4	11.6	865.7	33.9	3.85

Technical Specifications:

- Power: 4.5W
- Voltage: 120V
- Beam Angle: 30°
- Beam Diameter: 10.0cm
- Beam Area: 78.5cm²
- Beam Area: 3.1in²
- Beam Area: 0.35sq ft

Notes:

- For more information, please visit www.kichler.com
- For more information, please visit www.kichler.com

LED Accent Light 4.5W

Beam Angle	Beam Diameter (cm)	Beam Diameter (in)	Beam Area (cm²)	Beam Area (in²)	Beam Area (sq ft)
30°	10.0	3.9	78.5	3.1	0.35
45°	14.1	5.6	157.1	6.2	0.71
60°	17.3	6.8	298.1	11.7	1.30
75°	21.5	8.5	467.5	18.3	2.05
90°	24.5	9.7	600.0	23.7	2.60
105°	27.2	10.7	739.2	29.0	3.25
120°	29.4	11.6	865.7	33.9	3.85

Technical Specifications:

- Power: 4.5W
- Voltage: 120V
- Beam Angle: 30°
- Beam Diameter: 10.0cm
- Beam Area: 78.5cm²
- Beam Area: 3.1in²
- Beam Area: 0.35sq ft

Notes:

- For more information, please visit www.kichler.com
- For more information, please visit www.kichler.com

TYPICAL STANDARD
(IRRIGATION)