

Riverside County Fire Department/ CAL FIRE

Emergency Incident Statistics



John R. Hawkins

Fire Chief

7/20/2016

Report Provided By: Riverside County Fire Department

Communications and Technology Division

GIS Section

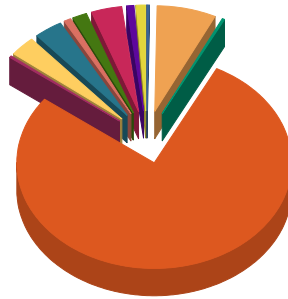
Please refer to Map and Incident by Battalion, Station, Jurisdiction

Incidents Reported for the month of June, 2016 and Desert Hot Springs City

*Incidents are shown based on the primary response area for the incident location. This does not represent total response times for all units only the first unit in.

Response Activity

Incidents Reported for the month of June,2016 and Desert Hot Springs City



Com Fire	1	0.2%
False Alarm	29	7.1%
Haz Mat	1	0.2%
Medical	317	77.7%
Multi-Fam Dwelling Fire	1	0.2%
Other Fire	13	3.2%
Public Service Assist	13	3.2%
Res Fire	4	1.0%
Standby	6	1.5%
Traffic Collision	15	3.7%
Vehicle Fire	4	1.0%
Wildland Fire	4	1.0%
Total:	408	100.0%

Com Fire	1
False Alarm	29
Haz Mat	1
Medical	317
Multi-Fam Dwelling Fire	1
Other Fire	13
Public Service Assist	13
Res Fire	4
Standby	6
Traffic Collision	15
Vehicle Fire	4
Wildland Fire	4
Incident Total:	408

Average Enroute to Onscene Time*

Enroute Time = When a unit has been acknowledged as responding. Onscene Time = When a unit has been acknowledge as being on scene. For any other statistic outside Enroute to Onscene please contact the IT Help Desk at 951-940-6900

<5 Minutes	+5 Minutes	+10 Minutes	+20 Minutes	Average	% 0 to 5 min
311	71	6	0	3.6	80.2%

The following incidents are included in the total number of records but not in the average time HZM, HZMMC, OAC, OAF, OAM, OAMAD, OAMAI, OAMTE, OAMVA, OAP, OAR, OAV, OUT, OOU, LEB, LEO, LEI, BRNPMT, OES, PAA, PAD, PAF, PAO, PAP, HFS, HFSAM, HFSCA, HSBT, HSBTC, HSBTS, HSBTV, HSE, HSG

Incidents by Battalion, Station and Jurisdiction

			Com Fire	False Alarm	Haz Mat	Medical	Multi-Fa m	Other Fire	Public Service	Res Fire	Standby	Traffic Collisio	Vehicle Fire	Wildlan d Fire	Total
Battalion 10	Station 35 Thousand Palms	Desert Hot Springs	0	1	0	0	0	0	0	0	0	0	0	0	1
		Station Total	0	1	0	0	0	0	0	0	0	0	0	0	1
	Station 36 North Palm Springs	Desert Hot Springs	0	2	0	10	0	1	0	0	0	2	0	1	16
		Station Total	0	2	0	10	0	1	0	0	0	2	0	1	16
	Station 37 Desert Hot Springs	Desert Hot Springs	1	26	1	307	1	12	13	4	6	13	4	3	391
		Station Total	1	26	1	307	1	12	13	4	6	13	4	3	391
	Battalion Total			1	29	1	317	1	13	13	4	6	15	4	4
Grand Total			1	29	1	317	1	13	13	4	6	15	4	4	408

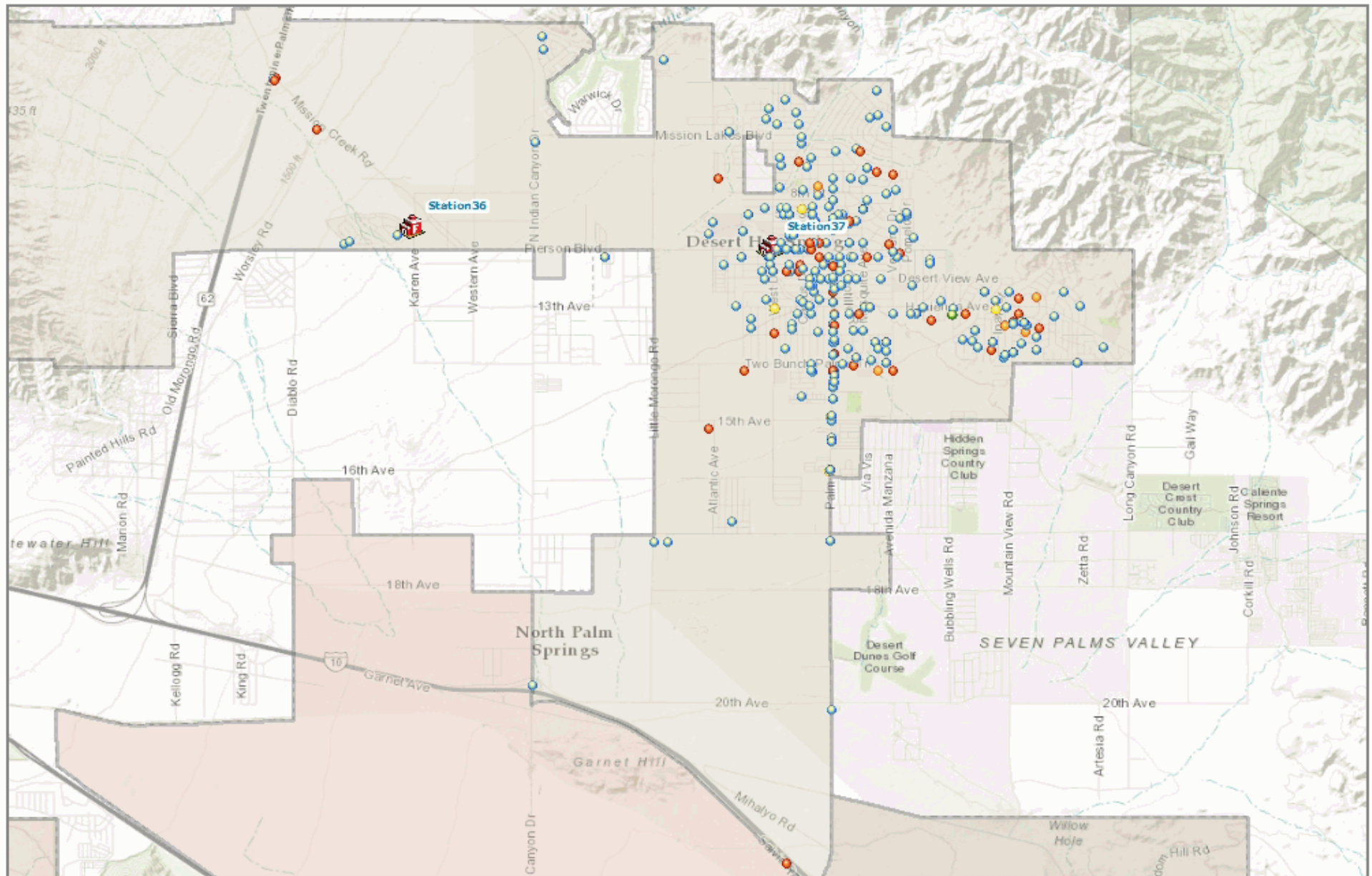
Incidents by Jurisdiction

	Com Fire	False Alarm	Haz Mat	Medical	Multi-Fa m	Other Fire	Public Service	Res Fire	Standby	Traffic Collision	Vehicle Fire	Wildland Fire	Total
Desert Hot Springs	1	29	1	317	1	13	13	4	6	15	4	4	408
Grand Total	1	29	1	317	1	13	13	4	6	15	4	4	408

Incidents by Supervisorial District - Summary

	DISTRICT 4 JOHN BENOIT	Grand Total
Com Fire	1	1
False Alarm	29	29
Haz Mat	1	1
Medical	317	317
Multi-Fam Dwelling Fire	1	1
Other Fire	13	13
Public Service Assist	13	13
Res Fire	4	4
Standby	6	6
Traffic Collision	15	15
Vehicle Fire	4	4
Wildland Fire	4	4
Total	408	408

MONTH = 6 and YEAR = 2016 and CITYNAME = 'Desert Hot Springs'



Legend

- Fire
- Haz Mat
- Medical
- Other Misc
- Public Service Assists
- Hazard
- Riverside County
- Reservations
- Fire Station
- Casinos



Riverside County Fire GIS