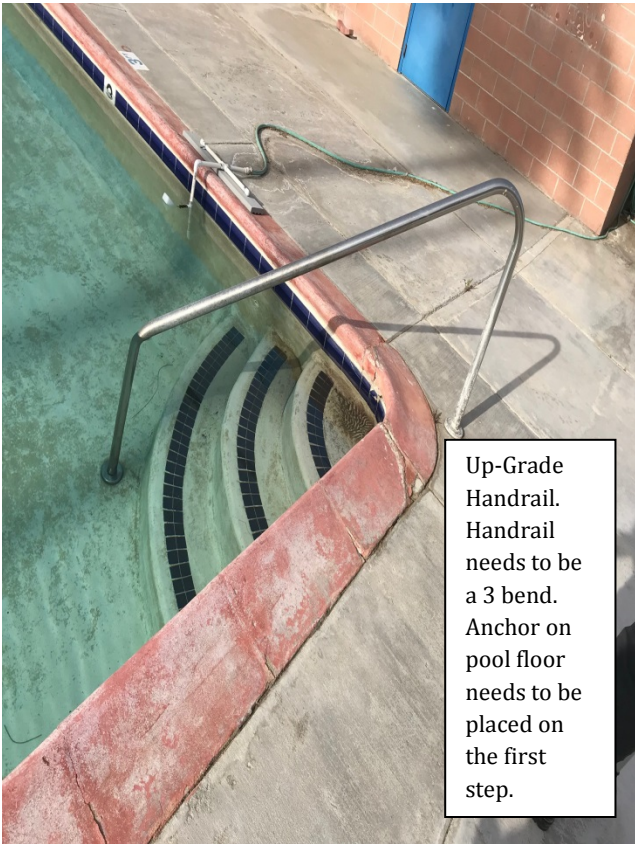
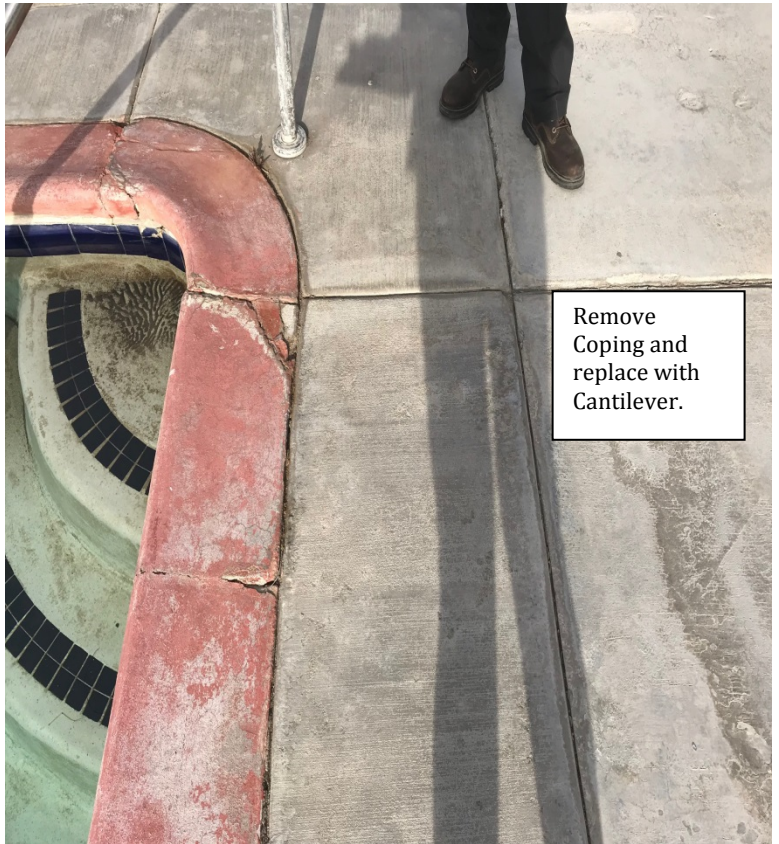


Wardman Park Pool





Up-Grade Handrail. Handrail needs to be a 3 bend. Anchor on pool floor needs to be placed on the first step.

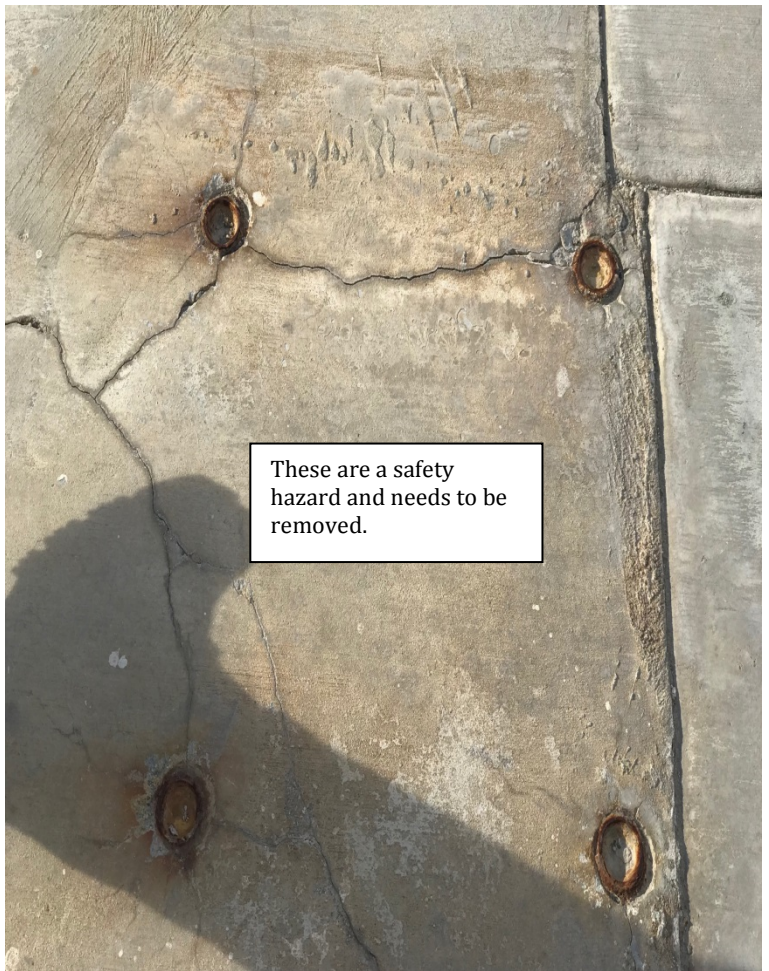


Remove Coping and replace with Cantilever.



Fix joint lines, replace the entire section and make sure joint lines are straight

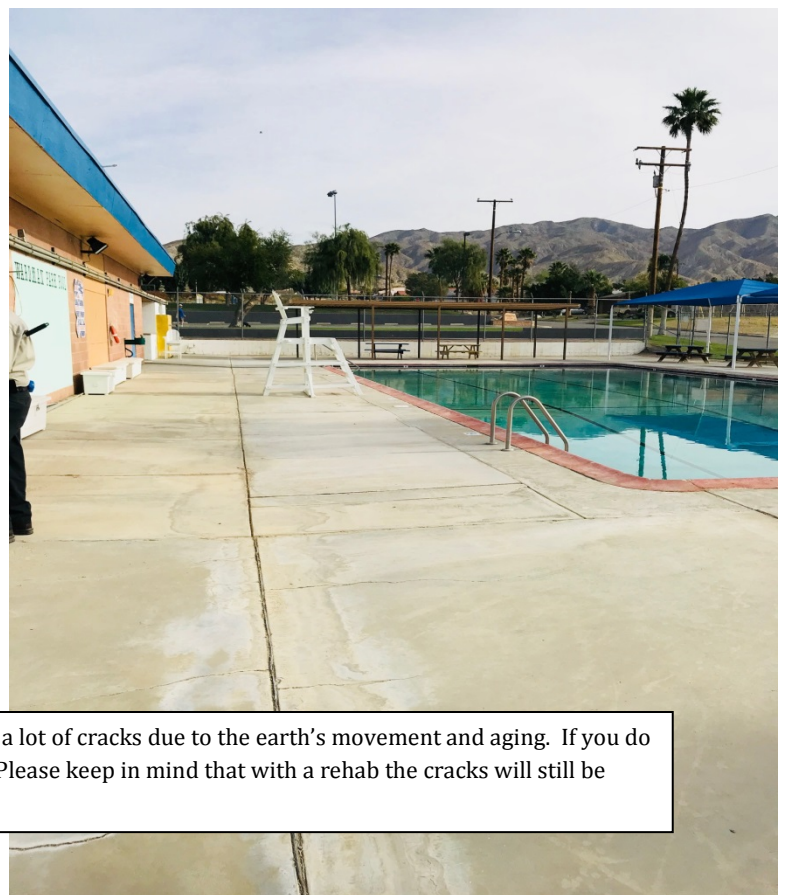
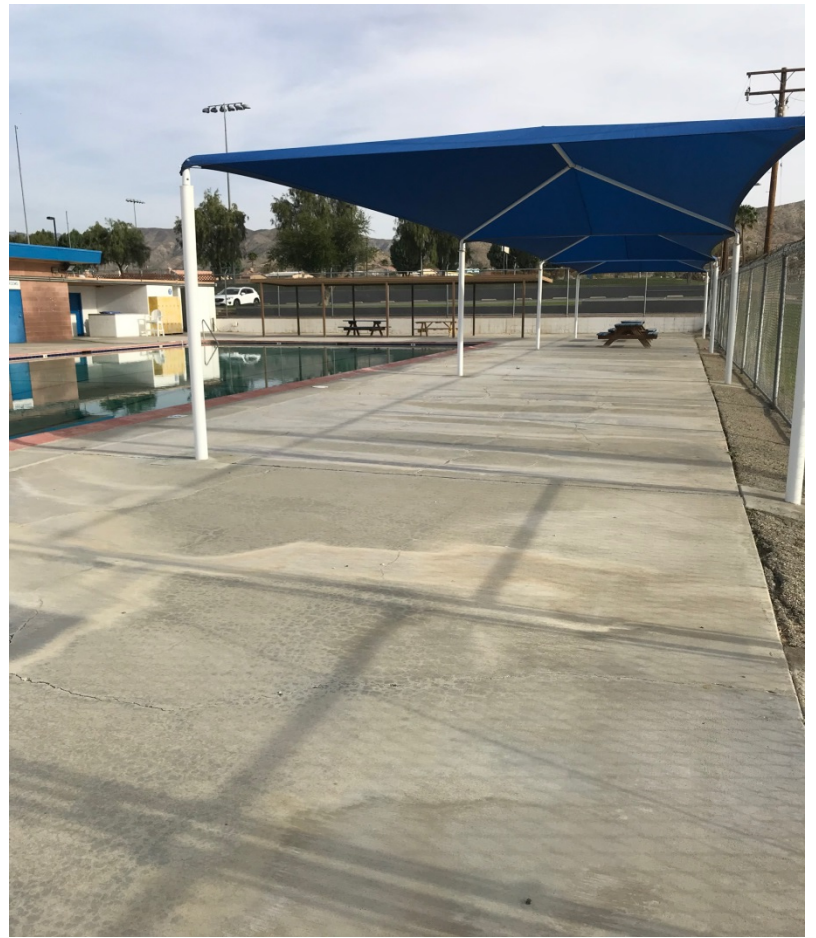
New Depth / No Diving markers need to be placed on Deck.



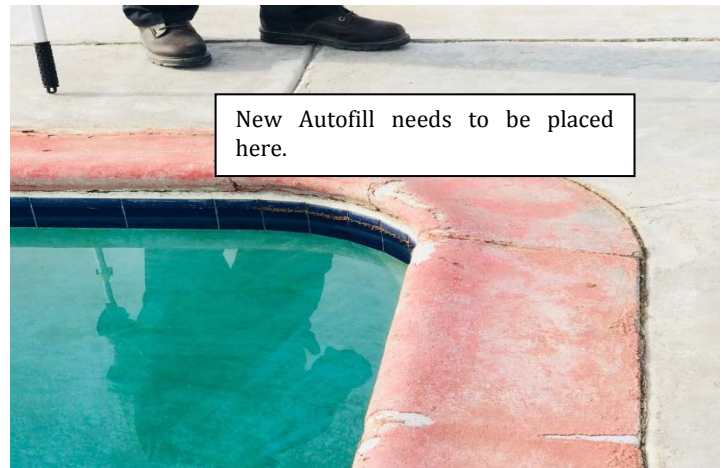
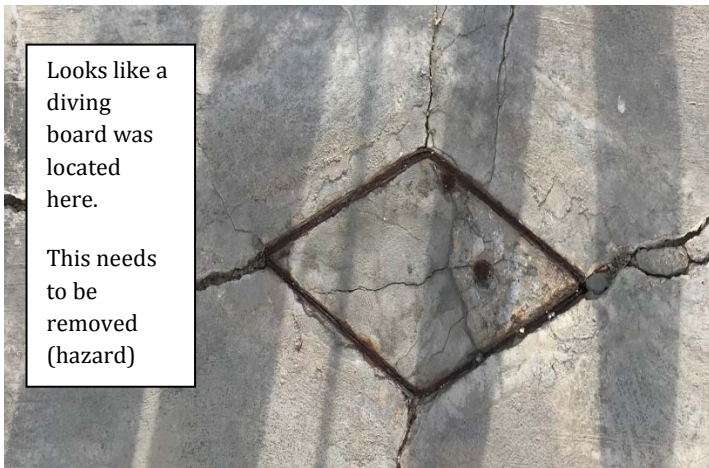
These are a safety hazard and needs to be removed.



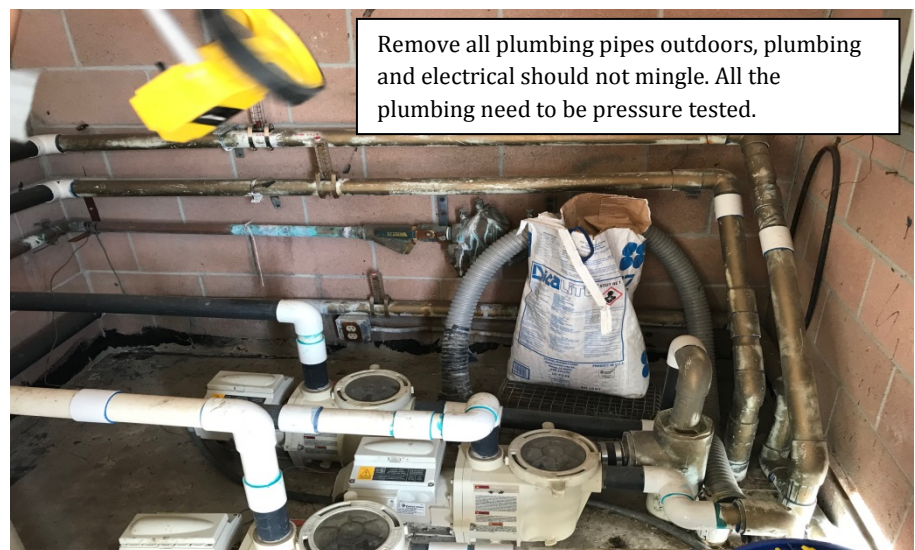
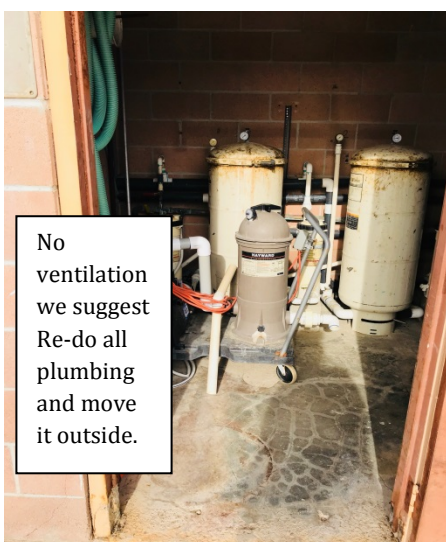
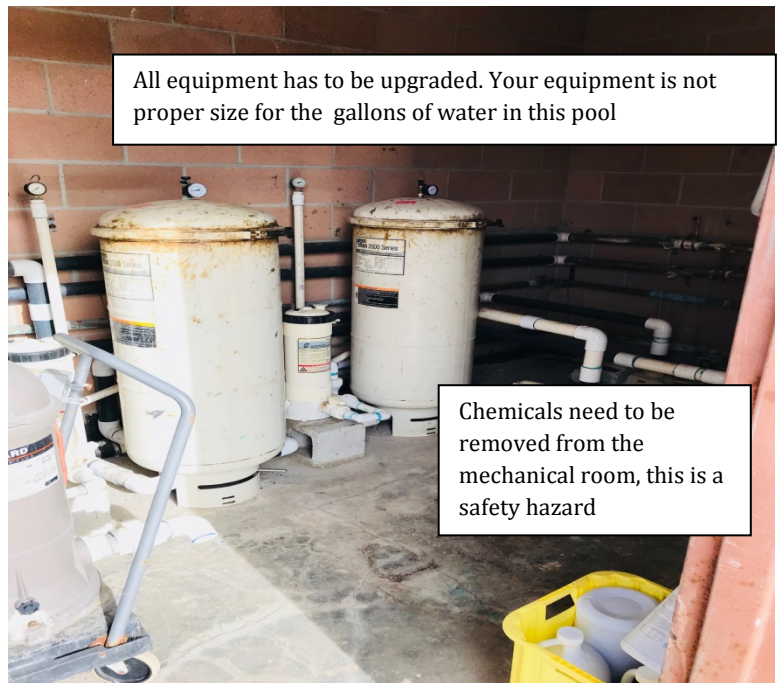
Double handrails need to be placed here as well.



Remove and replace all concrete. The deck has a lot of cracks due to the earth's movement and aging. If you do not to replace the deck we can rehab the area. Please keep in mind that with a rehab the cracks will still be visible.



Equipment Area





Suggest relocating all equipment to this area. Place more concrete slab for equipment.

All equipment plumbing will be moved here and underground.



Suggest relocating of storage container to a different location, J- Boxes exposed here

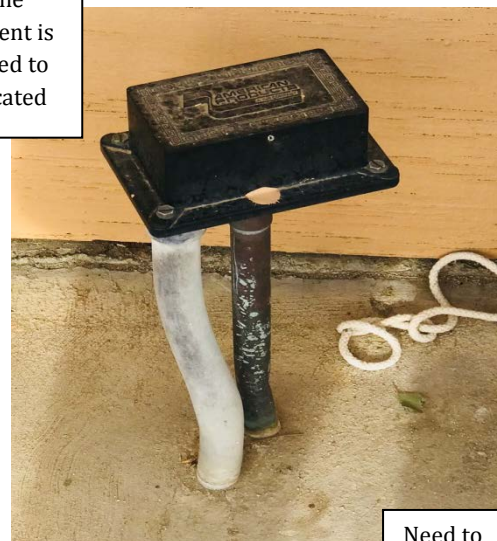




All skimmers will need to be replaced



Place all J-Boxes to the back area where the equipment is suggested to be relocated



Need to know where this drains to (looks as though it may drain to the street).

