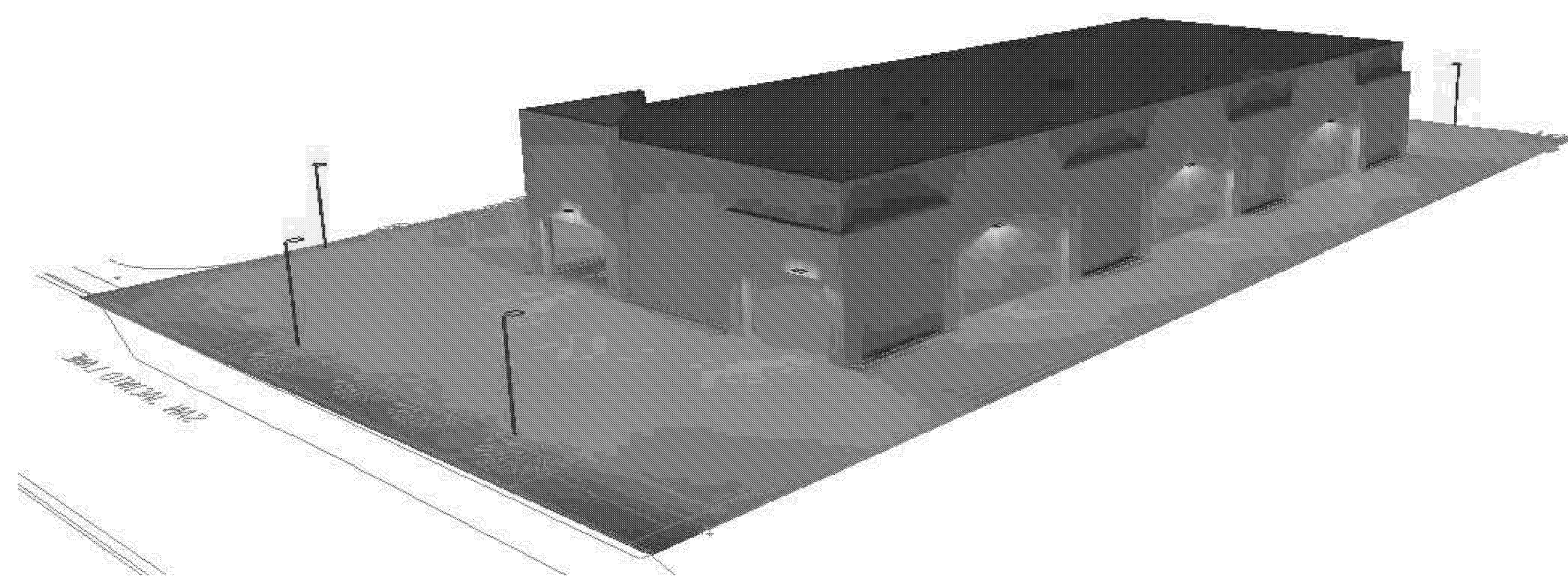


SCALE:	2
1"=20'-0"	

[illegible]

FIXTURE TYPE 'A'
MOUNT @ 18'

VIPER S SERIES

SMALL VIBRATOR LUMINAIRE

Cat.#	Job	Type
-------	-----	------

SPECIFICATIONS

Intended Use

The Beacon VIPer Luminaire is available with a wide choice of different LED lighting configurations and optical distributions designed to replace HD sprays such as AQM 3M or 4M.

Construction

- Manufactured with cast aluminum.
- Constructed of polycarbonate film that meets ASTM D1735 corrosion test requirements.
- Meets ASTM D1735 adhesion and impact test requirements.
- Coatings are corrosion resistant.
- One piece optical distribution system consisting of LED arrays, LED driver, optics, gasket and stainless steel frame.
- Designed to hold together with internal bracing standards supplied in the board to hold it flat and prevent expansion as the one piece optical system.
- Two piece stainless and micro-bubble polycarbonate frame joined using a weather proof seal around each individual LED.

Electrical

- 120V through 277V, 50 Hz to 60 Hz LANA, or 347V or 480V AC.
- Power factor is 0.95 or full load.
- Dimming drivers are standard, but must connect before to prevent wiring back to provide for external dimming controls.
- Component to component wiring within the luminaire carry up to max 80% of rated load and are perfectly OK for use at 100% load and 100% or higher.
- These luminaires are certified by UL for use with DALI and 0-10V dimming controls. UL listing also applies to DALI only.
- UL listing also covers the luminaire board and LED driver components and can be provided as a single unit or separated board for AC power connections.
- The luminaire is designed for an optional wet lock photo control receptacle.
- Two footcandle is designed for DALI to 40°C / 104°F
- Single pinpoint: 200 ft x 200 ft x 2013 inch power (over 2000 watts). Compatible with ANSI C13.1 external wiring and control devices.

- Guardrail®** - protects luminaires from excessive temperature. The device will shut down at a specific, lower ambient temperature, and progressively reduce power over a wide temperature range. Operation will be smooth and undisturbable to the eye. Thermal circuit is designed to "fail up" allowing the luminaire to revert to full power in the event of an interruption or to power supply, or faulty wiring connection to the drivers. The device will be able to reconnect with the 0-10V control device bypassing sensors, external dimmers, etc.

Controls/Options

- Available with an optional passive infrared (PIR) motion sensor capable of detecting

motion 360° around the luminaire. When no motion is detected for the specified time, the Motion Response system reduces the luminaire to factory preset level, reducing the light level incrementally. When motion is detected by the PIR sensor, the luminaire returns to full wattage and full light output. Available with optional PIR control if project requirements vary from standard configuration. Available with Energy for Optical use, allowing small arrays with no motion or in a single dimming board or in two (2) single dimming boards for motion control.

- Or, driver board can be specified with **SafetyNet™** wireless control system for reduction in energy and maintenance cost while controlling light quality 24/7.
- For further information or visit www.beaconlighting.com/products for more information.

Installation

- Mounting options for horizontal and vertical front or traditional air mounting available. Hardware included.

Finish

- IP-65 polyester powder coat electro statically applied and fluorocarbon.
- IP-67 front consists of a clear polycarbonate region with a polymer armor strip and top coated with a thermoplastic polyester powder coat finish.
- The front finish is an AIA A925 performance specification which includes passing a 3000 hour salt water test for corrosion resistance and meets testing for color retention per ASTM D2240 and meets impact impacts of up to 100 mph pounds.

Listings

- Designs Group (DGL) qualified, "Official LED Luminaire Manufacturer" www.designlighting.com
- UL listed, ETL, IES and CSA C22.2 No.28.0
- UL approved
- The product is approved by the Canada Fire and Wildlife Commission, separate available at www.beaconlighting.com/canada-fire-wildlife

Warranty

- For a full year warranty visit our website at www.beaconlighting.com/beaconwarranty

PRODUCT IMAGES

Technical drawings of the Beacon VIPer S luminaire. The top drawing shows the front view with dimensions: 22 5/8" (578 mm) for the main body, 16 1/2" (417 mm) for the side section, and 11 3/4" (298 mm) for the bottom section. The weight is 67 lb (30.8 kg). The bottom drawing shows the mounting options: Side View, Back View, and End View. The side view shows a 1/4" (6.35 mm) thick plate. The back view shows a 1/4" (6.35 mm) thick plate. The end view shows a 1/4" (6.35 mm) thick plate. The bottom drawing also shows a 22 5/8" (578 mm) dimension for the main body, a 16 1/2" (417 mm) dimension for the side section, and a 11 3/4" (298 mm) dimension for the bottom section. The weight is 67 lb (30.8 kg). The bottom drawing also shows a 1/4" (6.35 mm) thick plate. The bottom drawing also shows a 1/4" (6.35 mm) thick plate. The bottom drawing also shows a 1/4" (6.35 mm) thick plate.

CERTIFICATIONS/LISTINGS

Model: VIPER S-01-01-01-01-01

Beacon Products, 13401 Southview Avenue East, Bradenton, FL 34203 • Phone: 800-336-4820
www.beaconlighting.com • Fax: 941-761-1111 • Email: sales@beaconlighting.com
 © 2015 BEACON PRODUCTS. All Rights Reserved. For more information visit our website www.beaconlighting.com • Printed in USA OCTOBER 10, 2015 933.8 A

FIXTURE TYPE 'B'
MOUNT @ 15'

[illegible]

DATE: NOVEMBER 27, 2017

DRAWN BY: GL

CHECKED BY: FR

PROJECT NO.: 17157

DRAWING TITLE:

PHOTOMETRIC

SITE PLAN

SHEET NO.: _____

E1.0

SCALE:	1
NTS	

FIXTURE CUT SHEETS

DATE: NOVEMBER 27, 2017

DRAWN BY: GL

CHECKED BY: FR

PROJECT NO.: 17157

DRAWING TITLE:

PHOTOMETRIC

SITE PLAN

SHEET NO.: _____