

Copy 81/88

ANNEXATION MAP NO. 26
COMMUNITY FACILITIES DISTRICT NO. 2010-1 (SERVICES)
CITY OF DESERT HOT SPRINGS
COUNTY OF RIVERSIDE, STATE OF CALIFORNIA


THIS MAP SHOWS THE BOUNDARIES OF AREAS TO BE ANNEXED TO COMMUNITY FACILITIES DISTRICT NO. 2010-1 (SERVICES) OF THE CITY OF DESERT HOT SPRINGS, COUNTY OF RIVERSIDE, STATE OF CALIFORNIA. THE BOUNDARIES OF WHICH COMMUNITY FACILITIES DISTRICT ARE SHOWN AND DESCRIBED ON THE MAP THEREOF WHICH WAS PREVIOUSLY RECORDED ON JUNE 8, 2010, IN BOOK 74 OF MAPS OF ASSESSMENT AND COMMUNITY FACILITIES DISTRICTS AT PAGE 81 AND AS INSTRUMENT NO. 2010-0263725, IN THE OFFICE OF THE COUNTY RECORDER OF THE COUNTY OF RIVERSIDE, STATE OF CALIFORNIA.

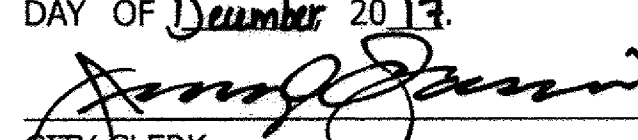
I HEREBY CERTIFY THAT THE WITHIN MAP OR AREAS TO BE ANNEXED TO COMMUNITY FACILITIES DISTRICT NO. 2010-1 (SERVICES) OF THE CITY OF DESERT HOT SPRINGS, COUNTY OF RIVERSIDE, STATE OF CALIFORNIA, WAS APPROVED BY THE CITY COUNCIL OF THE CITY OF DESERT HOT SPRINGS AT A REGULAR MEETING THEREOF, HELD ON THE 5th DAY OF December, 2017, BY ITS RESOLUTION NO. 2017-117.

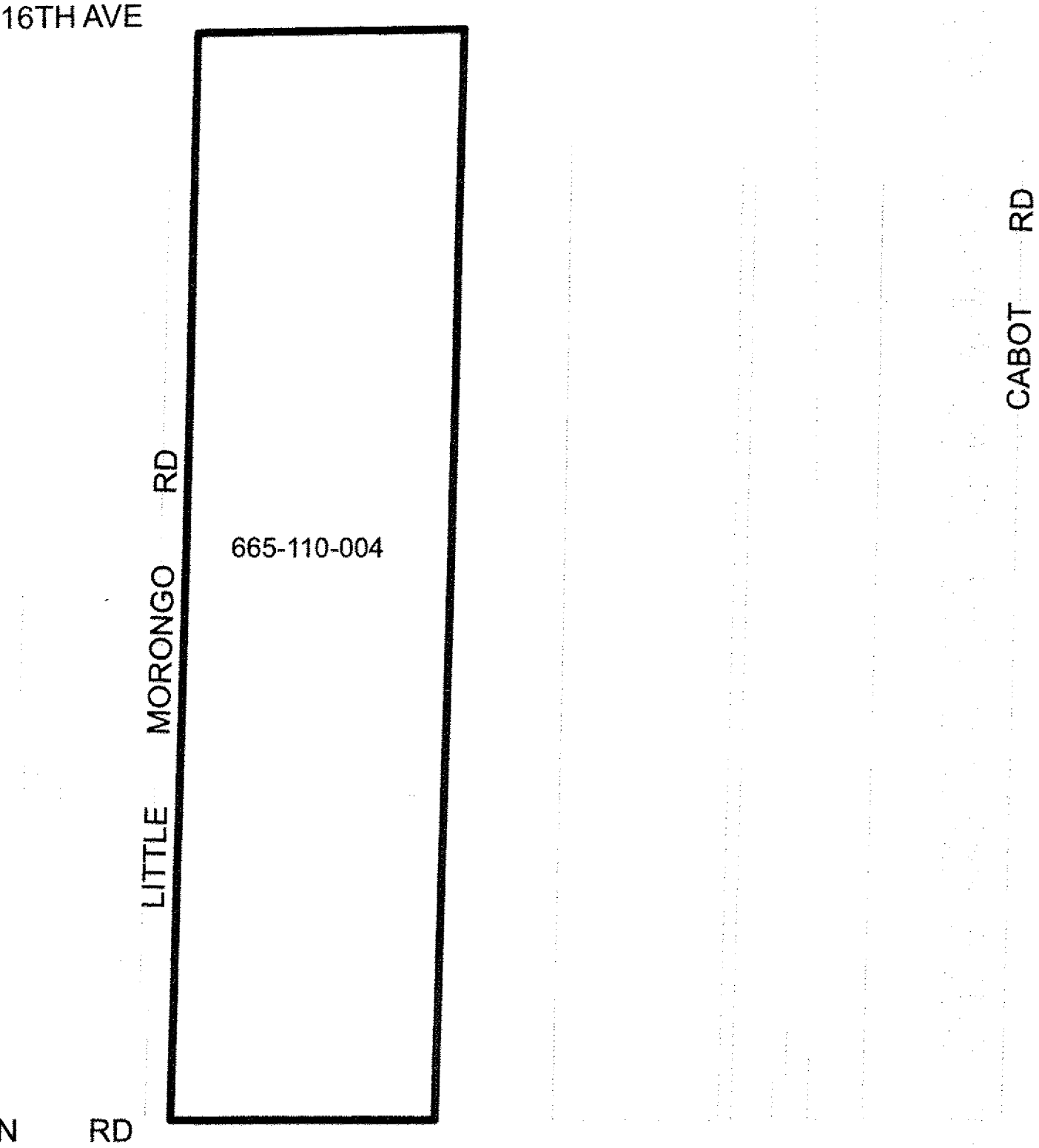

CITY CLERK
CITY OF DESERT HOT SPRINGS

RECORDED THIS 19th DAY OF December 2017, AT THE HOUR OF 4:58 O'CLOCK P.M., IN IN BOOK 81 PAGE 88 OF MAPS OF ASSESSMENT AND COMMUNITY FACILITIES DISTRICTS IN THE OFFICE OF THE COUNTY RECORDER, IN THE COUNTY OF RIVERSIDE, STATE OF CALIFORNIA.

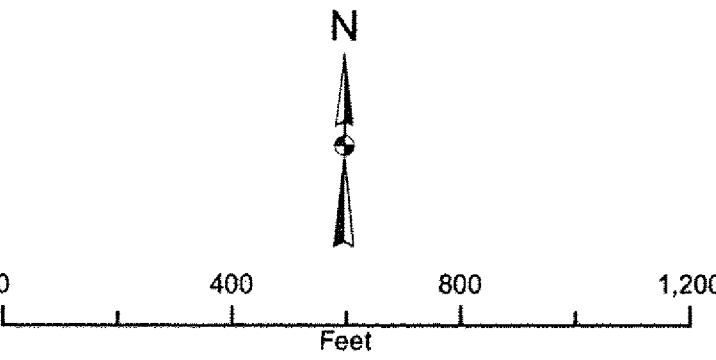
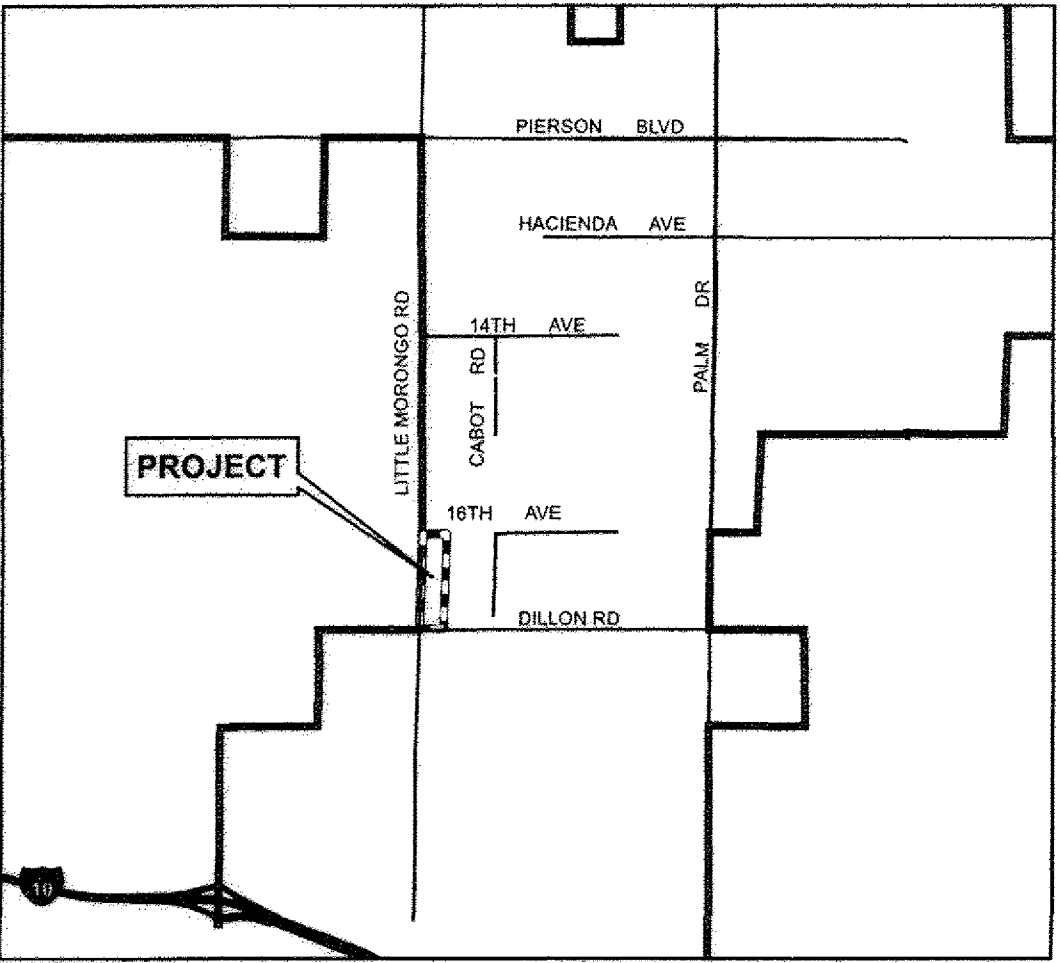
FEE: \$10.00 NO.: 2017-0532202
PETER ALDANA, ASSESSOR, COUNTY CLERK, RECORDER



BY: 
DEPUTY

FILED IN THE OFFICE OF THE CITY CLERK, CITY OF DESERT HOT SPRINGS, THIS 5th DAY OF December 2017.

CITY CLERK
CITY OF DESERT HOT SPRINGS



VICINITY MAP
NOT TO SCALE



| LEGEND | |
|---|------------------------|
|  | CFD BOUNDARY |
|  | PARCEL LINE |
| XXX-XXX-XXX | ASSESSOR PARCEL NUMBER |

ALBERT A.
WEBB
ASSOCIATES
ENGINEERING CONSULTANTS

THIS ANNEXATION MAP CORRECTLY SHOWS THE LOT OR PARCEL OF LAND INCLUDED WITHIN THE BOUNDARIES OF THE COMMUNITY FACILITIES DISTRICT. FOR DETAILS CONCERNING THE LINES AND DIMENSIONS OF LOTS OR PARCELS REFER TO THE COUNTY ASSESSOR'S MAPS FOR FISCAL YEAR 2017-2018.