

# ANNEXATION MAP NO. 22

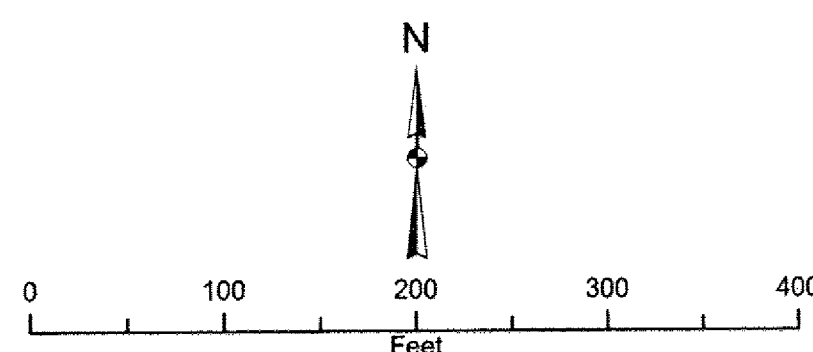
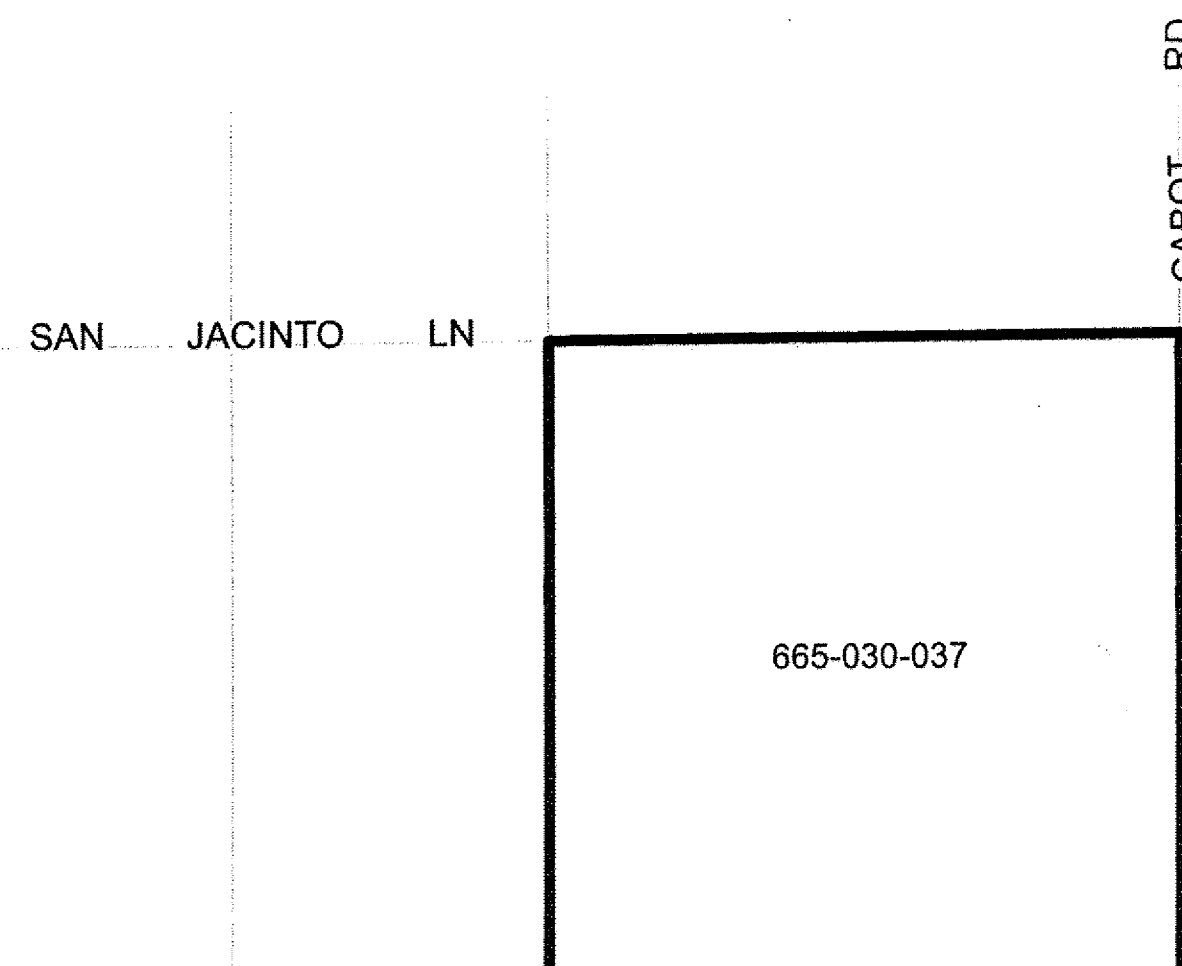
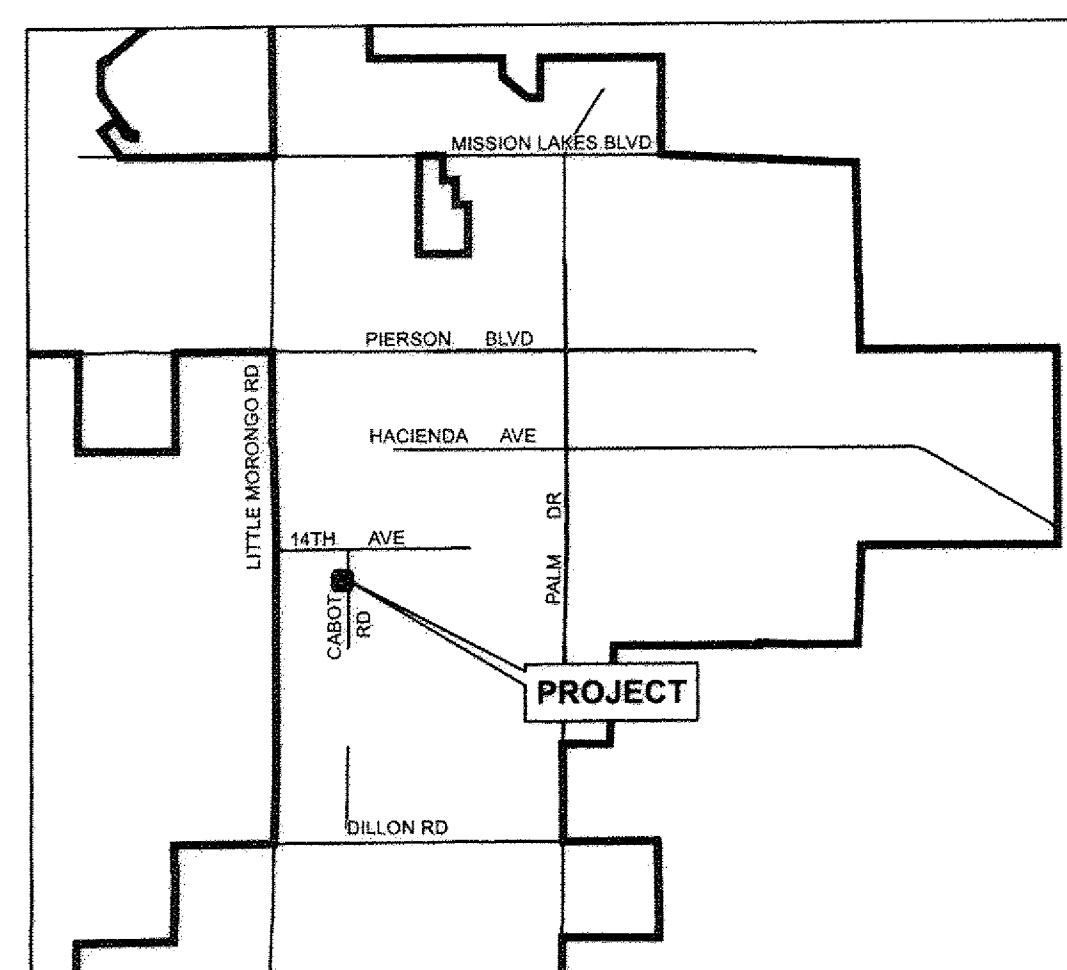
## COMMUNITY FACILITIES DISTRICT NO. 2010-1 (SERVICES) CITY OF DESERT HOT SPRINGS COUNTY OF RIVERSIDE, STATE OF CALIFORNIA

THIS MAP SHOWS THE BOUNDARIES OF AREAS TO BE ANNEXED TO COMMUNITY FACILITIES DISTRICT NO. 2010-1 (SERVICES) OF THE CITY OF DESERT HOT SPRINGS, COUNTY OF RIVERSIDE, STATE OF CALIFORNIA. THE BOUNDARIES OF WHICH COMMUNITY FACILITIES DISTRICT ARE SHOWN AND DESCRIBED ON THE MAP THEREOF WHICH WAS PREVIOUSLY RECORDED ON JUNE 8, 2010, IN BOOK 74 OF MAPS OF ASSESSMENT AND COMMUNITY FACILITIES DISTRICTS AT PAGE 81 AND AS INSTRUMENT NO. 2010-0263725, IN THE OFFICE OF THE COUNTY RECORDER OF THE COUNTY OF RIVERSIDE, STATE OF CALIFORNIA.

I HEREBY CERTIFY THAT THE WITHIN MAP OR AREAS TO BE ANNEXED TO COMMUNITY FACILITIES DISTRICT NO. 2010-1 (SERVICES) OF THE CITY OF DESERT HOT SPRINGS, COUNTY OF RIVERSIDE, STATE OF CALIFORNIA, WAS APPROVED BY THE CITY COUNCIL OF THE CITY OF DESERT HOT SPRINGS AT A REGULAR MEETING THEREOF, HELD ON THE 5<sup>th</sup> DAY OF December, 2017, BY ITS RESOLUTION NO. 2017-120.

*[Signature]*  
CITY CLERK  
CITY OF DESERT HOT SPRINGS

### VICINITY MAP NOT TO SCALE



### LEGEND

- CFD BOUNDARY
- PARCEL LINE
- ASSESSOR PARCEL NUMBER

RECORDED THIS 19<sup>th</sup> DAY OF December, 2017, AT THE HOUR OF 1:58 O'CLOCK P.M., IN IN BOOK 81 PAGE 86 OF MAPS OF ASSESSMENT AND COMMUNITY FACILITIES DISTRICTS IN THE OFFICE OF THE COUNTY RECORDER, IN THE COUNTY OF RIVERSIDE, STATE OF CALIFORNIA.

FEE: \$10.00 NO.: 2017-0632200  
PETER ALDANA, ASSESSOR, COUNTY CLERK, RECORDER

BY: *[Signature]*  
DEPUTY

FILED IN THE OFFICE OF THE CITY CLERK, CITY OF DESERT HOT SPRINGS, THIS 5<sup>th</sup> DAY OF December, 2017.

*[Signature]*  
CITY CLERK  
CITY OF DESERT HOT SPRINGS