

## Riverside County Fire Department/ CAL FIRE

### Emergency Incident Statistics



John R. Hawkins

Fire Chief

12/6/2017

Report Provided By: Riverside County Fire Department

Communications and Technology Division

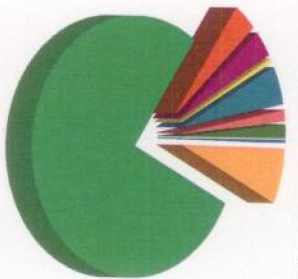
GIS Section

Please refer to Map and Incident by Battalion, Station, Jurisdiction

Incidents Reported for the month of November, 2017 and Desert Hot Springs City  
\*Incidents are shown based on the primary response area for the incident location. This does not represent total response times for all units only the first unit in.

## Response Activity

### Incidents Reported for the month of November, 2017 and Desert Hot Springs City



Com Fire	1	0.3%
False Alarm	24	6.5%
Medical	288	77.9%
Other Fire	13	3.5%
Public Service Assist	12	3.3%
Standby	2	0.5%
Traffic Collision	18	4.9%
Vehicle Fire	5	1.4%
Wildland Fire	6	1.6%
<b>Total:</b>	<b>367</b>	<b>100.0%</b>

Com Fire  
False Alarm  
Medical  
Other Fire  
Public Service Assist  
Standby  
Traffic Collision  
Vehicle Fire  
Wildland Fire

#### Incident Total:

367

#### Average Enroute to Onscene Time\*

Enroute Time = When a unit has been acknowledged as responding. Onscene Time = When a unit has been acknowledge as being on scene. For any other statistic outside Enroute to Onscene please contact the IT Help Desk at 951-940-6900

<5 Minutes	+5 Minutes	+10 Minutes	+20 Minutes	Average	% 0 to 5 min
271	74	11	1	4.0	75.9%

The following incidents are included in the total number of records but not in the average time HZM, HZMMC, OAC, OAF, OAM, OAMAD, OAMAI, OAMTE, OAMVA, OAP, OAR, OAV, OUT, OOU, LEB, LEO, LEI, BRNPMT, OES, PAA, PAD, PAF, PAO, PAP, HFS, HFSAM, HFSCA, HSBT, HSBTC, HSBTS, HSBTV, HSE, HSG

## Incidents by Battalion, Station and Jurisdiction

		Com	False	Medical	Other	Public	Standby	Traffic	Vehicle	Wildlan	Total
		Fire	Alarm		Fire	Service		Collisio	Fire	d Fire	
<b>Battalion 10</b>	Station 36 North	0	3	6	1	4	0	3	0	0	17
	Palm Springs										
	Station Total		0	3	6	1	4	0	3	0	17
	Station 37 Desert	1	21	280	12	8	2	15	5	6	350
	Hot Springs										
	Station Total		1	21	280	12	8	2	15	5	350
<b>Battalion Total</b>		1	24	286	13	12	2	18	5	6	367
<b>Grand Total</b>		1	24	286	13	12	2	18	5	6	367

## Incidents by Jurisdiction

	Com Fire	False Alarm	Medical	Other Fire	Public Service	Standby	Traffic Collision	Vehicle Fire	Wildland Fire	Total
Desert Hot Springs	1	24	286	13	12	2	18	5	6	367
<b>Grand Total</b>	<b>1</b>	<b>24</b>	<b>286</b>	<b>13</b>	<b>12</b>	<b>2</b>	<b>18</b>	<b>5</b>	<b>6</b>	<b>367</b>

## Incidents by Supervisorial District - Summary

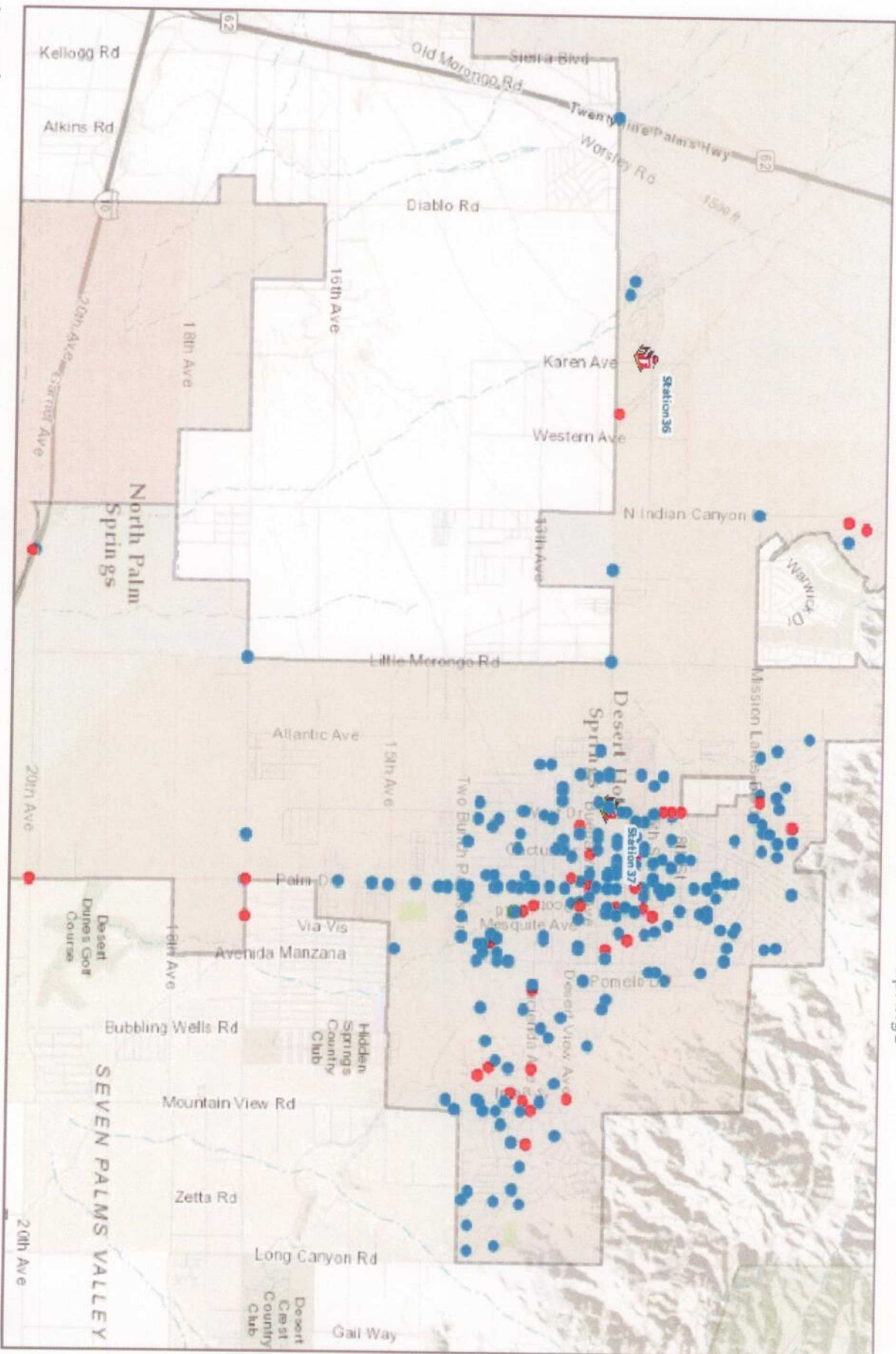
	DISTRICT 4 V. MANUEL PEREZ		Grand Total
Com Fire	1		1
False Alarm	24		24
Medical	286		286
Other Fire	13		13
Public Service Assist	12		12
Standby	2		2
Traffic Collision	18		18
Vehicle Fire	5		5
Wildland Fire	6		6
<b>Total</b>	<b>367</b>		<b>367</b>

Last Updated 12/6/2017 3:

\*Incidents are shown based on the primary response area for the incident location. This does not represent total response times for all units only the first unit in.



MONTH = 11 and YEAR = 2017 and CITYNAME = 'Desert Hot Springs'



Last Updated 12/6/2017 3

\*Incidents are shown based on the primary response area for the incident location. This does not represent total response times for all units only the first unit in.