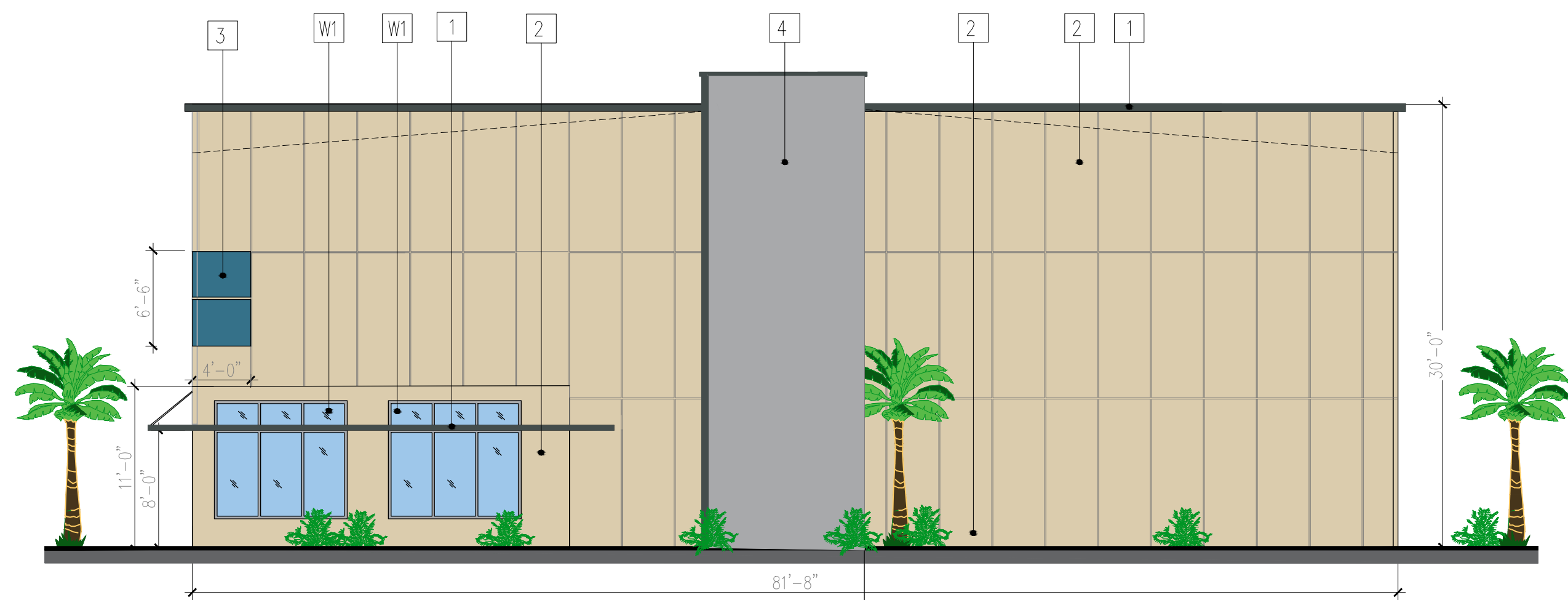
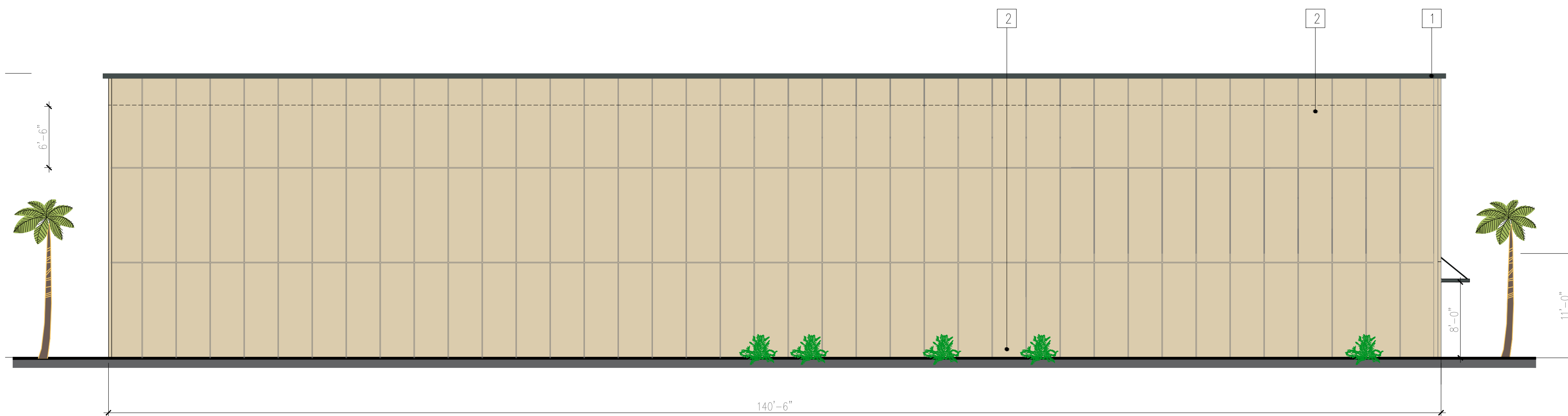


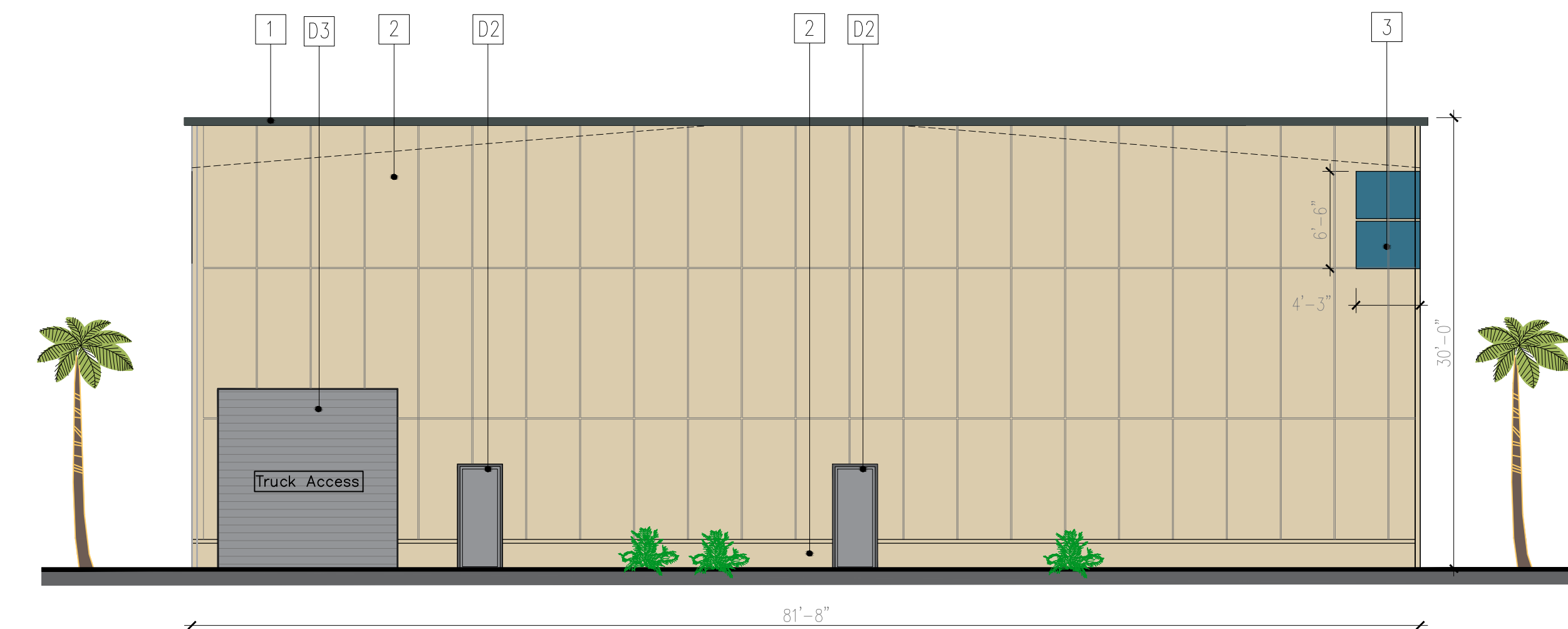
1 BUILDING D1 TYP FRONT ELEVATION
SCALE: 1/8=1'-0"



3 BUILDING D1 TYP RIGHT ELEVATION
SCALE: 1/8=1'-0"



2 BUILDING D1 TYP REAR ELEVATION
SCALE: 1/8=1'-0"



4 BUILDING D1 TYP LEFT ELEVATION
SCALE: 1/8=1'-0"

EXTERIOR FINISHES		
SYM	MATERIAL	COLOR
1	VERTICAL ELEMENTS, CAP FLASHING AND ARCHITECTURAL CANOPY	CHARCOAL GRAY @ METL SPAN
2	METAL SPAN - TUFF CAST	SAND STONE @ METL SPAN
3	METAL SPAN - TUFF CAST	TAHOE BLUE @ METL SPAN
4	METAL SPAN - TUFF CAST	SILVER METALIC @ METL SPAN
All Metl-Span colors are formulated to provide maximum energy-efficiency and solar reflectivity. All standard available Premium I and Premium II colors have been formulated for maximum solar reflectance.		

DOORS & WINDOWS SCHEDULE					
SYM	Q.	SIZE	MATERIAL	COLOR	COMMENTS
D1		PAIR 3'-0"x10'-0"	GLASS DOOR / ALUMINUM FRAME	SILVER	FRONT ENTRY- STORE FRONT
D2		3'-0"x7'-0"	HOLLOW METAL STEEL MAN DOOR	SILVER	PEDESTRIAN FLOOD DOOR PD-520
D3		12'-0"x12'-0"	ANODIZED ALUMINUM SECTIONAL ROLL UP	SILVER	AUTOMATIC TRUCK ACCESS DOOR
W1		9'-0"x8'-0"	DOUBL PANE W/ ALUMINUM FRAME	SILVER	STORE FRONT STYLE
W2		6'-0"x8'-0"	DOUBL PANE W/ ALUMINUM FRAME	SILVER	STORE FRONT STYLE
W3		6'-0"x5'-0"	DOUBL PANE W/ ALUMINUM FRAME	SILVER	STORE FRONT STYLE
W4		9'-0"x5'-0"	DOUBL PANE W/ ALUMINUM FRAME	SILVER	STORE FRONT STYLE
W5		15'-0"x8'-0"	DOUBL PANE W/ ALUMINUM FRAME	SILVER	STORE FRONT STYLE
"The PD-520 is a specially designed pedestrian door capable of providing flood protection can handle flooding conditions. The PD-520 is always in place, giving you 24/7 flood protection, while still allowing access to your facility on a daily basis."					

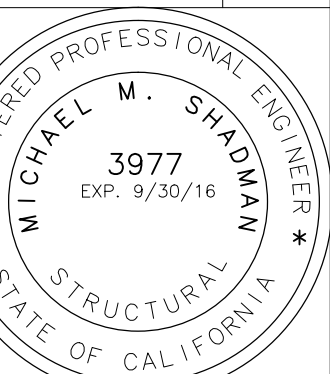
METALLIC PRODUCTS
Work that flows

PERSONNEL DOOR CANOPIES

Metallic Products keeps you covered with personnel door canopies. Make sure you have economical and attractive overhead protection from the elements with our canopies. This product is specifically designed to withstand the elements.

For installation instructions, please visit mproducts.com/products/canopies

REVISIONS	BY



THE USE OF THESE PLANS AND SPECIFICATION SHALL BE RESTRICTED TO THE SPECIFIC SITE FOR WHICH THEY WERE PREPARED AND PUBLICATION THEREOF SHALL BE EXPRESSLY LIMITED TO SUCH USE. NO REPRODUCTION OR PUBLICATION OF ANY METHOD OR WHOLE OR PART THEREOF FOR ANY OTHER PROJECT OR SITE WITHOUT THE WRITTEN CONSENT OF SHAD ENGINEERS, INC. WITHOUT PREJUDICE, VISUAL REMAINS WITH THESE PLANS AND SPECIFICATIONS SHALL CONSTITUTE PRIMA FADIE EVIDENCE OF THE ACCEPTANCE OF THE RESTRICTIONS.

MORONGO INDUSTRIAL PARK, LOT 2
MERJ LIFE, LLC; A CALIFORNIA LIMITED LIABILITY CO.
LITTLE MORONGA RD
CITY OF DESERT HOT SPRINGS

Shad Design Group
Architectural, Planning & Engineering
5550 STEVENSON CREEK BLVD SUITE 220
SAN JOSE, CA 95117
(408) 472-4225 FAX (408) 877-1528
email: shad@shadgroup.net

DATE: 6-6-2017
SCALE: AS SHOWN
DRAWN: LB
JOB NO.

A-06.1

OF SHEETS