

ANNEXATION MAP NO. 27

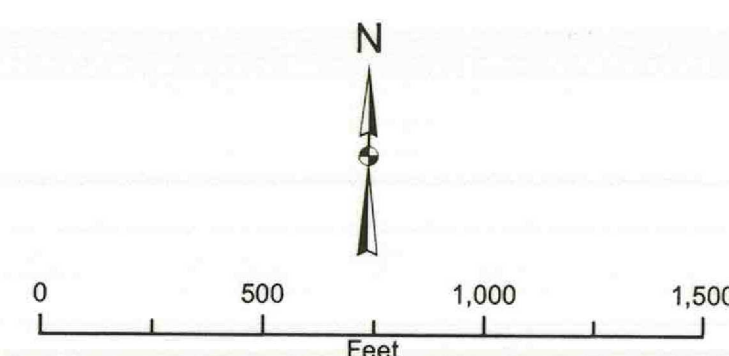
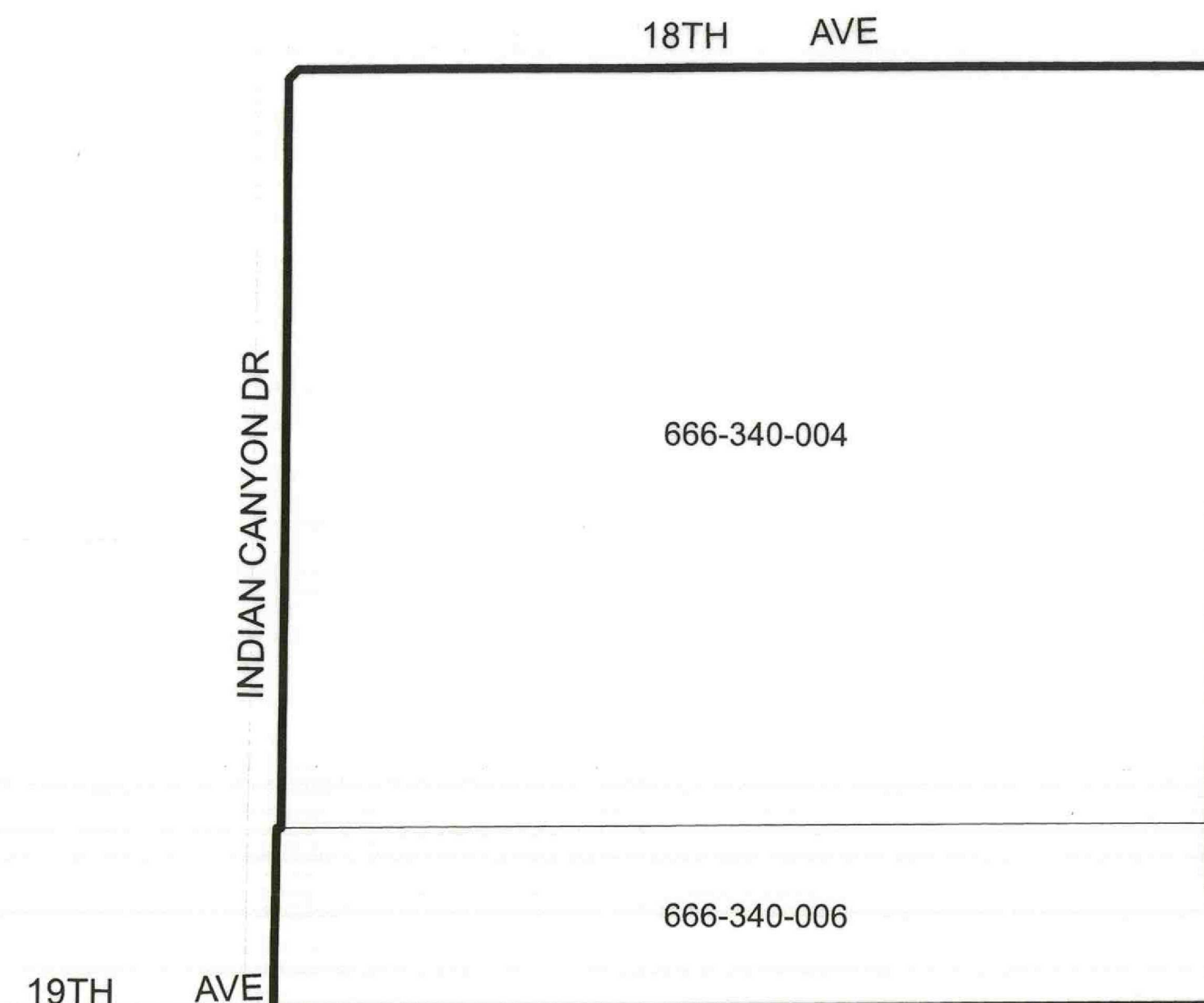
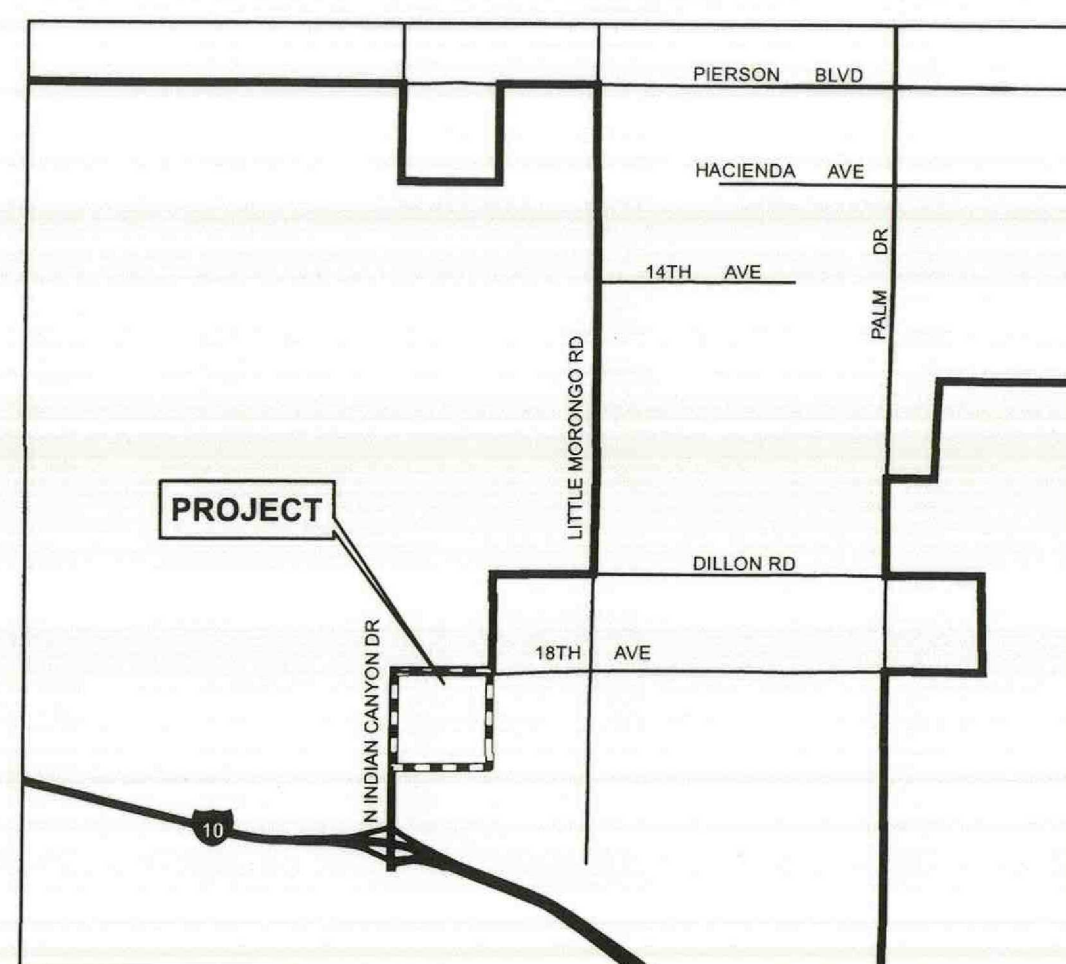
COMMUNITY FACILITIES DISTRICT NO. 2010-1 (SERVICES) CITY OF DESERT HOT SPRINGS COUNTY OF RIVERSIDE, STATE OF CALIFORNIA

THIS MAP SHOWS THE BOUNDARIES OF AREAS TO BE ANNEXED TO COMMUNITY FACILITIES DISTRICT NO. 2010-1 (SERVICES) OF THE CITY OF DESERT HOT SPRINGS, COUNTY OF RIVERSIDE, STATE OF CALIFORNIA. THE BOUNDARIES OF WHICH COMMUNITY FACILITIES DISTRICT ARE SHOWN AND DESCRIBED ON THE MAP THEREOF WHICH WAS PREVIOUSLY RECORDED ON JUNE 8, 2010, IN BOOK 74 OF MAPS OF ASSESSMENT AND COMMUNITY FACILITIES DISTRICTS AT PAGE 81 AND AS INSTRUMENT NO. 2010-0263725, IN THE OFFICE OF THE COUNTY RECORDER OF THE COUNTY OF RIVERSIDE, STATE OF CALIFORNIA.



I HEREBY CERTIFY THAT THE WITHIN MAP OR AREAS TO BE ANNEXED TO COMMUNITY FACILITIES DISTRICT NO. 2010-1 (SERVICES) OF THE CITY OF DESERT HOT SPRINGS, COUNTY OF RIVERSIDE, STATE OF CALIFORNIA, WAS APPROVED BY THE CITY COUNCIL OF THE CITY OF DESERT HOT SPRINGS AT A REGULAR MEETING THEREOF, HELD ON THE 7th DAY OF November, 2017, BY ITS RESOLUTION NO. 2017-103.


CITY CLERK
CITY OF DESERT HOT SPRINGS

VICINITY MAP NOT TO SCALE



LEGEND

-  CFD BOUNDARY
-  PARCEL LINE
- XXX-XXX-XXX** ASSESSOR PARCEL NUMBER

RECORDED THIS 15th DAY OF November, 2017, AT THE HOUR OF 3:47 O'CLOCK P.M., IN IN BOOK 81 PAGE 72 OF MAPS OF ASSESSMENT AND COMMUNITY FACILITIES DISTRICTS IN THE OFFICE OF THE COUNTY RECORDER, IN THE COUNTY OF RIVERSIDE, STATE OF CALIFORNIA.

FEE: \$ 10.00 NO.: 2017-049248
PETER ALDANA, ASSESSOR, COUNTY CLERK, RECORDER

BY:  DEPUTY

FILED IN THE OFFICE OF THE CITY CLERK, CITY OF DESERT HOT SPRINGS, THIS 7th DAY OF November, 2017.


CITY CLERK
CITY OF DESERT HOT SPRINGS