

**ANNEXATION MAP NO. 22**  
**COMMUNITY FACILITIES DISTRICT NO. 2010-1 (SERVICES)**  
**CITY OF DESERT HOT SPRINGS**  
**COUNTY OF RIVERSIDE, STATE OF CALIFORNIA**


THIS MAP SHOWS THE BOUNDARIES OF AREAS TO BE ANNEXED TO COMMUNITY FACILITIES DISTRICT NO. 2010-1 (SERVICES) OF THE CITY OF DESERT HOT SPRINGS, COUNTY OF RIVERSIDE, STATE OF CALIFORNIA. THE BOUNDARIES OF WHICH COMMUNITY FACILITIES DISTRICT ARE SHOWN AND DESCRIBED ON THE MAP THEREOF WHICH WAS PREVIOUSLY RECORDED ON JUNE 8, 2010, IN BOOK 74 OF MAPS OF ASSESSMENT AND COMMUNITY FACILITIES DISTRICTS AT PAGE 81 AND AS INSTRUMENT NO. 2010-0263725, IN THE OFFICE OF THE COUNTY RECORDER OF THE COUNTY OF RIVERSIDE, STATE OF CALIFORNIA.

I HEREBY CERTIFY THAT THE WITHIN MAP OR AREAS TO BE ANNEXED TO COMMUNITY FACILITIES DISTRICT NO. 2010-1 (SERVICES) OF THE CITY OF DESERT HOT SPRINGS, COUNTY OF RIVERSIDE, STATE OF CALIFORNIA, WAS APPROVED BY THE CITY COUNCIL OF THE CITY OF DESERT HOT SPRINGS AT A REGULAR MEETING THEREOF, HELD ON THE 17th DAY OF SEPTEMBER, 2017, BY ITS RESOLUTION NO. 2017-090.

  
CITY CLERK  
CITY OF DESERT HOT SPRINGS

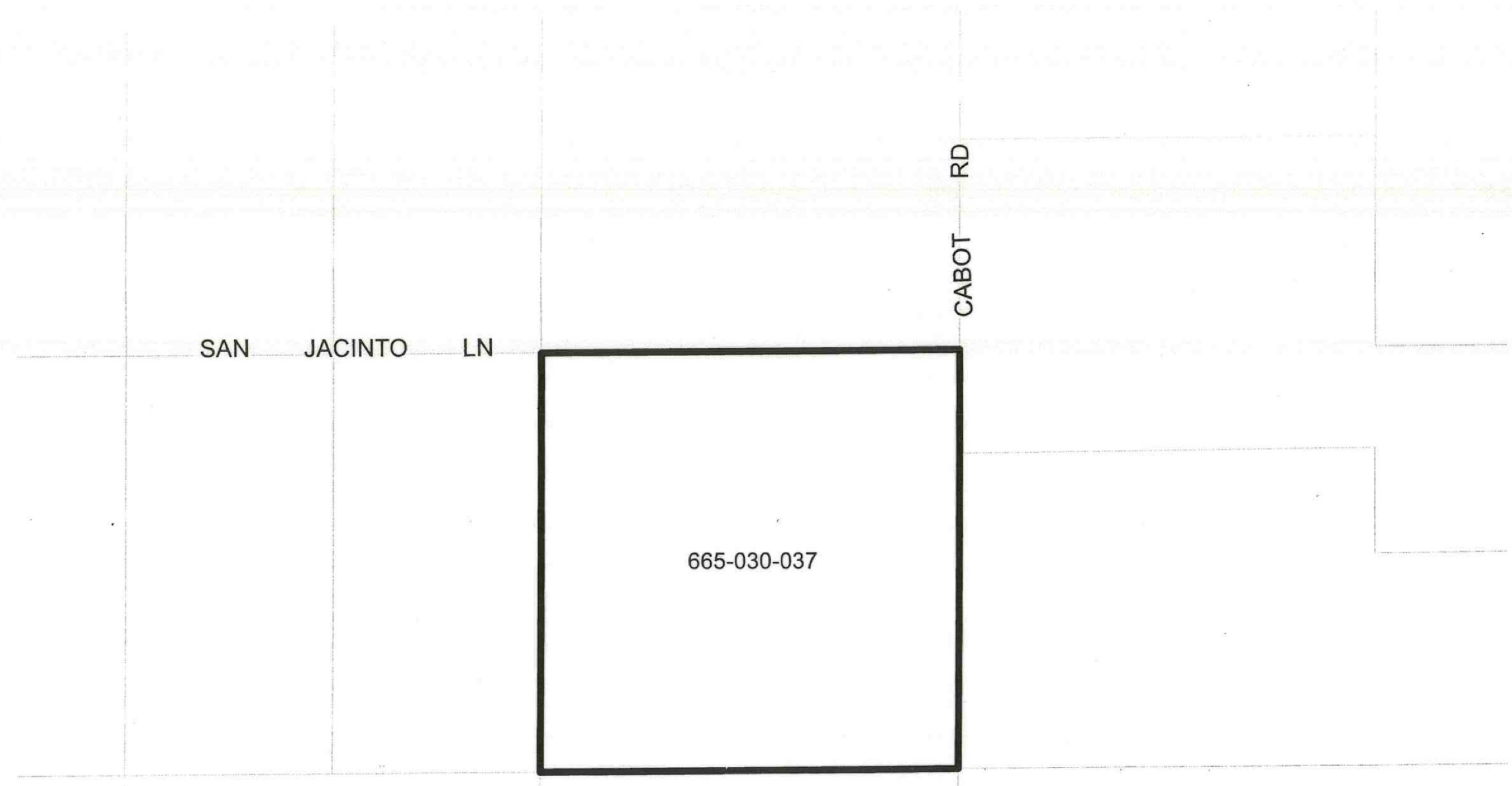
RECORDED THIS 27th DAY OF September, 2017, AT THE HOUR OF 2:38 O'CLOCK P.M., IN IN BOOK 81 PAGE 39 OF MAPS OF ASSESSMENT AND COMMUNITY FACILITIES DISTRICTS IN THE OFFICE OF THE COUNTY RECORDER, IN THE COUNTY OF RIVERSIDE, STATE OF CALIFORNIA.

FEE: \$10.00 NO.: 2017-0400844  
PETER ALDANA, ASSESSOR, COUNTY CLERK, RECORDER

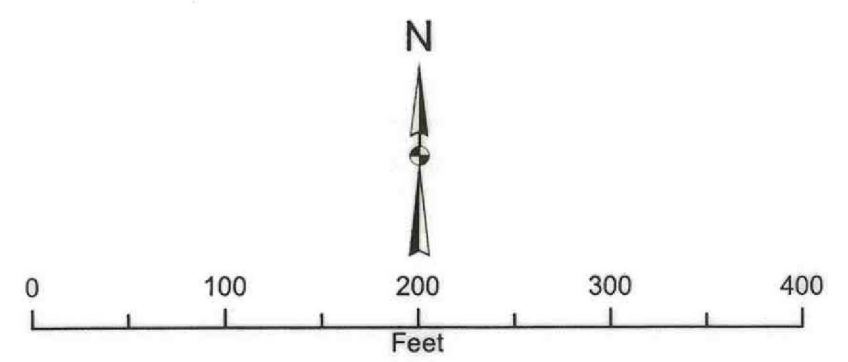
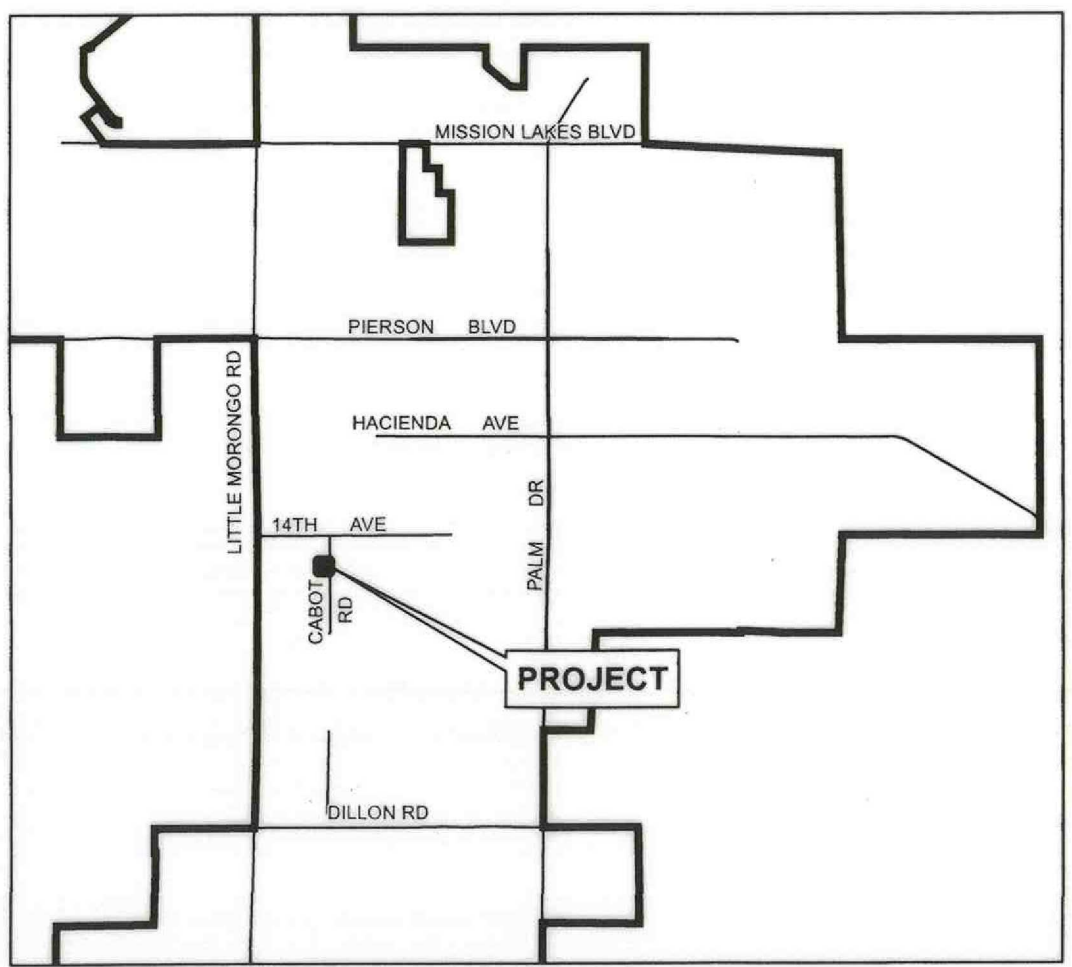
BY:   
DEPUTY



FILED IN THE OFFICE OF THE CITY CLERK, CITY OF DESERT HOT SPRINGS, THIS 17th DAY OF SEPTEMBER, 2017.

  
CITY CLERK  
CITY OF DESERT HOT SPRINGS



**VICINITY MAP**  
**NOT TO SCALE**



- LEGEND**
-  CFD BOUNDARY
  -  PARCEL LINE
  - XXX-XXX-XXX** ASSESSOR PARCEL NUMBER