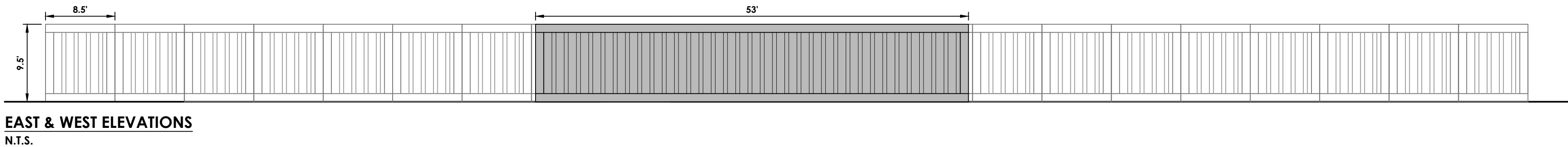
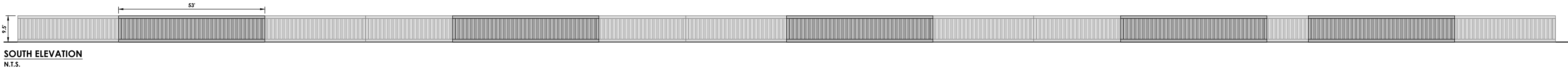
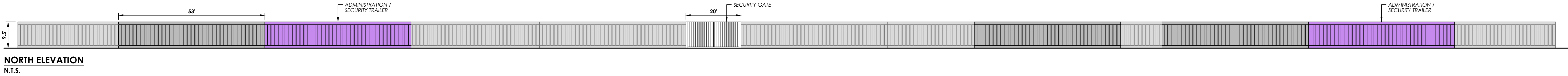
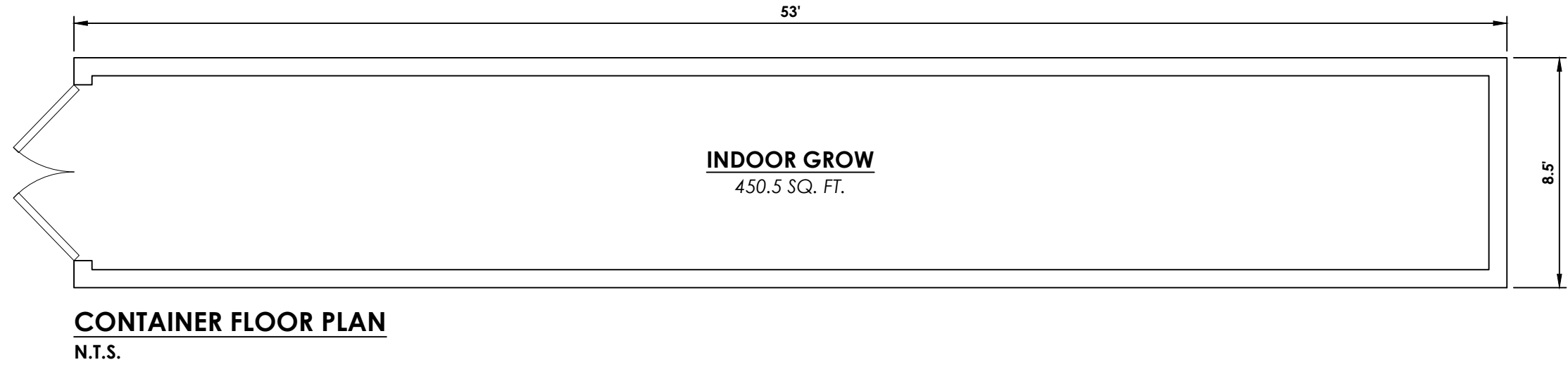


HOT DESERT SPRINGS, LLC.  
ECOPOD ELEVATIONS

EXHIBIT DATE: SEPTEMBER 13, 2017

DATA TABLE

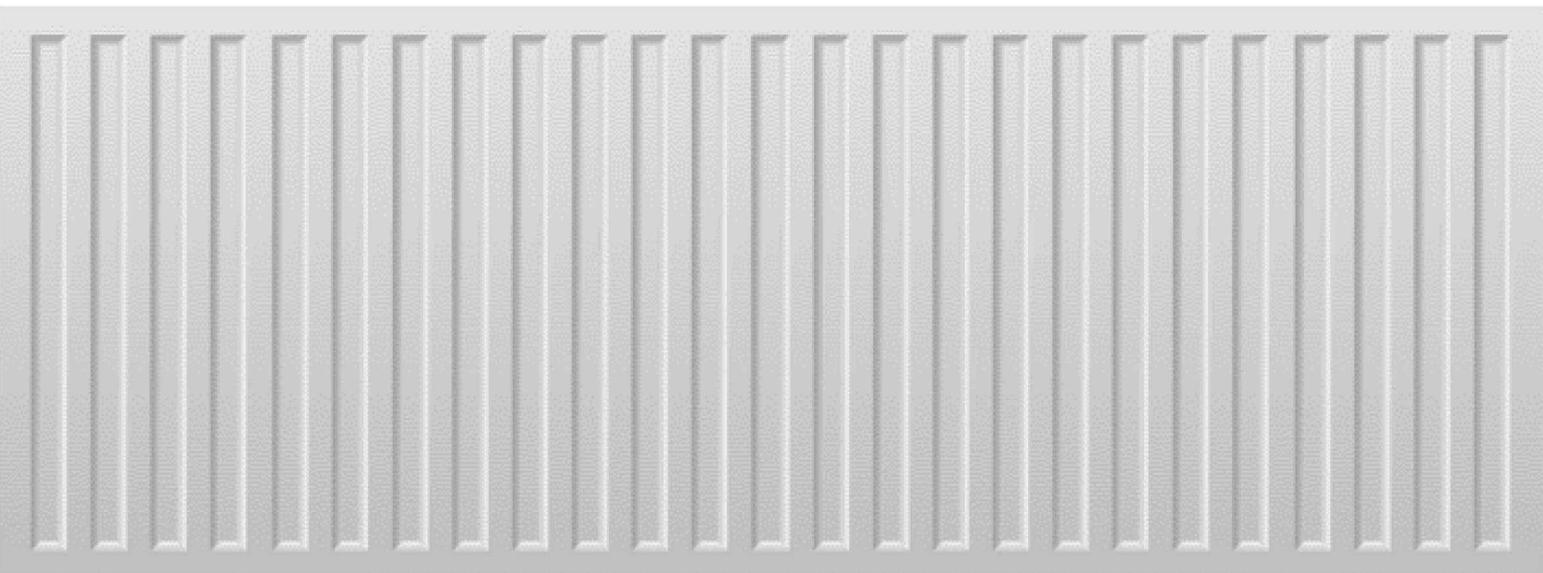
- CONDITIONAL USE PERMIT INTENT:
1. MEDICAL MARIJUANA CULTIVATION IN ACCORDANCE WITH DESERT HOT SPRINGS MUNICIPAL CODE CHAPTERS 5.50 AND 17.180 INCLUDING PLANT CLONING, CULTIVATION, TRIMMING, DRYING, EXTRACTION, AND PROCESSING OF OILS AND BUTTERS, CO2 EQUIPMENT USE FOR ENHANCED PLANT GROWTH AND EXTRACTION, PRODUCT PACKAGING AND SHIPPING.
  2. THIS FACILITY HAS BEEN DESIGNED IN ACCORDANCE WITH DESERT HOT SPRINGS REGULATIONS GOVERNING THE CULTIVATION OF MEDICAL MARIJUANA (MUNICIPAL CODE CHAPTER 5.50 AND 17.180), CURRENT STATE LAWS CODIFIED IN THE COMPASSIONATE USE ACT OF 1996 (CALIFORNIA HEALTH AND SAFETY CODE SECTIONS 11362.7 THROUGH 11362.83), THE CALIFORNIA ATTORNEY GENERAL'S GUIDELINES FOR THE SECURITY AND NON-DIVERSION OF MARIJUANA GROWTH FOR MEDICAL USE (ISSUED IN AUGUST, 2008) AND THE MEDICINAL AND ADULT-USE CANNABIS REGULATION AND SAFETY ACT (SB 94), THE REQUESTED USE, SITE LAYOUT, AND SITE OPERATIONS AS WELL AS ANY RELATED ACTIVITIES, SUCH AS TRANSPORTATION, MANUFACTURING, AND TESTING ARE DESIGNED FOR FULL COMPLIANCE AND VESTING UNDER BOTH EXISTING AND POTENTIAL FUTURE CITY AND STATE LAWS GOVERNING THE CULTIVATION OF MEDICAL MARIJUANA.
  3. INSIDE THE BUILDING, THE DIVISION OF LARGER SUITES INTO SMALLER ONES IS ALLOWED TO PROVIDE FLEXIBILITY IN APPLYING FOR STATE CANNABIS CULTIVATION LICENSES. FOR EXAMPLE, A SUITE CONTAINING A 22,000 SF CULTIVATION SPACE MAY BE FURTHER DIVIDED INTO TWO SUITES CONTAINING 10,000 SF CULTIVATION SPACES. THE FINAL SUITE CONFIGURATION WILL BE SHOWN ON THE ARCHITECTURAL CONSTRUCTION DRAWINGS. SUCH FLOOR PLAN CHANGES WOULD BE CONSIDERED IN SUBSTANTIAL CONFORMANCE WITH THIS CUP AND MAY BE APPROVED BY THE CITY PLANNING DEPARTMENT ADMINISTRATIVELY SUBJECT TO DEMONSTRATION BY THE APPLICANT THAT SUFFICIENT OFF-STREET PARKING IS MAINTAINED.



CONTAINER INTERIOR  
N.T.S.



CONTAINER EXTERIOR  
N.T.S.



PAINTED STEEL SHIPPING CONTAINER MATERIAL  
N.T.S.