

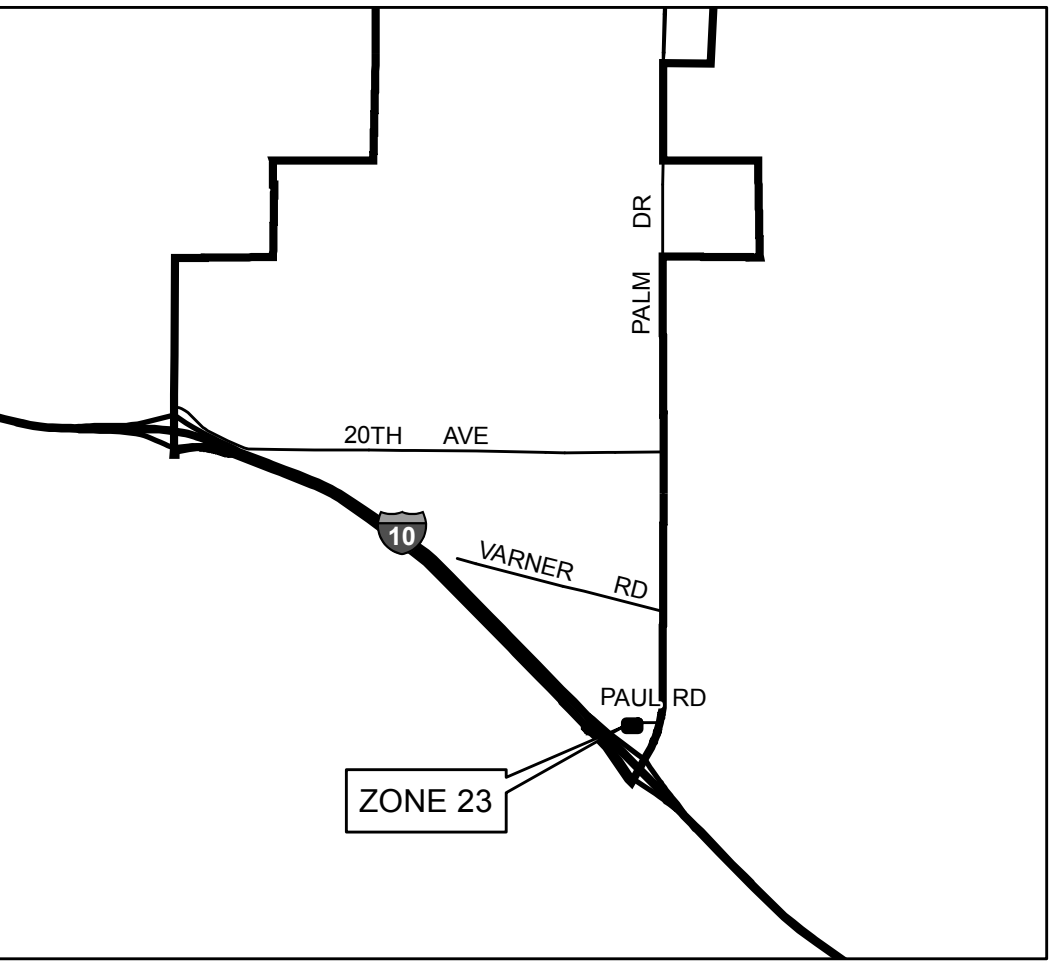
BOUNDARY MAP
SPECIAL PUBLIC SAFETY TAX AREA
ZONE 23 (WILLIAM A. CONNER)
CITY OF DESERT HOT SPRINGS

COUNTY OF RIVERSIDE, STATE OF CALIFORNIA
SE⁴ OF NW⁴, SEC. 30, T.3S., R.5E.

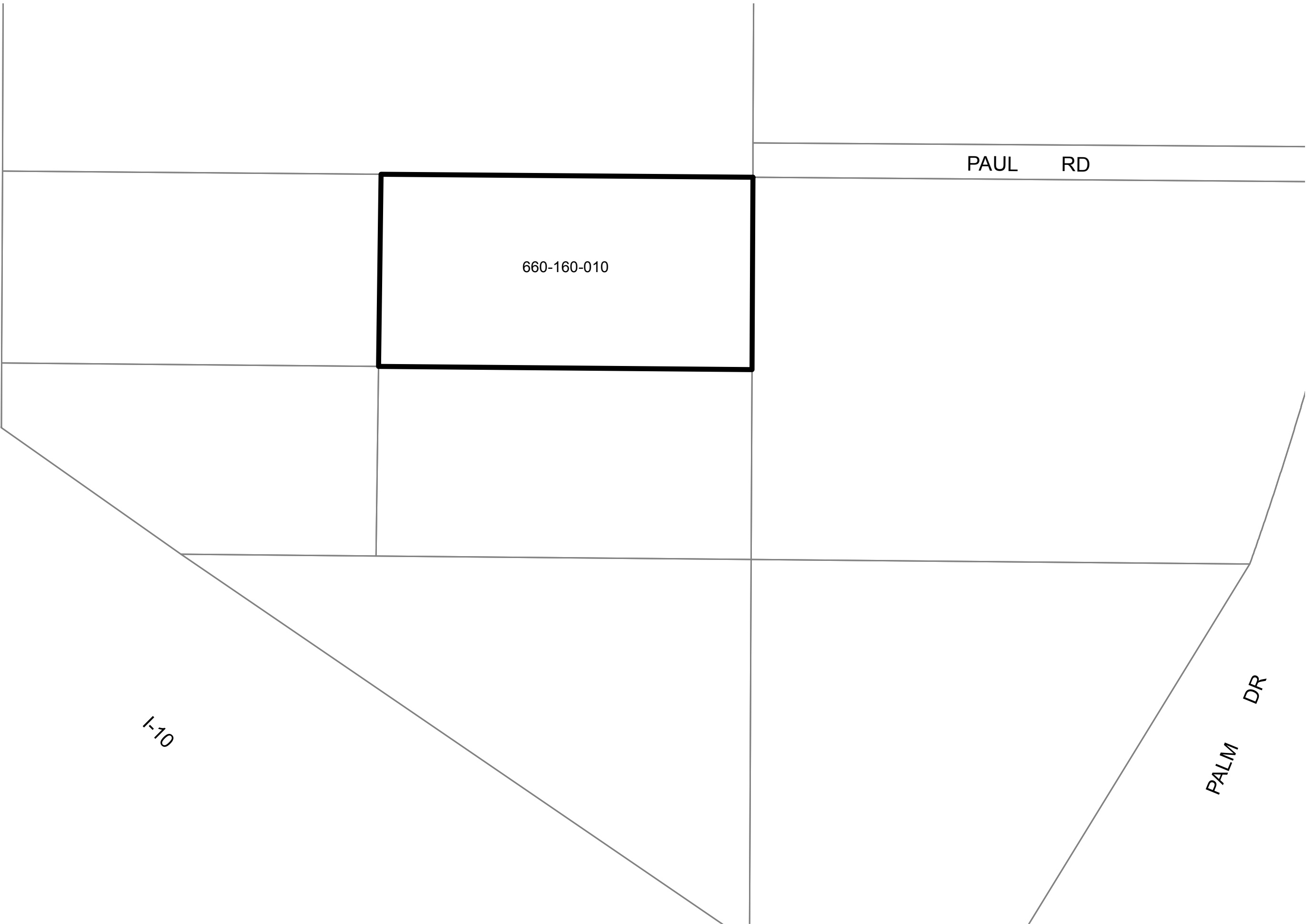
LEGEND

— ZONE 23 BOUNDARY

XXX-XXX-XXX ASSESSOR PARCEL NUMBER



VICINITY MAP
NOT TO SCALE



1 inch = 80 feet