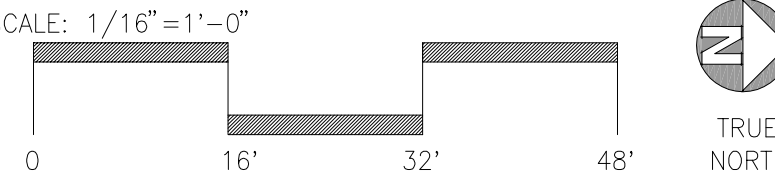



OVERALL FLOOR PLAN scale: $1/16" = 1'-0"$ **A**

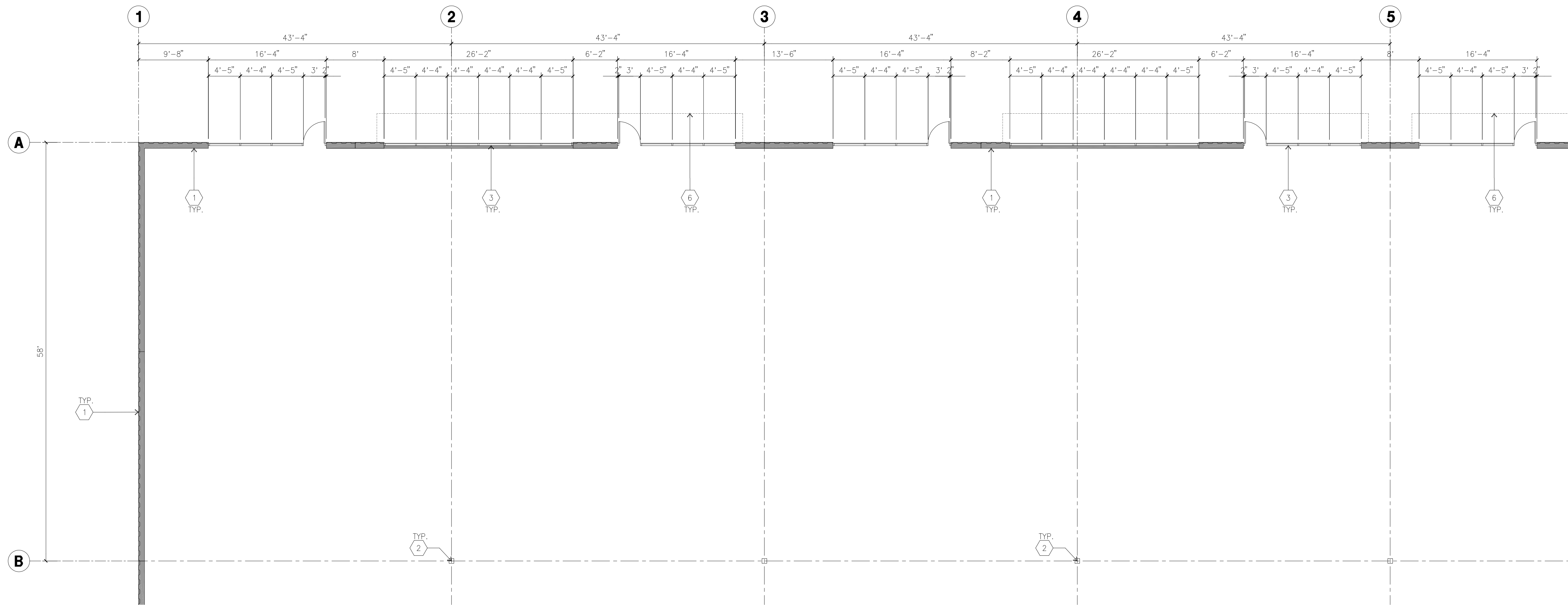


KETNOTES - FLOOR PLAN

- | | |
|---|--|
| 1 | METAL PANEL. |
| 2 | STRUCTURAL STEEL COLUMN. |
| 3 | TYPICAL STOREFRONT SYSTEM WITH GLAZING. SEE OFFICE BLOW-UP AND ELEVATIONS FOR SIZE, COLOR AND LOCATIONS. |
| 4 | 3'X7" HOLLOW METAL EXTERIOR MAIN DOOR. |
| 5 | 12' X 14' DRIVE THRU. SECTIONAL OH., STANDARD GRADE. |
| 6 | CANOPY |
| 7 | CONC. FILLED GUARD POST. 6" DIA. U.N.O.. 42"H. |
| 8 | EXTERIOR DOWNSPOUT WITH OVERFLOW SCUPPER, |
| 9 | INTERIOR DOWNSPOUT WITH OVERFLOW SCUPPER, |

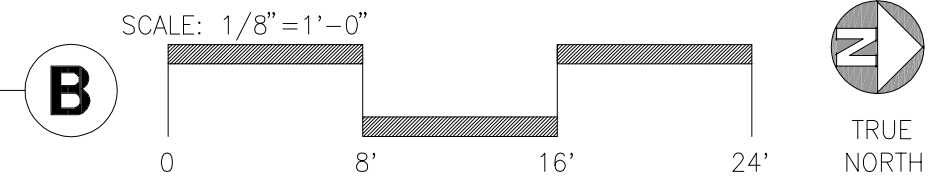
GENERAL NOTES - FLOOR PLAN

- B. FIRE HOSE LOCATIONS SHALL BE APPROVED PER FIRE DEPARTMENT.
- C. THE BUILDING FLOOR SLAB IS SLOPED, SEE "C" DRAWINGS FOR FINISH SURFACE ELEVATIONS.
- D. NOT USED
- E. WAREHOUSE INTERIOR STEEL WALLS ARE PAINTED WHITE. COLUMNS ARE TO RECEIVE PRIMER ONLY. ALL GYP. BD. WALLS IN WAREHOUSE TO RECEIVE 1 COAT OF WHITE TO COVER.
- F. SLOPE POUR STRIP 1/2" TO EXTERIOR AT ALL MANDOUR EXITS.
- G. ALL DIMENSIONS ARE TO THE FACE OF STEEL PANEL WALL, GRIDLINE, OR FACE OF STUD U.N.O.
- H. SEE CIVIL DRAWINGS FOR POINT OF CONNECTIONS TO OFF-SITE UTILITIES. CONTRACTOR TO VERIFY ACTUAL UTILITY LOCATIONS. PLUMBING/ELECTRICAL COORDINATION.
- I. NOT USED.
- J. CONTRACTOR TO PROTECT AND KEEP THE FLOOR SLAB CLEAN. ALL EQUIPMENT TO BE DIAPERED INCLUDING CARS AND TRUCKS.
- K. ALL EXIT MAIN DOORS IN WAREHOUSE TO HAVE ILLUMINATED EXIT SIGN. HARDWARE. 
- L. HIGHLY FLAMMABLE AND COMBUSTIBLE MATERIAL MUST BE APPROVED PRIOR TO USE.
- M. EACH EXTERIOR EXIT DOOR SHALL BE IDENTIFIED BY A TACTILE EXIT SIGN WITH THE WORDS "EXIT".
THE MOUNTING HEIGHT FOR SUCH SIGNAGE SHALL BE 60" FROM FINISH FLOOR LEVEL TO THE CENTER OF THE SIGN.
- N. NON-ACCESSIBLE DOOR. PROVIDE WARNING SIGN LOCATED IN THE INTERIOR SIDE PER CBC 11338.1.1.1
- O. ALL ROOF MOUNTED MATERIALS SHALL BE FULLY SCREENED FROM PUBLIC VIEW



ENLARGED FLOOR PLAN

scale: $1/8" = 1'-0"$



hpa, inc.
8831 bardeen avenue, - ste. #100
irvine, ca
92612
tel: 949-863-1770
fax: 949-863-0851
email: hpa@hparchs.com

Owner:



20201 SW Birch Street
suite 100
Newport Beach, CA 92660
tel: 949-252-1122
email: rdorame@mastercraftresidential.com

Projects:

**GOLD FLORA
FARMS**

19th street & North Indian Cyn. Dr.
Desert Hot springs, CA.

Consultants:

CIVIL
STRUCTURAL
MECHANICAL
PLUMBING
ELECTRICAL
LANDSCAPE
FIRE PROTECTION
SOILS ENGINEER

MDS

Visual Concepts
RGA Landscape Arch.

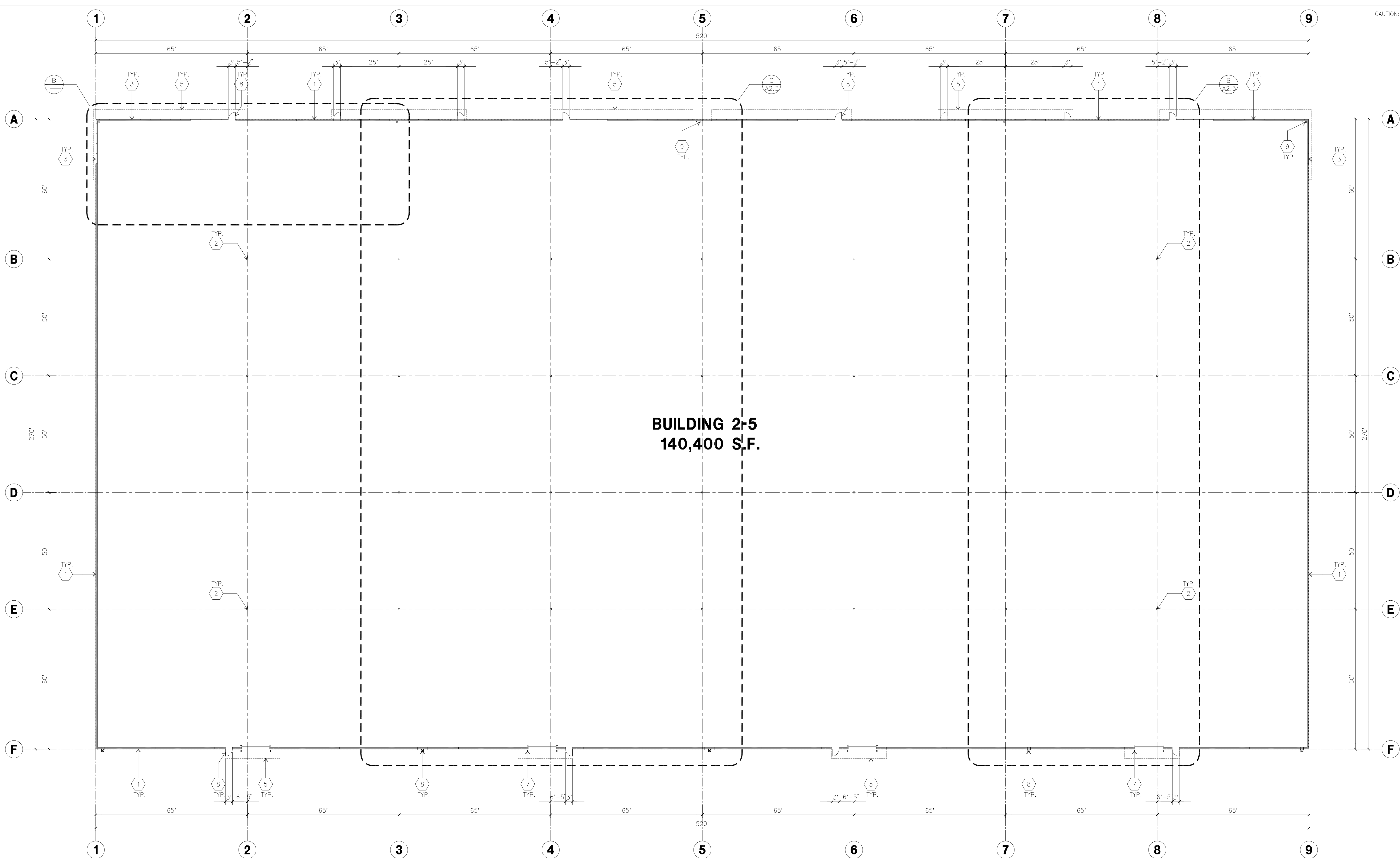
Geosols Inc.

Title: FLOOR PLAN

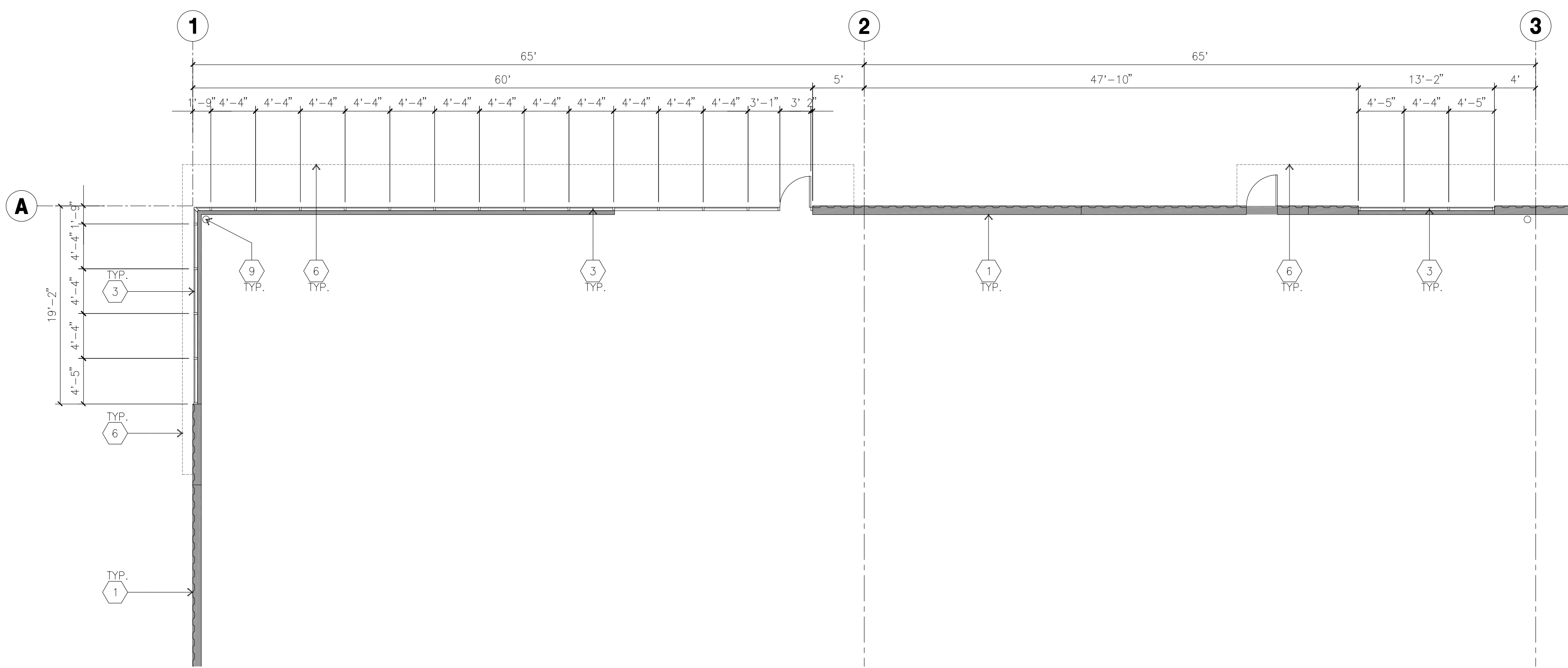
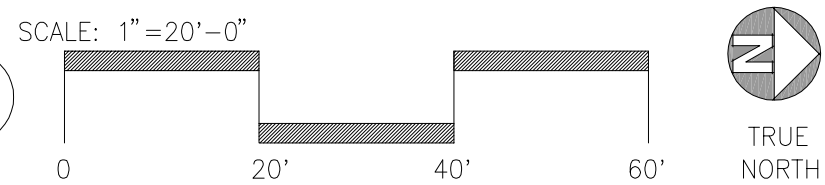
Project Number: 16207
Drawn by: J.F.C.
Date: 12/02/13

sheet:

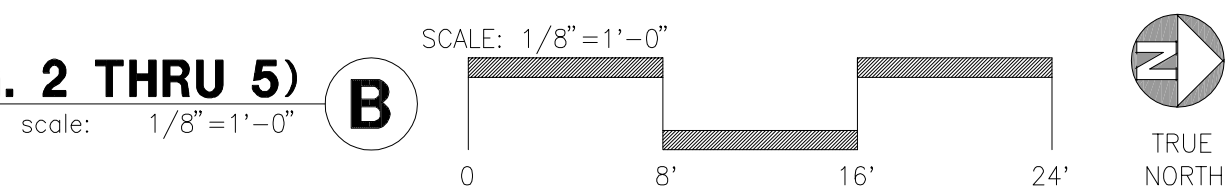
A2.2



OVERALL FLOOR PLAN (TYP. TO BLDG. 2 THRU 5)



ENLARGED FLOOR PLAN (TYP. TO BLDG. 2 THRU 5)



KETNOTES - FLOOR PLAN

- 1 METAL PANEL.
- 2 STRUCTURAL STEEL COLUMN.
- 3 TYPICAL STOREFRONT SYSTEM WITH GLAZING. SEE OFFICE BLOW-UP AND ELEVATIONS FOR SIZE, COLOR AND LOCATIONS.
- 4 3'X7' HOLLOW METAL EXTERIOR MAN DOOR.
- 5 12' X 14' DRIVE THRU. SECTIONAL OH., STANDARD GRADE.
- 6 CANOPY
- 7 CONC. FILLED GUARD POST. 6" DIA. U.N.O.. 42"H.
- 8 EXTERIOR DOWNSPOUT WITH OVERFLOW SCUPPER,
- 9 INTERIOR DOWNSPOUT WITH OVERFLOW SCUPPER,

GENERAL NOTES - FLOOR PLAN

- B. FIRE HOSE LOCATIONS SHALL BE APPROVED PER FIRE DEPARTMENT.
- C. THE BUILDING FLOOR SLAB IS SLOPED, SEE "C" DRAWINGS FOR FINISH SURFACE ELEVATIONS.
- D. NOT USED
- E. WAREHOUSE INTERIOR STEEL WALLS ARE PAINTED WHITE. COLUMNS ARE TO RECEIVE PRIMER ONLY. ALL GYP. BD. WALLS IN WAREHOUSE TO RECEIVE 1" COAT OF WHITE TO COVER.
- F. SLOPE FOUR STRIP 1/2" TO EXTERIOR AT ALL MANDOUR EXITS.
- G. ALL DIMENSIONS ARE TO THE FACE OF STEEL PANEL WALL, GRIDLINE, OR FACE OF STUD U.N.O.
- H. SEE CIVIL DRAWINGS FOR POINT OF CONNECTIONS TO OFF-SITE UTILITIES. CONTRACTOR TO VERIFY ACTUAL UTILITY LOCATIONS. PLUMBING/ELECTRICAL COORDINATION.
- I. NOT USED.
- J. CONTRACTOR TO PROTECT AND KEEP THE FLOOR SLAB CLEAN. ALL EQUIPMENT TO BE DIAPERED INCLUDING CARS AND TRUCKS.
- K. ALL EXIT MAIN DOORS IN WAREHOUSE TO HAVE ILLUMINATED EXIT SIGN. HARDWARE.
- L. HIGHLY FLAMMABLE AND COMBUSTIBLE MATERIAL MUST BE APPROVED PRIOR TO USE.
- M. EACH EXTERIOR EXIT DOOR SHALL BE IDENTIFIED BY A TACTILE EXIT SIGN WITH THE WORDS "EXIT". THE MOUNTING HEIGHT FOR SUCH SIGNAGE SHALL BE 60" FROM FINISH FLOOR LEVEL TO THE CENTER OF THE SIGN.
- N. NON-ACCESSIBLE DOOR, PROVIDE WARNING SIGN LOCATED IN THE INTERIOR SIDE PER CBC 1133B.1.1.1.
- O. ALL ROOF MOUNTED MATERIALS SHALL BE FULLY SCREENED FROM PUBLIC VIEW.



hpa, inc.
18831 bardeen avenue, - ste. #100
irvine, ca 92612
tel: 949-863-1770
fax: 949-863-0851
email: hpa@hparchs.com

Owner:



20201 SW Birch Street
suite 100
Newport Beach, CA 92660
tel: 949-252-1122
email: rdorame@mastercraftresidential.com

Project:

GOLD FLORA
FARMS

19th street & North Indian Cyn. Dr.
Desert Hot springs, CA.

Consultants:

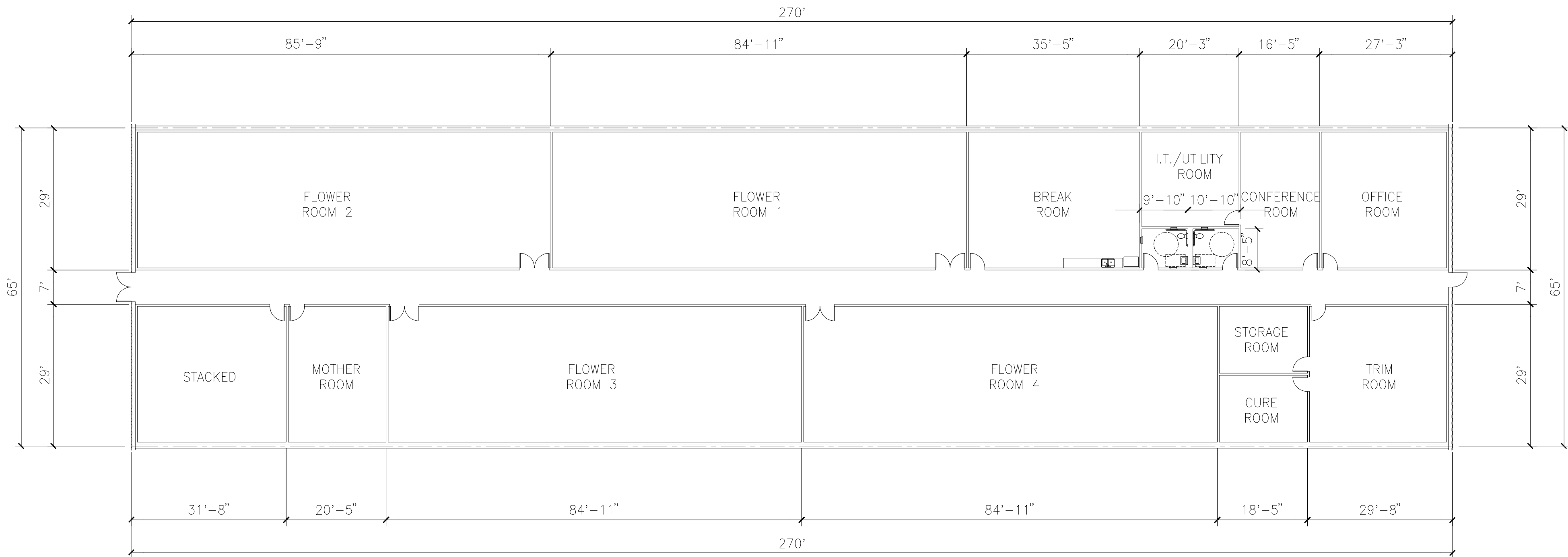
CIVIL	MDS
STRUCTURAL	
MECHANICAL	
PLUMBING	
ELECTRICAL	Visual Concepts
LANDSCAPE	RGA Landscape Arch.
FIRE PROTECTION	
SOILS ENGINEER	Geosols Inc.

Title:PROPOSED OFFICE LAYOUT

Project Number:	16207
Drawn by:	J.F.C.
Date:	12/02/13
Revision:	

Sheet:

A2.3



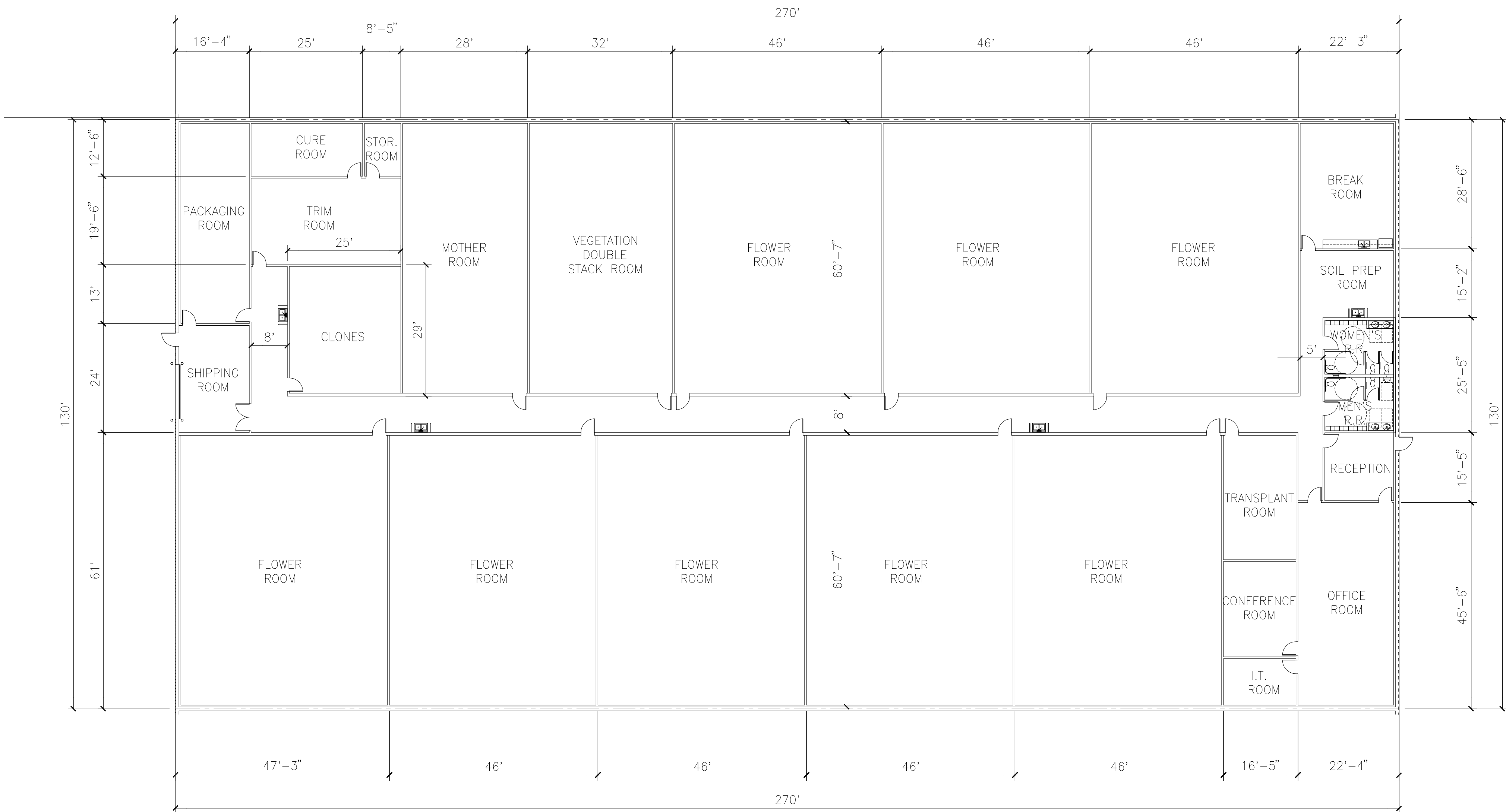
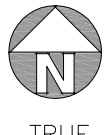
PROPOSED OFFICE LAYOUT (TYP TO BLDG. 2 THRU 5)

scale: 1/16"=1'-0"

B

SCALE: 1/16"=1'-0"

0 16' 32' 48'



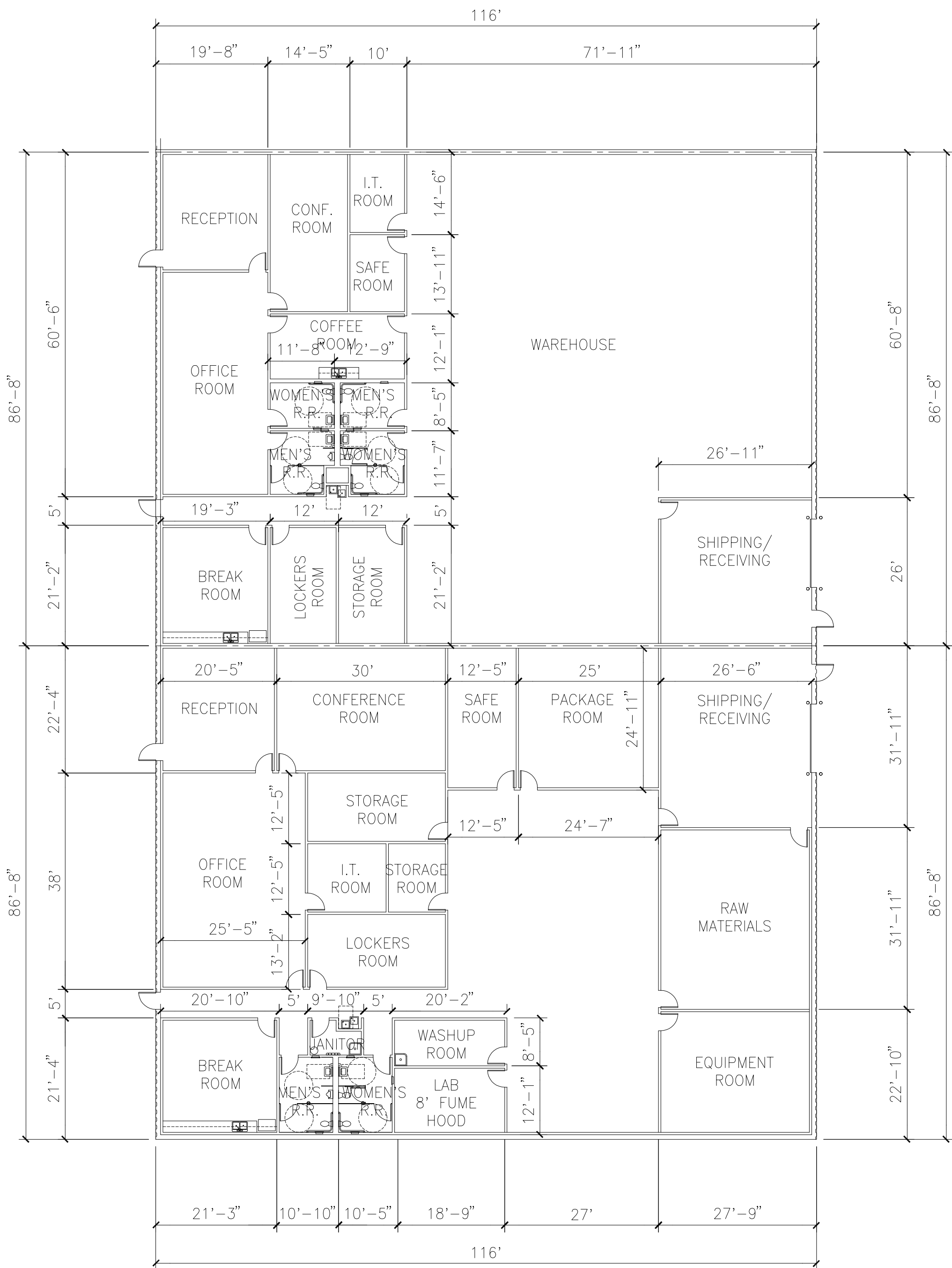
PROPOSED OFFICE LAYOUT (TYP TO BLDG. 2 THRU 5)

scale: 1/16"=1'-0"

C

SCALE: 1/16"=1'-0"

0 16' 32' 48'



PROPOSED BLDG 1 OFFICE LAYOUT, TYP.

scale: 1/16"=1'-0"

A

SCALE: 1/16"=1'-0"

0 16' 32' 48'





hpa, inc.
18831 bardeen avenue, - ste. #100
irvine, ca 92612
tel: 949-853-1770
fax: 949-853-0851
email: hpa@hparchs.com

Owner:



20201 SW Birch Street
suite 100
Newport Beach, CA 92660
tel: 949-252-1122
email: rdorame@mastercraftresidential.com

Project:

GOLD FLORA
FARMS

19th street & North Indian Cyn. Dr.
Desert Hot springs, CA.

Consultants:

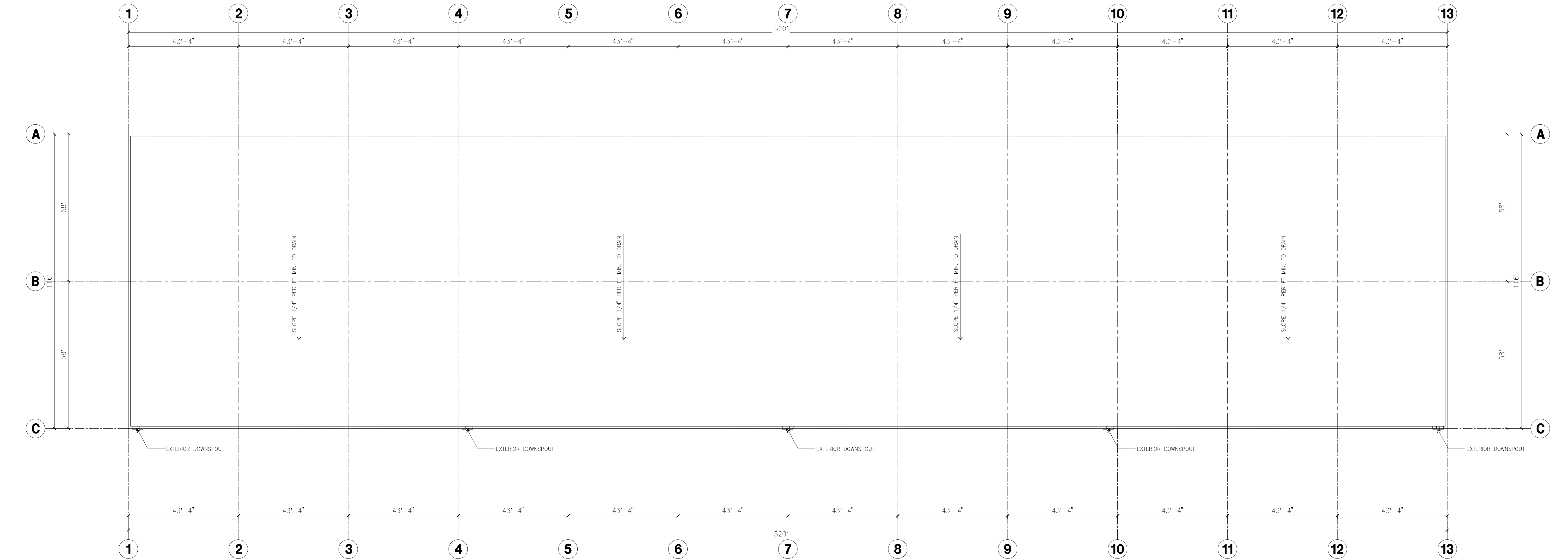
CIVIL MDS
STRUCTURAL
MECHANICAL
PLUMBING
ELECTRICAL
LANDSCAPE
FIRE PROTECTION
Visual Concepts
RGA Landscape Arch.
SOILS ENGINEER Geosols Inc.

Title: Roof Plan

Project Number: 16207
Drawn by: J.F.C.
Date: 12/02/13
Revision:

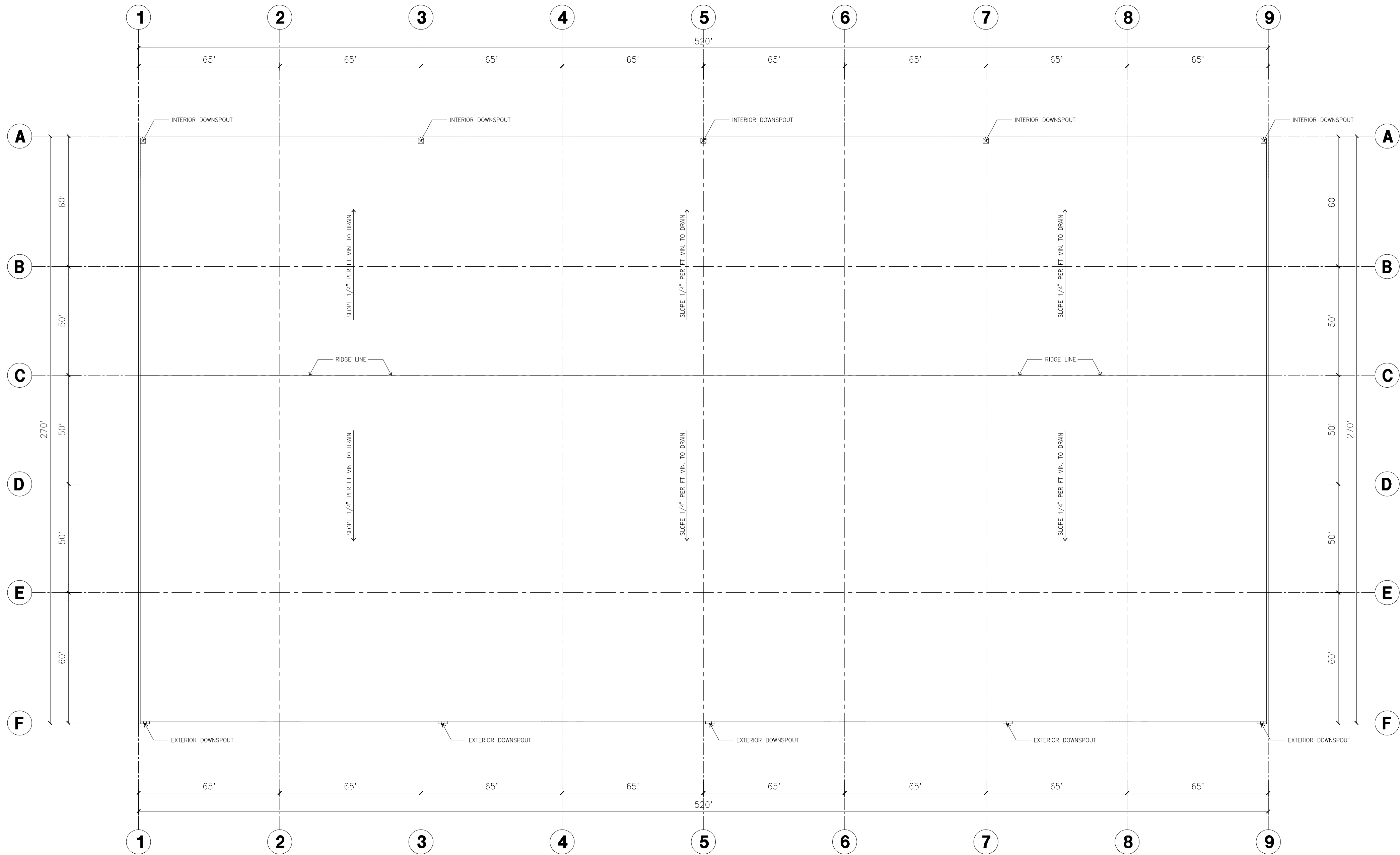
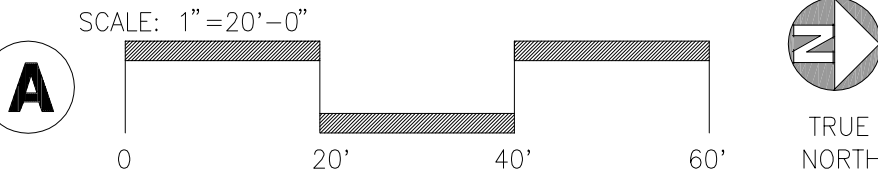
Sheet:

A4.1



OVERALL ROOF PLAN BLDG. 1

scale: 1"=20'-0"



OVERALL ROOF PLAN (TYP. TO BLDG. 2-5)

scale: 1"=30'-0"

