

ANNEXATION MAP NO. 12

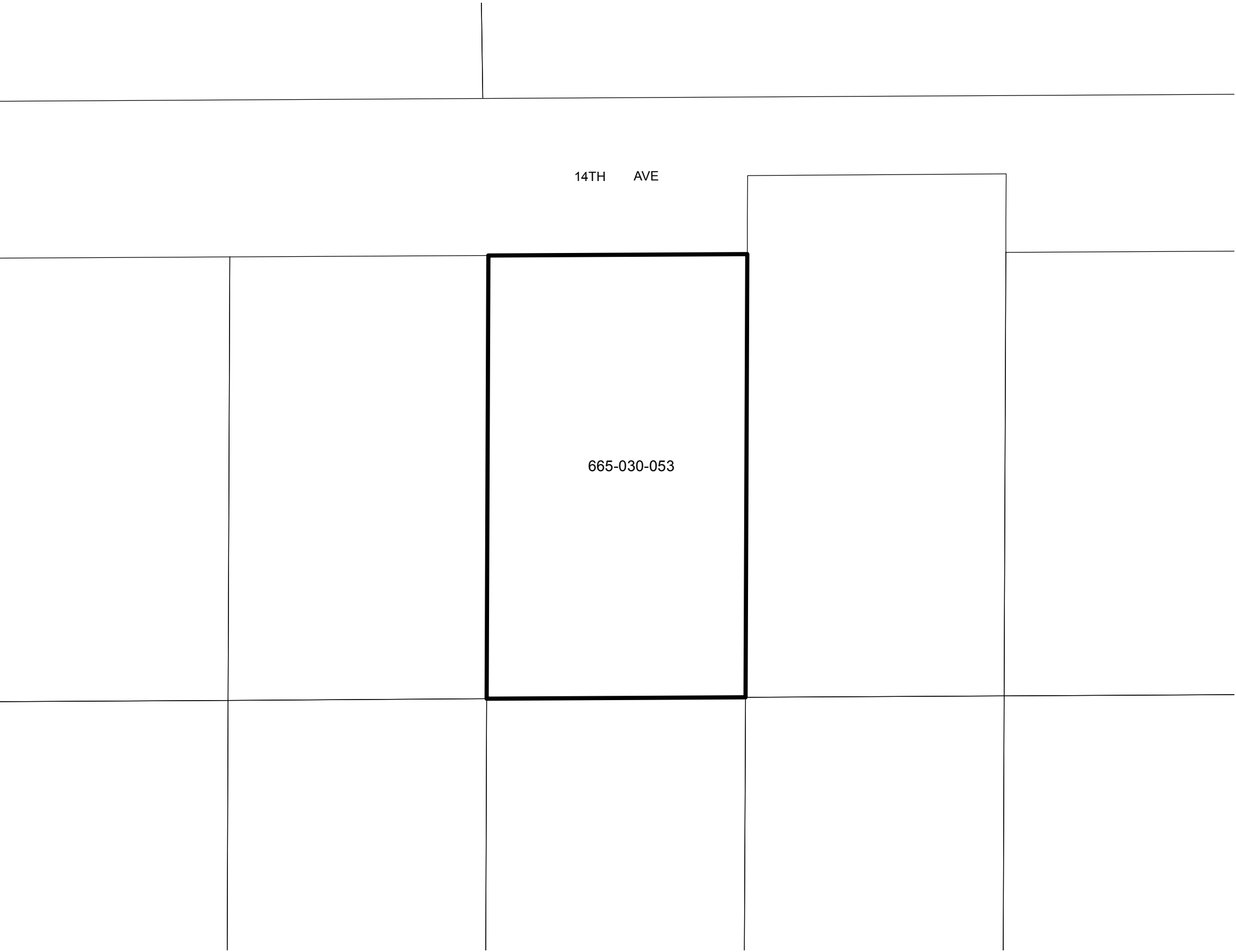
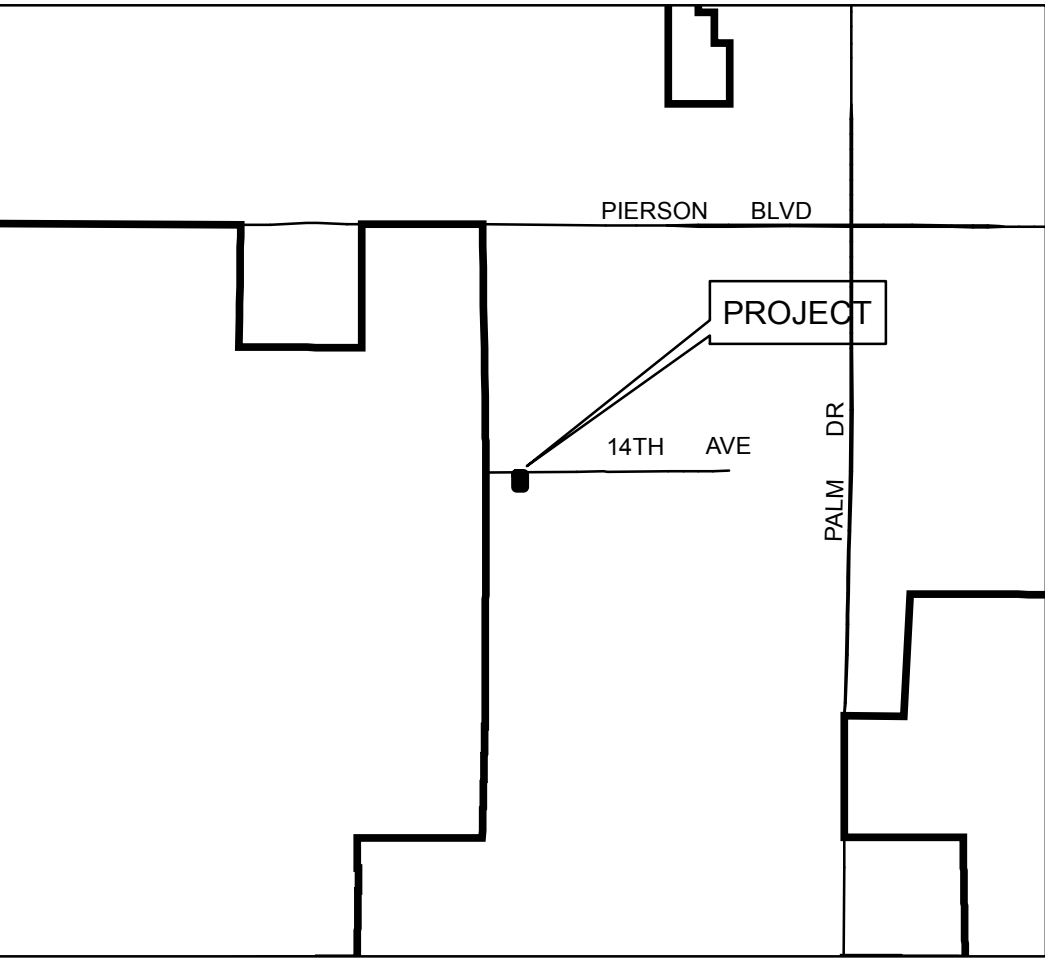
COMMUNITY FACILITIES DISTRICT NO. 2010-1 (SERVICES)  
CITY OF DESERT HOT SPRINGS  
COUNTY OF RIVERSIDE, STATE OF CALIFORNIA

THIS MAP SHOWS THE BOUNDARIES OF AREAS TO BE ANNEXED TO COMMUNITY FACILITIES DISTRICT NO. 2010-1 (SERVICES) OF THE CITY OF DESERT HOT SPRINGS, COUNTY OF RIVERSIDE, STATE OF CALIFORNIA. THE BOUNDARIES OF WHICH COMMUNITY FACILITIES DISTRICT ARE SHOWN AND DESCRIBED ON THE MAP THEREOF WHICH WAS PREVIOUSLY RECORDED ON JUNE 8, 2010, IN BOOK 74 OF MAPS OF ASSESSMENT AND COMMUNITY FACILITIES DISTRICTS AT PAGE 81 AND AS INSTRUMENT NO. 2010-0263725, IN THE OFFICE OF THE COUNTY RECORDER OF THE COUNTY OF RIVERSIDE, STATE OF CALIFORNIA.

I HEREBY CERTIFY THAT THE WITHIN MAP OR AREAS TO BE ANNEXED TO COMMUNITY FACILITIES DISTRICT NO. 2010-1 (SERVICES) OF THE CITY OF DESERT HOT SPRINGS, COUNTY OF RIVERSIDE, STATE OF CALIFORNIA, WAS APPROVED BY THE CITY COUNCIL OF THE CITY OF DESERT HOT SPRINGS AT A REGULAR MEETING THEREOF, HELD ON THE \_\_\_\_\_ DAY OF \_\_\_\_\_, 20\_\_\_\_, BY ITS RESOLUTION NO. \_\_\_\_\_.

CITY CLERK  
CITY OF DESERT HOT SPRINGS

VICINITY MAP  
NOT TO SCALE



NOT TO SCALE

RECORDED THIS \_\_\_\_ DAY OF \_\_\_\_\_, 20\_\_\_\_, AT THE HOUR OF \_\_\_\_ O'CLOCK \_\_M, IN IN BOOK \_\_\_\_ PAGE \_\_\_\_ OF MAPS OF ASSESSMENT AND COMMUNITY FACILITIES DISTRICTS IN THE OFFICE OF THE COUNTY RECORDER, IN THE COUNTY OF RIVERSIDE, STATE OF CALIFORNIA.

FEE: \_\_\_\_\_ NO.: \_\_\_\_\_  
PETER ALDANA, ASSESSOR, COUNTY CLERK, RECORDER

BY: \_\_\_\_\_  
DEPUTY

FILED IN THE OFFICE OF THE CITY CLERK, CITY OF DESERT HOT SPRINGS, THIS \_\_\_\_ DAY OF \_\_\_\_\_, 20\_\_\_\_.

CITY CLERK  
CITY OF DESERT HOT SPRINGS

LEGEND

- CFD BOUNDARY
- PARCEL LINE

XXX-XXX-XXX ASSESSOR PARCEL NUMBER