

Riverside County Fire Department/ CAL FIRE

Emergency Incident Statistics



John R. Hawkins

Fire Chief

5/3/2017

Report Provided By: Riverside County Fire Department

Communications and Technology Division

GIS Section

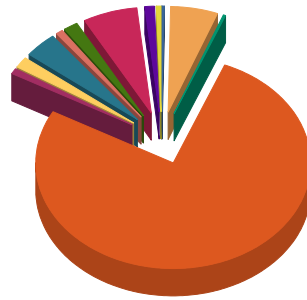
Please refer to Map and Incident by Battalion, Station, Jurisdiction

Incidents Reported for the month of April, 2017 and Desert Hot Springs City

*Incidents are shown based on the primary response area for the incident location. This does not represent total response times for all units only the first unit in.

Response Activity

Incidents Reported for the month of April, 2017 and Desert Hot Springs City



| | | |
|-------------------------|-----|--------|
| Com Fire | 1 | 0.3% |
| False Alarm | 19 | 5.5% |
| Haz Mat | 1 | 0.3% |
| Medical | 267 | 76.9% |
| Multi-Fam Dwelling Fire | 3 | 0.9% |
| Other Fire | 6 | 1.7% |
| Public Service Assist | 13 | 3.7% |
| Res Fire | 3 | 0.9% |
| Standby | 6 | 1.7% |
| Traffic Collision | 22 | 6.3% |
| Vehicle Fire | 4 | 1.2% |
| Wildland Fire | 2 | 0.6% |
| Total: | 347 | 100.0% |

| | |
|-------------------------|-----|
| Com Fire | 1 |
| False Alarm | 19 |
| Haz Mat | 1 |
| Medical | 267 |
| Multi-Fam Dwelling Fire | 3 |
| Other Fire | 6 |
| Public Service Assist | 13 |
| Res Fire | 3 |
| Standby | 6 |
| Traffic Collision | 22 |
| Vehicle Fire | 4 |
| Wildland Fire | 2 |
| <hr/> | |
| Incident Total: | 347 |

Average Enroute to Onscene Time*

Enroute Time = When a unit has been acknowledged as responding. Onscene Time = When a unit has been acknowledge as being on scene. For any other statistic outside Enroute to Onscene please contact the IT Help Desk at 951-940-6900

| <5 Minutes | +5 Minutes | +10 Minutes | +20 Minutes | Average | % 0 to 5 min |
|------------|------------|-------------|-------------|---------|--------------|
| 266 | 57 | 5 | 0 | 3.7 | 81.1% |

The following incidents are included in the total number of records but not in the average time HZM, HZMMC, OAC, OAF, OAM, OAMAD, OAMAI, OAMTE, OAMVA, OAP, OAR, OAV, OUT, OOU, LEB, LEO, LEI, BRNPMT, OES, PAA, PAD, PAF, PAO, PAP, HFS, HFSAM, HFSCA, HSBT, HSBTC, HSBTS, HSBTV, HSE, HSG

Incidents by Battalion, Station and Jurisdiction

| | | | Com Fire | False Alarm | Haz Mat | Medical | Multi-Fa m | Other Fire | Public Service | Res Fire | Standby | Traffic Collisio | Vehicle Fire | Wildlan d Fire | Total | |
|--------------|----------------------------------|--------------------|-------------|----------------|---------|---------|---------------|---------------|-------------------|-------------|---------|---------------------|-----------------|-------------------|-------|-----|
| Battalion 10 | Station 35 Thousand Palms | Desert Hot Springs | 0 | 0 | 0 | 0 | 0 | 0 | 0 | 0 | 0 | 0 | 1 | 0 | 1 | |
| | | Station Total | 0 | 0 | 0 | 0 | 0 | 0 | 0 | 0 | 0 | 0 | 0 | 1 | 0 | 1 |
| | Station 36 North Palm Springs | Desert Hot Springs | 0 | 1 | 0 | 11 | 0 | 0 | 1 | 0 | 0 | 0 | 3 | 0 | 0 | 16 |
| | | Station Total | 0 | 1 | 0 | 11 | 0 | 0 | 1 | 0 | 0 | 0 | 3 | 0 | 0 | 16 |
| | Station 37 Desert Hot Springs | Desert Hot Springs | 1 | 18 | 1 | 256 | 3 | 6 | 12 | 3 | 6 | 6 | 19 | 3 | 2 | 330 |
| | | Station Total | 1 | 18 | 1 | 256 | 3 | 6 | 12 | 3 | 6 | 6 | 19 | 3 | 2 | 330 |
| | Battalion Total | | | 1 | 19 | 1 | 267 | 3 | 6 | 13 | 3 | 6 | 22 | 4 | 2 | 347 |
| Grand Total | | | 1 | 19 | 1 | 267 | 3 | 6 | 13 | 3 | 6 | 22 | 4 | 2 | 347 | |

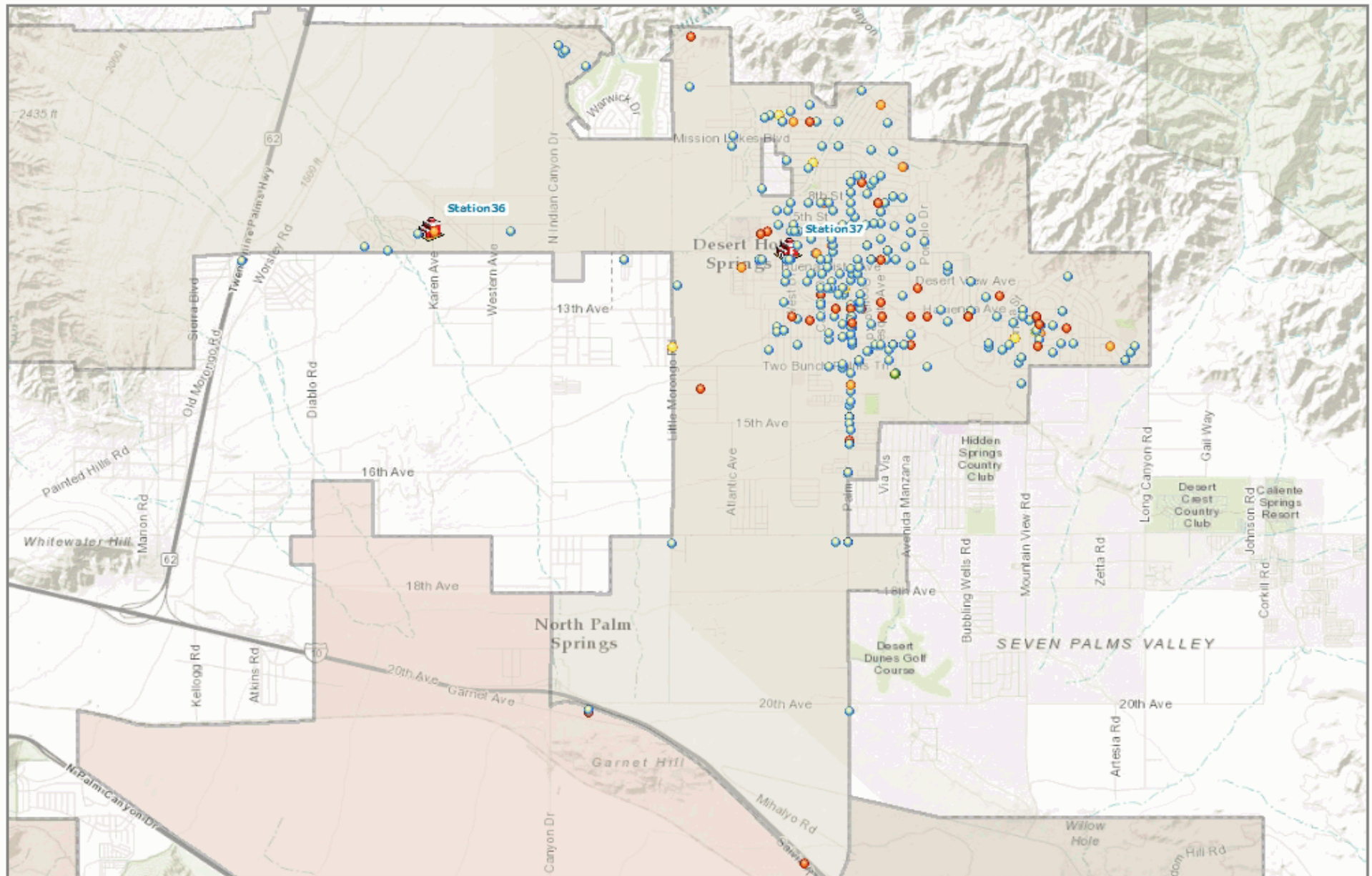
Incidents by Jurisdiction

| | Com Fire | False Alarm | Haz Mat | Medical | Multi-Fa m | Other Fire | Public Service | Res Fire | Standby | Traffic Collision | Vehicle Fire | Wildland Fire | Total |
|--------------------|----------|-------------|----------|------------|---------------|------------|----------------|----------|----------|-------------------|--------------|---------------|------------|
| Desert Hot Springs | 1 | 19 | 1 | 267 | 3 | 6 | 13 | 3 | 6 | 22 | 4 | 2 | 347 |
| Grand Total | 1 | 19 | 1 | 267 | 3 | 6 | 13 | 3 | 6 | 22 | 4 | 2 | 347 |



Incidents by Supervisorial District - Summary

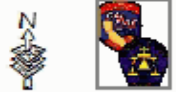
| | DISTRICT 4 JOHN BENOIT | DISTRICT 5 MARION ASHLEY | Grand Total |
|-------------------------|---------------------------|-----------------------------|----------------|
| Com Fire | 1 | 0 | 1 |
| False Alarm | 19 | 0 | 19 |
| Haz Mat | 1 | 0 | 1 |
| Medical | 267 | 0 | 267 |
| Multi-Fam Dwelling Fire | 3 | 0 | 3 |
| Other Fire | 6 | 0 | 6 |
| Public Service Assist | 13 | 0 | 13 |
| Res Fire | 3 | 0 | 3 |
| Standby | 5 | 1 | 6 |
| Traffic Collision | 22 | 0 | 22 |
| Vehicle Fire | 4 | 0 | 4 |
| Wildland Fire | 2 | 0 | 2 |
| Total | 346 | 1 | 347 |

MONTH = 4 and YEAR = 2017 and CITYNAME = 'Desert Hot Springs'



Legend

- | | | | |
|--|--|---|--|
| ● Fire | ● Other Misc | Riverside County |  Fire Station |
| ● Haz Mat | ● Public Service Assists | Reservations |  Casinos |
| ● Medical | ● Hazard | | |



Riverside County Fire GIS