



hpa, inc.
18831 bardeen avenue, - ste. #100
irvine, ca 92612
tel: 949-863-1770
fax: 949-863-0851
email: hpa@hparchis.com

Owner:



20201 SW Birch Street
suite 100
Newport Beach, CA 92660
tel: 949-252-1122
email: rdorame@mastercraftresidential.com

Project:

GOLD FLORA
FARMS

19th street & North Indian Cyn. Dr.
Desert Hot springs, CA.

Consultants:

CIVIL
STRUCTURAL
MECHANICAL
PLUMBING
ELECTRICAL
LANDSCAPE
FIRE PROTECTION
SOILS ENGINEER

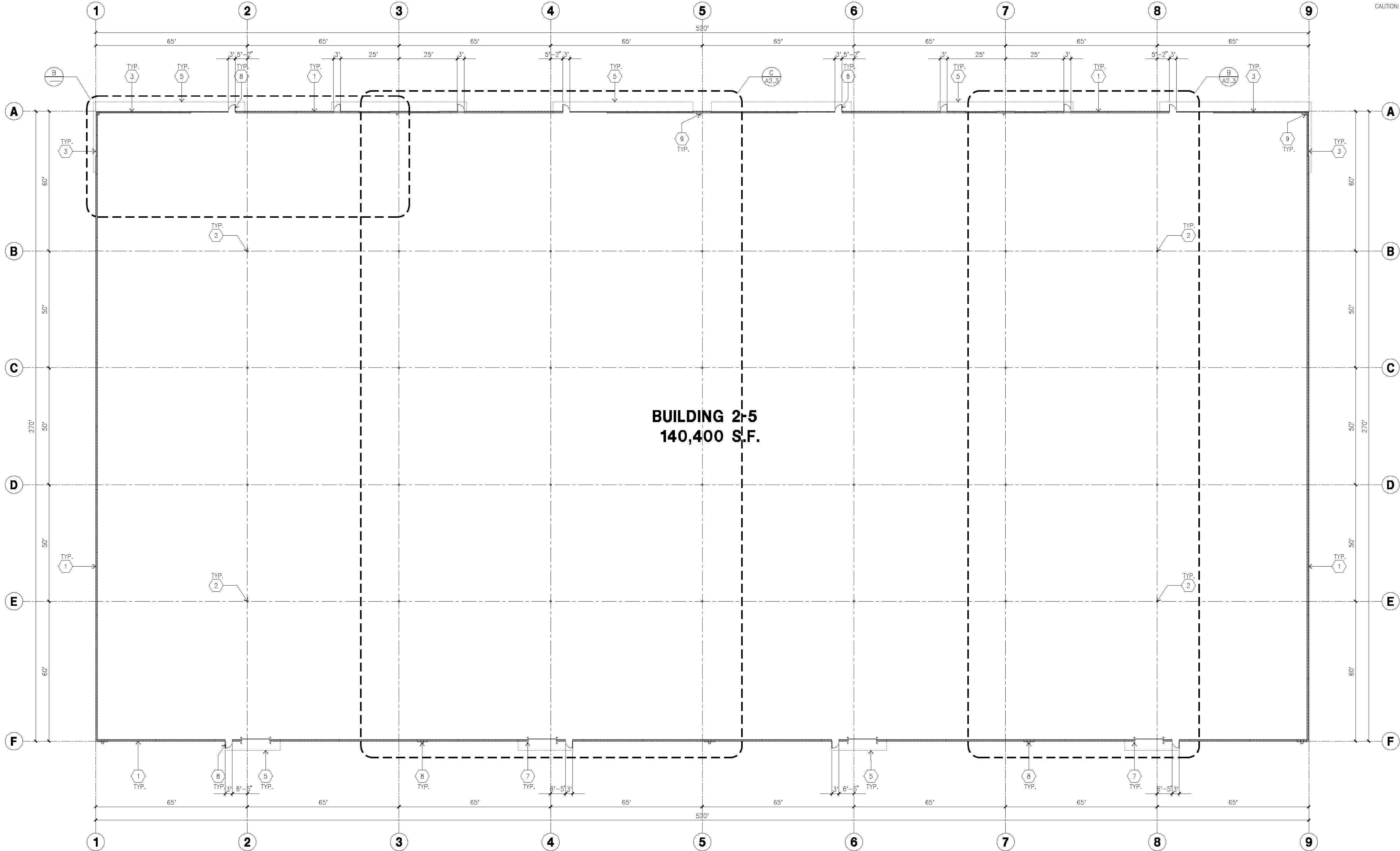
MDS
Visual Concepts
RGA Landscape Arch.
Geosols Inc.

Title: FLOOR PLAN

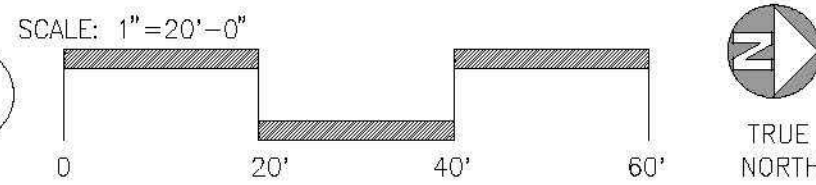
Project Number: 16207
Drawn by: J.F.C.
Date: 12/02/13
Revision:

Sheet:

A2.2



OVERALL FLOOR PLAN (TYP. TO BLDG. 2 THRU 5)
scale: 1"=20'-0"

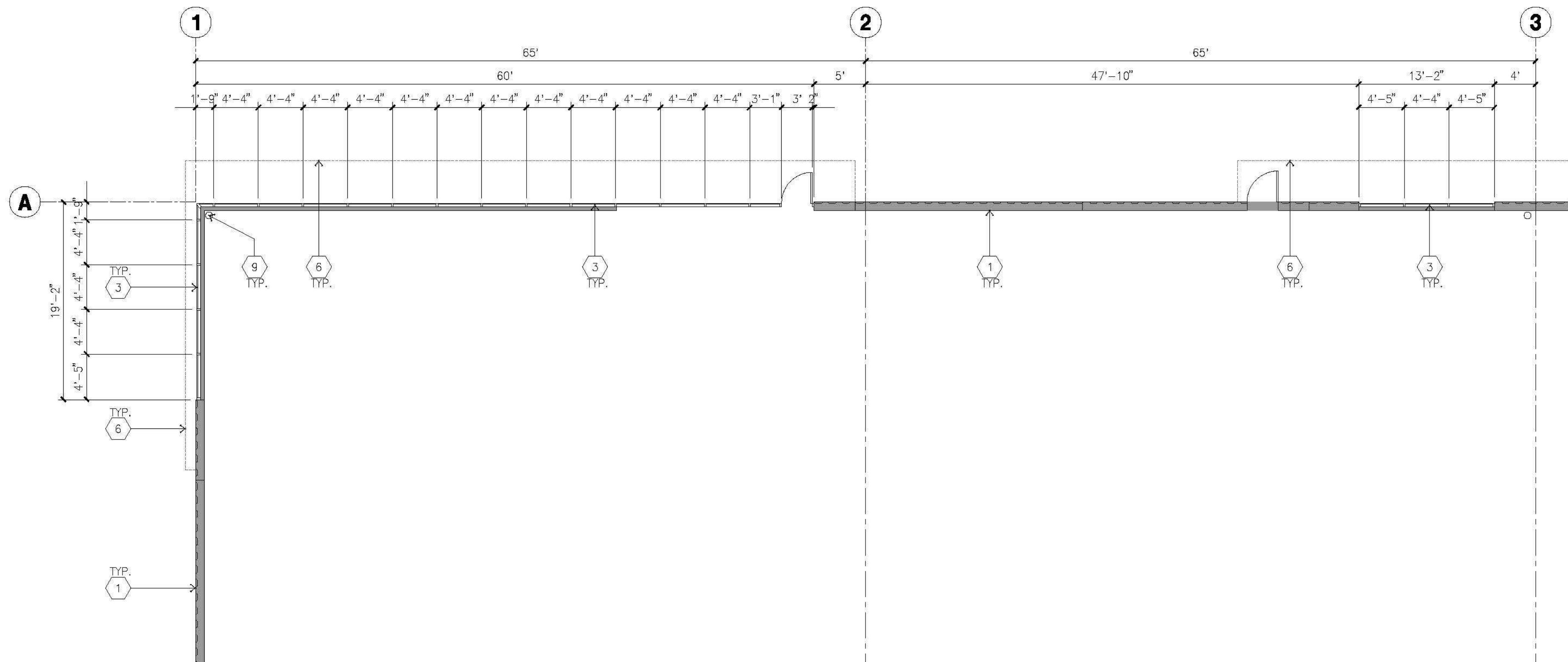


KETNOTES - FLOOR PLAN

- 1 METAL PANEL.
- 2 STRUCTURAL STEEL COLUMN.
- 3 TYPICAL STOREFRONT SYSTEM WITH GLAZING. SEE OFFICE BLOW-UP AND ELEVATIONS FOR SIZE, COLOR AND LOCATIONS.
- 4 3'X7' HOLLOW METAL EXTERIOR MAN DOOR.
- 5 12' X 14' DRIVE THRU. SECTIONAL OH., STANDARD GRADE.
- 6 CANOPY
- 7 CONC. FILLED GUARD POST. 6" DIA. U.N.O.. 42"H.
- 8 EXTERIOR DOWNSPOUT WITH OVERFLOW SCUPPER,
- 9 INTERIOR DOWNSPOUT WITH OVERFLOW SCUPPER,

GENERAL NOTES - FLOOR PLAN

- A. NOT USED
- B. FIRE HOSE LOCATIONS SHALL BE APPROVED PER FIRE DEPARTMENT.
- C. THE BUILDING FLOOR SLAB IS SLOPED, SEE "C" DRAWINGS FOR FINISH SURFACE ELEVATIONS.
- D. NOT USED
- E. WAREHOUSE INTERIOR STEEL WALLS ARE PAINTED WHITE. COLUMNS ARE TO RECEIVE PRIMER ONLY. ALL GYP. BD. WALLS IN WAREHOUSE TO RECEIVE 1 COAT OF WHITE TO COVER.
- F. SLOPE POUR STRIP 1/2" TO EXTERIOR AT ALL MANDOOR EXITS.
- G. ALL DIMENSIONS ARE TO THE FACE OF STEEL PANEL WALL, GRIDLINE, OR FACE OF STUD U.N.O.
- H. SEE CIVIL DRAWINGS FOR POINT OF CONNECTIONS TO OFF-SITE UTILITIES. CONTRACTOR TO VERIFY ACTUAL UTILITY LOCATIONS. PLUMBING/ELECTRICAL COORDINATION.
- I. NOT USED.
- J. CONTRACTOR TO PROTECT AND KEEP THE FLOOR SLAB CLEAN. ALL EQUIPMENT TO BE DIAPERED INCLUDING CARS AND TRUCKS.
- K. ALL EXIT MAN DOORS IN WAREHOUSE TO HAVE ILLUMINATED EXIT SIGN. HARDWARE.
- L. HIGHLY FLAMMABLE AND COMBUSTIBLE MATERIAL MUST BE APPROVED PRIOR TO USE.
- M. EACH EXTERIOR EXIT DOOR SHALL BE IDENTIFIED BY A TACTILE EXIT SIGN WITH THE WORDS "EXIT". THE MOUNTING HEIGHT FOR SUCH SIGNAGE SHALL BE 60" FROM FINISH FLOOR LEVEL TO THE CENTER OF THE SIGN.
- N. NON-ACCESSIBLE DOOR. PROVIDE WARNING SIGN LOCATED IN THE INTERIOR SIDE PER CBC 1133B.1.1.1
- O. ALL ROOF MOUNTED MATERIALS SHALL BE FULLY SCREENED FROM PUBLIC VIEW.



ENLARGED FLOOR PLAN (TYP. TO BLDG. 2 THRU 5)
scale: 1/8"=1'-0"

