

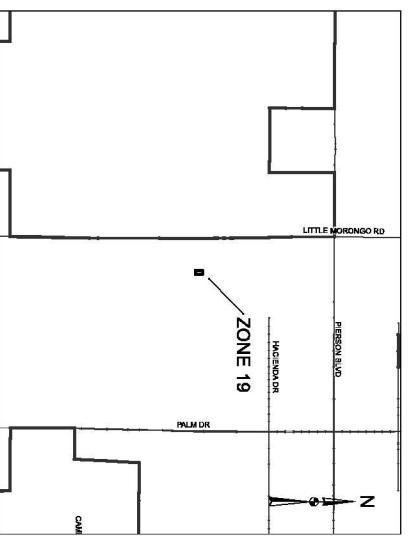
BOUNDARY MAP
SPECIAL PUBLIC SAFETY TAX AREA
ZONE 19 (DHS PROPERTY INVESTMENTS)
CITY OF DESERT HOT SPRINGS
COUNTY OF RIVERSIDE, STATE OF CALIFORNIA
N² OF NW⁴, SEC. 1, T.3S., R.4E.

LEGEND

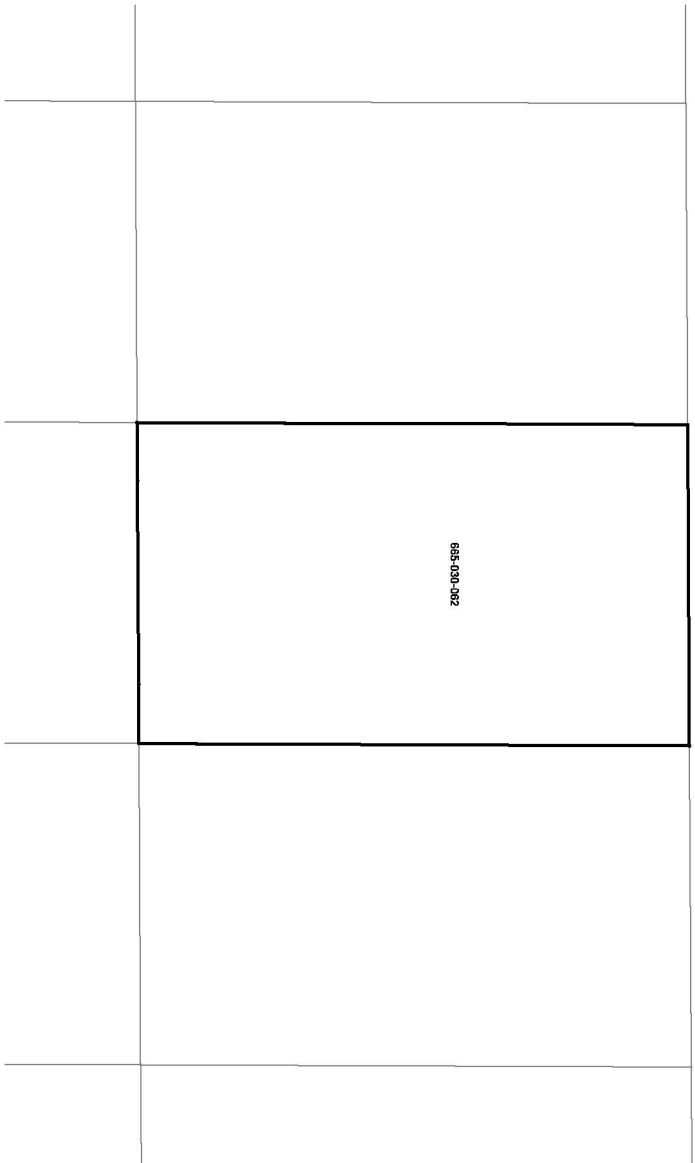
____ ZONE 19 BOUNDARY

XXX-XXX-XXX ASSESSOR PARCEL NUMBER

14TH AVE



VICINITY MAP
NOT TO SCALE



ALBERT A.
WEBB
ASSOCIATES
CONSULTANTS

THIS BOUNDARY MAP CORRECTLY SHOWS THE BOUNDARIES OF ZONE 19 (DHS PROPERTY INVESTMENTS). FOR DETAILS CONCERNING THE LINES AND DIMENSIONS OF LOTS OR PARCELS REFER TO THE COUNTY ASSESSORS MAPS FOR FISCAL YEAR 2016-2017.