

| Luminaire Locations | | | | | | | | | | |
|---------------------|-------|----------|---------|-------|-------|-------------|------|---------|---------|------|
| | | Location | | | | Aim | | | | |
| No. | Label | X | Y | Z | MH | Orientation | Tilt | X | Y | Z |
| 1 | A | 5217.72 | 5188.42 | 20.00 | 20.00 | 270.00 | 0.00 | 5216.22 | 5188.42 | 0.00 |
| 1 | S | 5233.39 | 5123.60 | 20.00 | 20.00 | 0.00 | 0.00 | 5233.39 | 5123.60 | 0.00 |
| 2 | S | 5348.93 | 5123.60 | 20.00 | 20.00 | 0.00 | 0.00 | 5348.93 | 5123.60 | 0.00 |
| 3 | S | 5468.38 | 5123.60 | 20.00 | 20.00 | 0.00 | 0.00 | 5468.38 | 5123.60 | 0.00 |
| 4 | S | 5473.27 | 4972.30 | 20.00 | 20.00 | 180.00 | 0.00 | 5473.27 | 4972.30 | 0.00 |
| 5 | S | 5363.23 | 4972.30 | 20.00 | 20.00 | 180.00 | 0.00 | 5363.23 | 4972.30 | 0.00 |
| 6 | S | 5265.55 | 4972.30 | 20.00 | 20.00 | 180.00 | 0.00 | 5265.55 | 4972.30 | 0.00 |
| 9 | S | 5223.88 | 5108.38 | 20.00 | 20.00 | 270.00 | 0.00 | 5223.88 | 5108.38 | 0.00 |
| 10 | S | 5223.88 | 4995.66 | 20.00 | 20.00 | 270.00 | 0.00 | 5223.88 | 4995.66 | 0.00 |
| 11 | S | 5187.48 | 5187.48 | 20.00 | 20.00 | 180.00 | 0.00 | 5189.34 | 5186.13 | 0.00 |
| 12 | S | 5113.44 | 5076.33 | 20.00 | 20.00 | 90.00 | 0.00 | 5114.79 | 5076.33 | 0.00 |
| 31 | S1 | 5130.03 | 4963.03 | 20.00 | 20.00 | 360.00 | 0.00 | 5130.03 | 4964.36 | 0.00 |
| 1 | SA | 5305.65 | 5192.62 | 20.00 | 20.00 | 180.00 | 0.00 | 5305.65 | 5191.27 | 0.00 |
| 1 | SW | 5525.23 | 5109.40 | 20.00 | 20.00 | 90.00 | 0.00 | 5525.23 | 5109.40 | 0.00 |
| 2 | SW | 5525.23 | 4993.03 | 20.00 | 20.00 | 90.00 | 0.00 | 5525.23 | 4993.03 | 0.00 |

| Statistics | | | | | | |
|-------------|--------|--------|---------|--------|---------|---------|
| Description | Symbol | Avg | Max | Min | Max/Min | Avg/Min |
| Site | + | 2.6 fc | 13.1 fc | 0.0 fc | N/A | N/A |



D-Series Size 2

LED Area Luminaire





Specifications

EPA: 1.1 ft²
(0.10 m²)

Length: 40"
(102.9 cm)

Width: 15"
(38.1 cm)

Height: 7.1/4"
(36.4 cm)

Weight (max): 36 lbs
(16.3 kg)



| | |
|----------------|--|
| Catalog Number | |
| Notes | |
| Type | |

Click on the category icons over the page to see all interactive elements

Introduction

The modern styling of the D-Series is striking yet unobtrusive making a bold, progressive statement even as it blends seamlessly with its environment.

The D-Series distills the benefits of the latest in LED technology into a high performance, high efficiency, long-life luminaire. The outstanding photometric performance results in sites with excellent uniformity, greater pole spacing and lower power density. The Size 2 is ideal for replacing 400-1000W metal halide in area lighting applications with energy savings of up to 80% and expected service life of over 100,000 hours.

| Ordering Information | | | | EXAMPLE: DSX2 LED 80C 1000 40K T4M MVL0T SPA DBXD0 | | | |
|----------------------|----------------------------------|------------------------|--------------------------------|--|--------------------------|----------|--|
| DSX2 LED | | | | | | | |
| Series | LEDs | Drive current | Color temperature | Distribution | Voltage | Mounting | |
| DSX2 LED | | | | | | | |
| Forward optics* | 80C 80 LEDs | 130 580mA | 30K 3000K | T15 Type I Series | T9V5 Type V Series Short | M001* | Shipped including |
| | 100C 100 LEDs | 700 700mA | 40K 4000K | T25 Type II Short | T5S Type V Short | SPA | SPA Square pole mounting |
| | 100C 100 LEDs (R) | 1000 1000 mA | 50K 5000K | T2M Type II Medium | T5M Type V Medium | RPA | RPA Round pole mounting |
| | 100C 100 LEDs (R) forward optics | 1200 1200 mA (I, 2, 3) | AMBRC Amber phosphor converted | T5S Type II 3 Short | T5W Type V Wide | WBA | WBA Wall bracket |
| Rotated optics* | 90C 90 LEDs | | | T3M Type II Medium | BLC Backlight control | 227 | SPUBA Square universal mounting adapter 1 |
| | | | | T17M Forward Three Medium | BKC Left corner cutoff | 341* | SPUBA Backlight universal mounting adapter 1 |
| | | | | | RCO Right corner cutoff | 466* | Shipped separately |
| | | | | | | | KMA0 DBXD0 10 Mount an mounting bracket adapter (specify in order) |

| Control options | | Other options | | Finish |
|--------------------------|---|--------------------------------|--|---------------------------------------|
| Shipped installed | | Shipped & installed | | DOBKD Dark bronze |
| PER | Non-lock receptacle only (no controls) ¹ | HS | House use shielded ² | DOBK Black |
| PER | Non-lock receptacle only (no controls) ² | SE | Single ended (208, 277, 347V) ³ | DOALD Natural aluminum |
| PER | Non-lock receptacle only (no controls) ³ | DF | Double throw (208, 240, 480V) ³ | DOBKD Dark bronze |
| DAG | 0-10V dimming driver (no controls) ⁴ | LS | Low inrush options ⁵ | DOBKD Textured dark bronze |
| DCR | Dimmable and compatible via KROMA [®] (no controls) ⁶ | R90 | Right angled options ⁷ | DOBKD Textured black |
| DS | Dual switching ⁸ | | | DOALD Natural natural aluminum |
| FRN | Marion series, 35-50 mounting height ⁹ | FAO | Field Adjustable Output ¹⁰ | DWKTG Textured white |

[illegible]

18 Available with PO LEDS (POC option) only
19 Recessed luminaires to be specified with PER option. Ordered and shipped as a separate line item from Acuity Brands Controls.

 One Lithonia Way • Conyers, Georgia 30012 • Phone: 800.279.8041 • Fax: 770.918.1209 • www.lithonia.com
© 2011-2016 Acuity Brands Lighting, Inc. All rights reserved.

DSX-LI
Rev. 03/16/16
Page 1 of 4






Designer

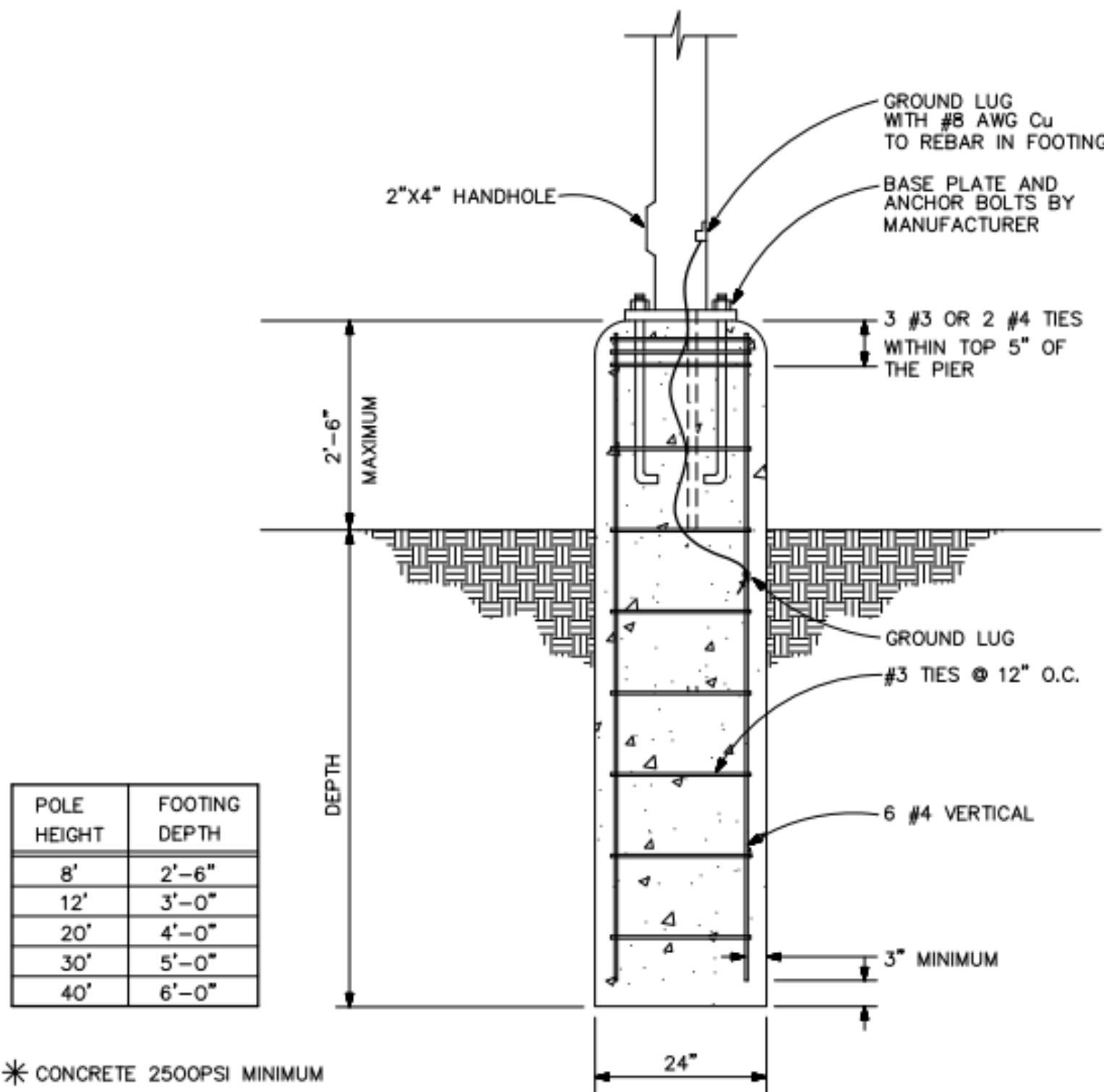
Date
5/4/2016

Scale
Not to Scale

Drawing No.

Summary

| Schedule | | | | | | | | | | | |
|---|-------|---|-----|-------------------------------------|--|------|--------------|-----------------|-----|---------|---|
| Symbol | Label | Image | QTY | Catalog Number | Description | Lamp | Number Lamps | Lumens per Lamp | LLF | Wattage | Polar Plot |
|  | A |  | 1 | DSX2 LED 80C 530 AMBPC T4M MVOLT HS | DSX2 LED W/4 (20) LED LIGHT ENGINES, (1) 530mA DRIVER, AMBPC LED, TYPE T4M OPTICS WITH HOUSE SIDE SHIELD | LED | 1 | 8282 | 0.9 | 133 |  Max: 5866cd |
|  | S |  | 8 | DSX2 LED 100C 700 40K T4M MVOLT | DSX2 LED W/2 (30) LED & 2 (20) LED LIGHT ENGINES, (2) 700mA DRIVERS, 4000K LED, TYPE T4M OPTICS | LED | 1 | 23038 | 0.9 | 227 |  Max: 15201cd |
|  | S1 |  | 3 | DSX2 LED 100C 1000 40K T4TM MVOLT | DSX2 LED WITH 100 LEDs @1000mA, 4000K, TYPE FORWARD THROW MEDIUM OPTICS | LED | 1 | 36779 | 0.9 | 360 |  Max: 24233cd |
|  | S2 |  | 0 | DSX2 LED 100C 1000 40K T4TM MVOLT | DSX2 LED WITH 100 LEDs @1000mA, 4000K, TYPE FORWARD THROW MEDIUM OPTICS | LED | 1 | 36779 | 0.9 | 720 |  Max: 24233cd |
|  | SA |  | 1 | DSX2 LED 100C 1000 40K T2M MVOLT | DSX2 LED WITH 100 LEDs @1000mA, 4000K, TYPE 2 MEDIUM OPTICS | LED | 1 | 36550 | 0.9 | 360 |  Max: 25989cd |
|  | SW |  | 2 | DSX2 LED 100C 1000 40K T2M MVOLT | DSX2 LED WITH 100 LEDs @1000mA, 4000K, TYPE 2 MEDIUM OPTICS | LED | 1 | 36550 | 0.9 | 360 |  Max: 25989cd |



BOLTED LIGHT POLE BASE DETAIL
NO SCALE

1

E7.1