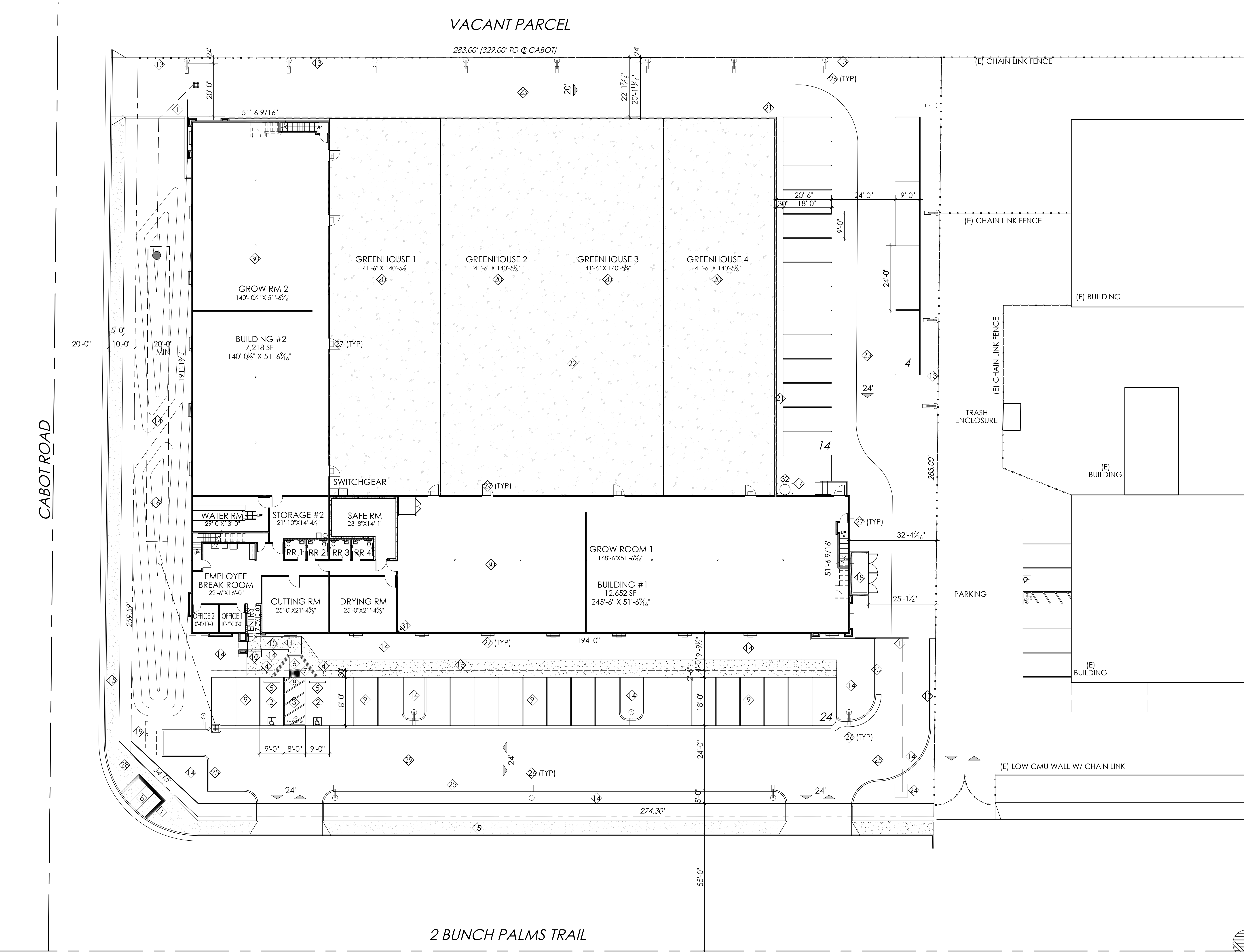


# DESERT HOT SPRINGS WAREHOUSE



2 BUNCH PALMS TRAIL

SITE PLAN SC 3/8"=1'-0"

1	TITLE SHEET, SITE PLAN
CIVIL	
1 OF 1	PRELIMINARY GRADING PLAN
1 OF 1	TOPOGRAPHICAL EXHIBIT / EXISTING SITE PLAN
1 OF 1	PRELIMINARY HYDROLOGY PLAN
ARCHITECTURAL	
2	1ST FLOOR PLAN
3	2ND FLOOR PLAN
4	ROOF PLAN
5	ELEVATIONS
6	ELEVATIONS and SECTIONS
ELECTRICAL	
E-1	SITE ELECTRICAL PLAN
E-2	PHOTOMETRIC PLAN
LANDSCAPE	
LS-1	LANDSCAPE FLOOR PLAN
LS-2	LANDSCAPE IRRIGATION PLAN
LS-3	LANDSCAPE DETAILS and SPECIFICATION
	PHOTOGRAPHIC EXHIBIT

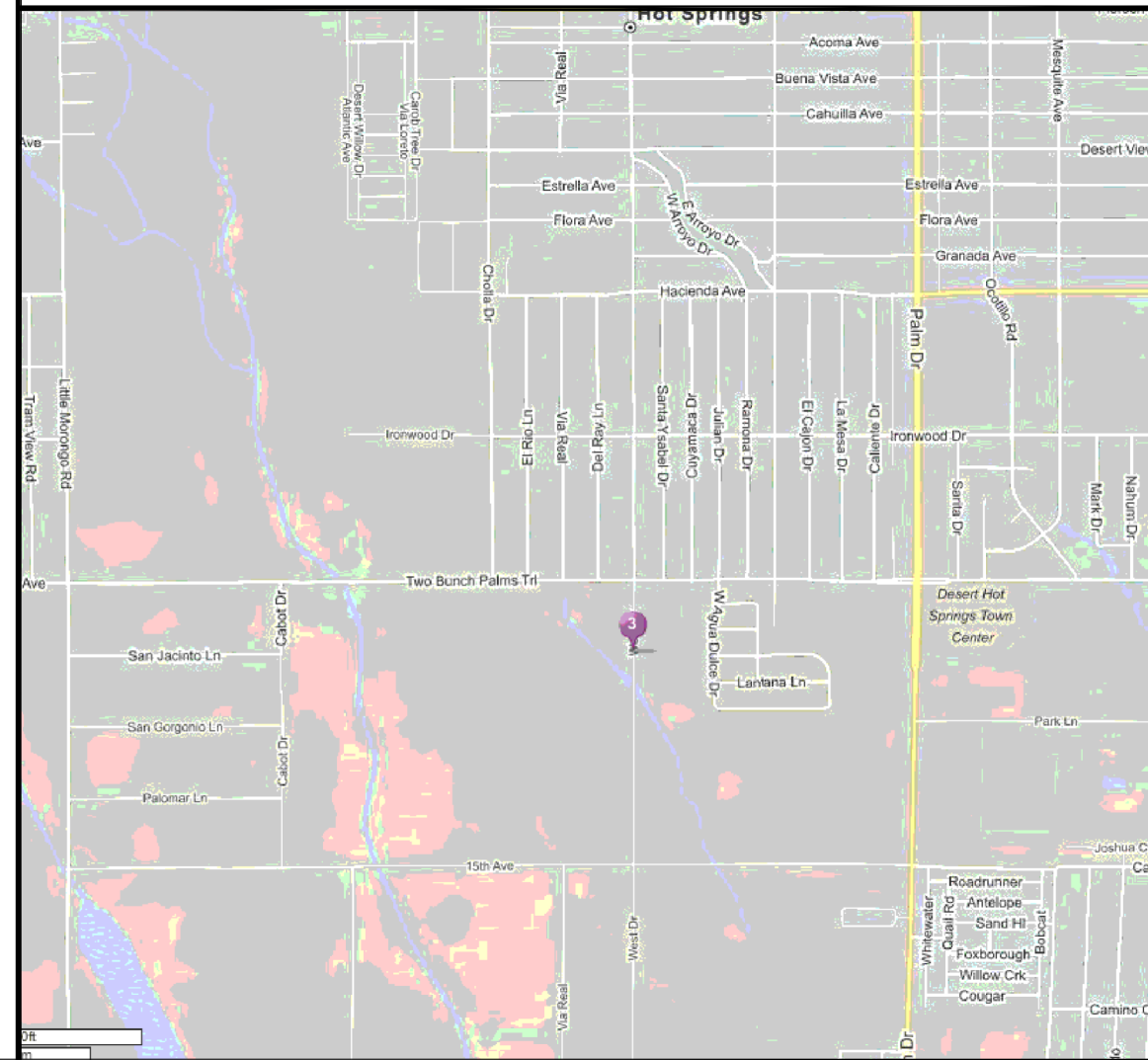
## SHEET INDEX

SITE SUMMARY	
SITE AREA:	93.107 SF
LOT COVERAGE:	2.14 ACRES
OCCUPANCY:	67.47% B/F-1/R-2
PHASE I	
BUILDING AREA:	
1ST FLOOR	
GROW ROOM #1:	168'-6 3/4" X 51'-6 9/16" 8,689 SF
GROW ROOM #2:	139'-6 3/4" X 51'-6 9/16" 7,194 SF
ADMIN / SUPPORT	51'-6 9/16" X 77'-0" 3,969 SF
	19,659 SF
2ND FLOOR	
GROW ROOM #3:	219'-1 9/16" X 51'-6 9/16" 11,137 SF
GROW ROOM #4:	153'-1 5/64" X 51'-6 9/16" 7,631 SF
APARTMENT	26'-5" X 27'-6" 891 SF
	19,659 SF
TOTAL BUILDING SQUARE FOOTAGE	39,511 SF
GREEN HOUSES:	(4) 41'-6" X 140'-5 1/8" 23,309 SF
TOTAL BUILDING SQUARE FOOTAGE	62,820 SF
ITEM	SQ. FTG. PRKG RATIO REQ'D STALLS
WAREHOUSE	34,360 SF 1 / 2500 SF 14 STALLS
GREEN HOUSES	23,309 SF 1 / 2500 SF 9 STALLS
OFFICE / SUPPORT	3,969 SF 1 / 250 SF 16 STALLS
APARTMENT	891 SF 5 STALLS 2 STALLS
TOTAL STALLS REQUIRED	41 STALLS
STALLS PROVIDED	42 STALLS
HARDSCAPE SQUARE FOOTAGE	53,335 SF
LANDSCAPE SQUARE FOOTAGE	12,270 SF

## SITE SUMMARY

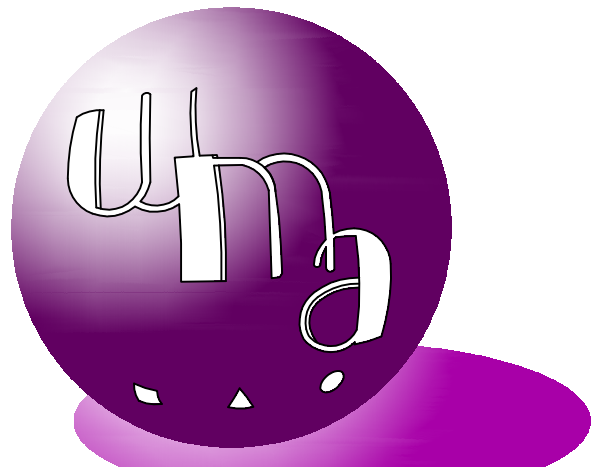
- SITE PLAN NOTES
- 1 ROLLING SECURITY GATE
  - 2 ACCESSIBLE VAN STALL
  - 3 LOADING ZONE
  - 4 SIGNAGE
  - 5 CONC. WHEEL STOP
  - 6 CURB RAMP
  - 7 WARNING GROOVES
  - 8 TRUNCATED DOMES
  - 9 STANDARD STALL
  - 10 RAMP
  - 11 1/2" STEEL RAILS
  - 12 CONC. STEP W/ WARNING GROOVES
  - 13 8'-0" CHAIN LINK SECURITY FENCE
  - 14 PLANTER
  - 15 CONC. WALKWAY
  - 16 RETENTION TANK
  - 17 STEEL BOLLARD
  - 18 TRASH ENCLOSURE
  - 19 MONUMENT
  - 20 GREEN HOUSE
  - 21 RETAINING WALL
  - 22 CONCRETE PAD
  - 23 ACCESS ROAD
  - 24 TRANSFORMER
  - 25 CONCRETE CURB
  - 26 15'-0" TALL LIGHT STANDARD W/ CONCRETE BASE
  - 27 ESPALIER
  - 28 (E) FIRE HYDRANT
  - 29 ASPHALT PARKING LOT
  - 30 BUILDING
  - 31 SPRINKLER RISER
  - 32 500 GALLON PROPANE TANK

## SITE PLAN KEY NOTES



VICINITY MAP

© 2015 WMA / WILLIAM MASON ARCHITECT, INC.



ARCHITECTURE PLANNING INTERIORS  
WILLIAM MASON, ARCHITECT INC.  
3276 DAKOTA AVENUE  
COSTA MESA, CALIFORNIA 92626  
714.427.0688 FAX: 714.724.3990  
EMAIL: Bill@WilliamMasonArchitectll.com

ARCHITECT'S STAMP



CONSULTANT'S STAMP

△	DATE	REVISION

OWNER

BUNCH PALMS TRAIL, LLC

(951)640-7392

PROJECT:

DESERT HOT SPRINGS  
WAREHOUSE

APN# 665-030-058  
DESERT HOT SPRINGS, CA

PROJECT NO. 15.004.00

SCALE: AS NOTED

DATE: 10.16.15

DRAWN BY:

REVIEWED BY:

ISSUED FOR BID

ISSUED FOR CONST.

SHEET TITLE:

TITLE SHEET  
and  
SITE PLAN

SHEET NO.

1