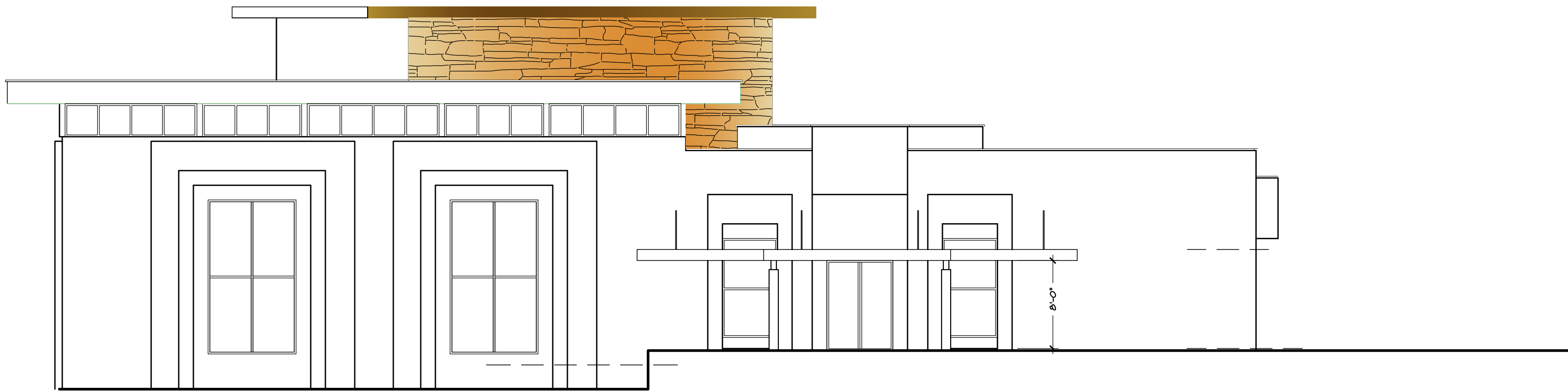
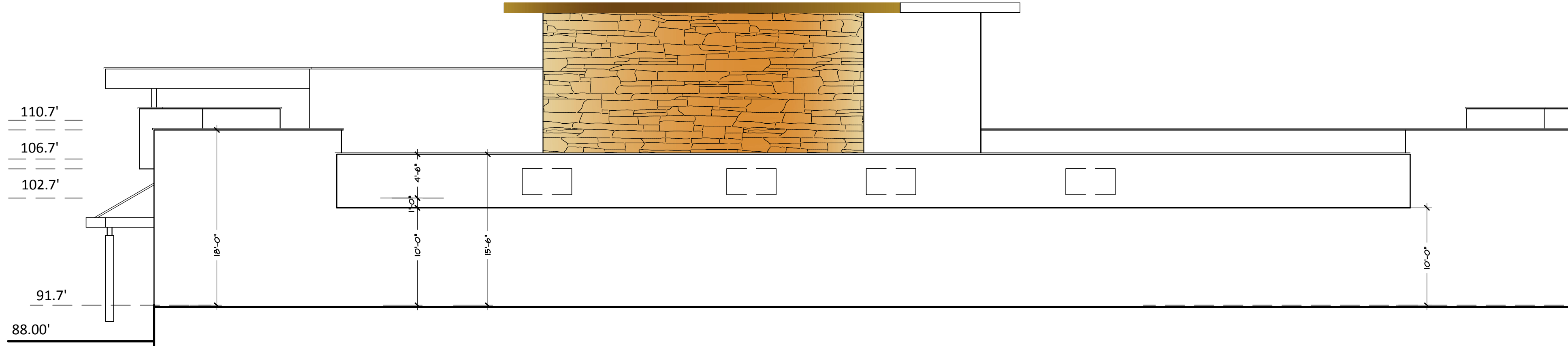
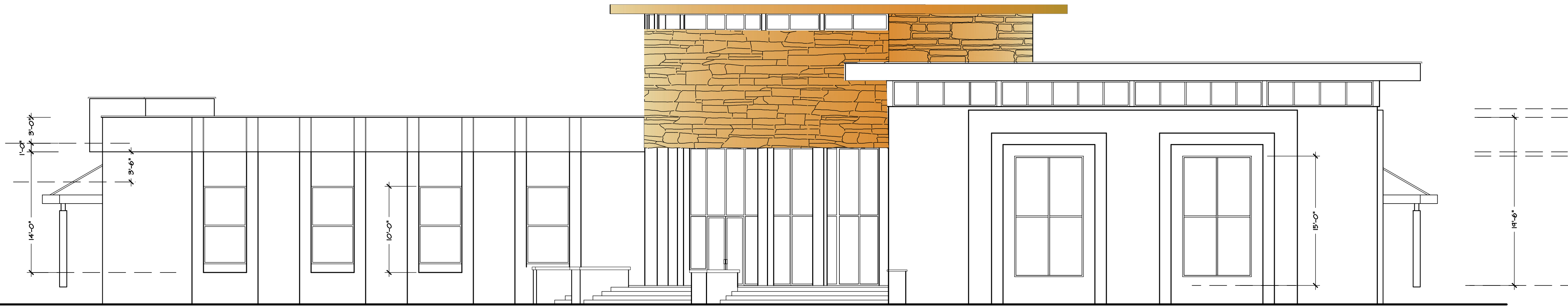


PA11875 PALM DRA1 - 012517.dwg, 1/25/2017 9:21:26 PM, DWG To PDF.pc3



1 ELEVATIONS

Scale: 1/8"=1'-0"

REVISION	BY
△	
△	
△	
△	

THE ABOVE DRAWINGS AND SPECIFICATIONS AND IDEAS, DESIGNS AND ARRANGEMENTS REPRESENTED THEREBY ARE AND SHALL REMAIN THE PROPERTY OF THE ARCHITECT AND ENGINEERS OF RECORD AND NO PART THEREOF SHALL BE COPIED, DISCLOSED TO OTHERS OR USED IN CONNECTION WITH ANY WORK OR PROJECT OTHER THAN THE SPECIFIC PROJECT FOR WHICH THEY HAVE BEEN PREPARED AND DEVELOPED WITHOUT THE WRITTEN CONSENT OF THE ARCHITECT OR ENGINEERS OF RECORD. VISUAL CONTACT WITH THESE DRAWINGS & SPECIFICATIONS SHALL CONSTITUTE CONCLUSIVE EVIDENCE OF THESE RESTRICTIONS. WRITTEN DIMENSIONS ON THESE DRAWINGS SHALL HAVE PRECEDENCE OVER SCALED DIMENSIONS. CONTRACTORS SHALL VERIFY, AND BE RESPONSIBLE FOR ALL DIMENSIONS & CONDITIONS ON THE JOB, AND THIS OFFICE MUST BE NOTIFIED OF ANY VARIATIONS FROM THE DIMENSIONS AND CONDITIONS SHOWN BY THESE DRAWINGS. SHOP DETAILS AND DRAWINGS MUST BE SUBMITTED TO THIS OFFICE FOR REVIEW BEFORE PROCEEDING WITH FABRICATION.

The use of these plans & specifications shall be restricted to the original site for which they were prepared & publication thereof is expressly limited to such use, reproduction, or re-use by any method is prohibited, title to the plans & specifications remain with GORMAN DEVELOPMENT INC.

Job Title: CITY HALL

Job Address: 11875 PALM DR.
DESERT HOT SPRING, CA

PAK-SHA, INC.

1815 Verdugo Vista Drive, Glendale, CA 91208

Phone: (818) 220-2625

Date	12-20-2016
Scale	1/16"=1'-0"
Drawn By:	S.T.
Check By:	CH. G.
Job	
Sheet	
A-4	
Of	Sheets