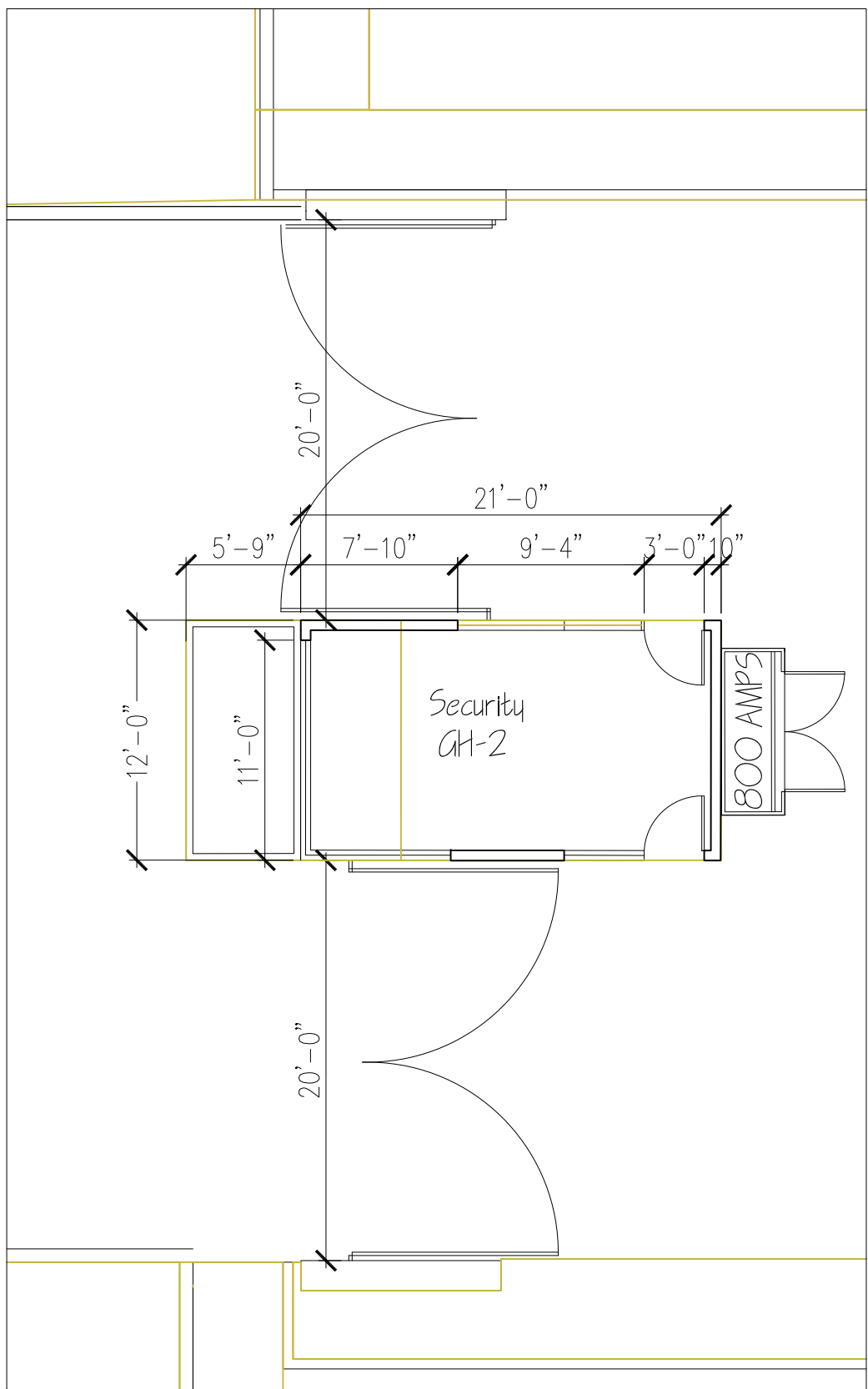
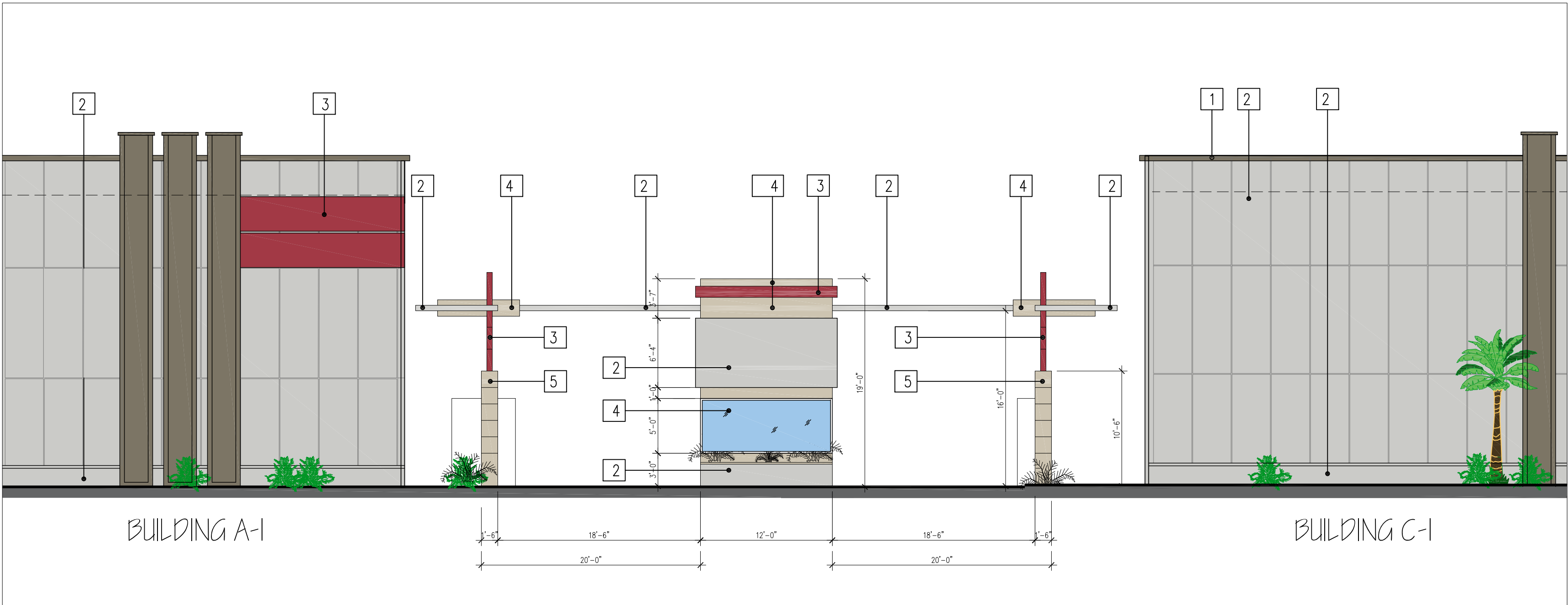


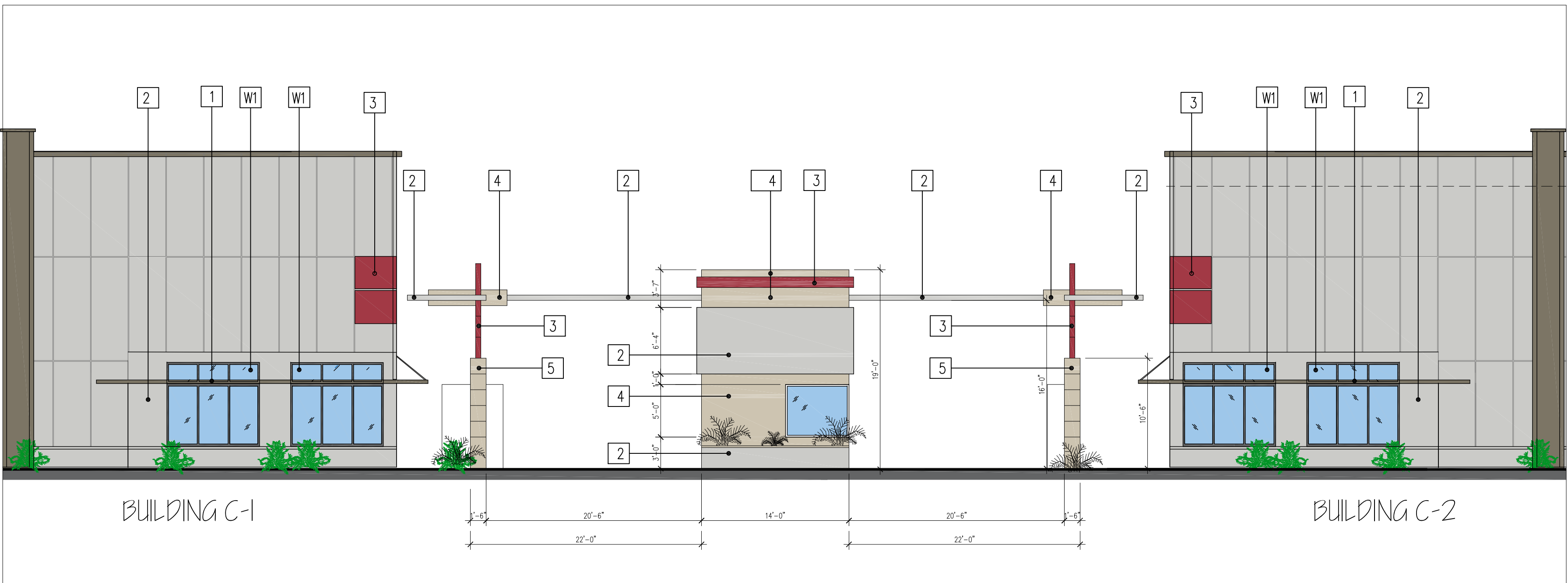
1 SECURITY GUARD -1 FLOOR PLAN  
294 SF.



2 SECURITY GUARD -2 FLOOR PLAN  
252 SF.



3 SECURITY GUARD -A FRONT ELEVATION



4 SECURITY GUARD -2 FRONT ELEVATION

EXTERIOR FINISHES

SYM	MATERIAL	COLOR
1	VERTICAL ELEMENTS, CAP FLASHING AND ARCHITECTURAL CANOPY	Antique Bronze R: 0.26 E: 0.86 SRI: 25
2	METAL SPAN - TUFF CAST	Light Gray R: 0.35 E: 0.86 SRI: 37
3	METAL SPAN - TUFF CAST	PAINTED DARK RED
4	METAL SPAN - TUFF CAST	Medium Beige R: 0.39 E: 0.86 SRI: 42
5	16" MASONRY WALL	Medium Beige R: 0.39 E: 0.86 SRI: 42

All Met-Span colors are formulated to provide maximum energy-efficiency and solar reflectivity. All standard available Premium I and Premium II colors have been formulated for maximum solar reflectance.

FLOOD GATE BY PS DOORS

PD-520  
BY PS DOORS

SHADE CANOPIES



PERSONNEL DOOR CANOPIES

Metallic Products keeps you covered with personnel door canopies. Make sure you have economical and attractive overhead protection from the elements with our canopies. This product is specifically designed to withstand the elements. For installation instructions, please visit [mpvent.com/products/canopies](http://mpvent.com/products/canopies)

REVISIONS

BY

REGISTERED PROFESSIONAL ENGINEER  
MICHAEL M. SHADYAK  
3977  
EXP. 9/30/16  
STRUCTURAL  
STATE OF CALIFORNIA

THE USE OF THESE PLANS AND SPECIFICATION SHALL BE RESTRICTED TO THE SPECIFIC SITE FOR WHICH THEY WERE PREPARED AND PUBLICATION THEREOF SHALL BE EXPRESSLY LIMITED TO SUCH USE. RE-USE, REPRODUCTION OR PUBLICATION BY ANY METHOD, IN WHOLE OR IN PART, IS PROHIBITED. TITLE TO THE PLANS AND SPECIFICATIONS REMAINS THE PROPERTY OF MERJ, LLC. ANY REUSE OR REPRODUCTION WITHOUT WRITTEN CONSENT OF MERJ, LLC SHALL BE AT THE USER'S SOLE RISK. THESE PLANS AND SPECIFICATIONS SHALL CONSTITUTE PRIMA FACIE EVIDENCE OF THE ACCEPTANCE OF THE RESTRICTIONS.

MORONGO INDUSTRIAL PARK

MERJ, LLC; A CALIFORNIA LIMITED LIABILITY CO.  
LITTLE MORONGA RD  
CITY OF DESERT HOT SPRINGS

Shad Design Group  
Architectural, Planning & Engineering  
5051 TECH WAY SUITE 500  
SAN JOSE, CA 95128  
(408) 472-4285 FAX (408) 877-1928  
email: shad@shadgroup.net

DATE: 6-20-2016

SCALE: 1/8=1'-0"

DRAWN: MS

JOB NO.

A-08

OF SHEETS