

# **Riverside County Fire Department/ CAL FIRE**

## **Emergency Incident Statistics**



**John R. Hawkins**

**Fire Chief**

7/20/2016

**Report Provided By: Riverside County Fire Department**

**Communications and Technology Division**

**GIS Section**

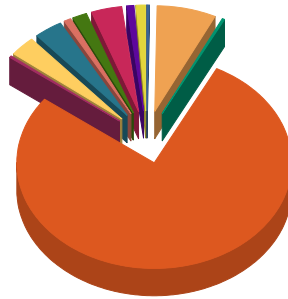
**Please refer to Map and Incident by Battalion, Station, Jurisdiction**

Incidents Reported for the month of June, 2016 and Desert Hot Springs City

\*Incidents are shown based on the primary response area for the incident location. This does not represent total response times for all units only the first unit in.

## Response Activity

### Incidents Reported for the month of June,2016 and Desert Hot Springs City



Com Fire	1	0.2%
False Alarm	29	7.1%
Haz Mat	1	0.2%
Medical	317	77.7%
Multi-Fam Dwelling Fire	1	0.2%
Other Fire	13	3.2%
Public Service Assist	13	3.2%
Res Fire	4	1.0%
Standby	6	1.5%
Traffic Collision	15	3.7%
Vehicle Fire	4	1.0%
Wildland Fire	4	1.0%
Total:	408	100.0%

Com Fire	1
False Alarm	29
Haz Mat	1
Medical	317
Multi-Fam Dwelling Fire	1
Other Fire	13
Public Service Assist	13
Res Fire	4
Standby	6
Traffic Collision	15
Vehicle Fire	4
Wildland Fire	4
<b>Incident Total:</b>	<b>408</b>

### Average Enroute to Onscene Time\*

Enroute Time = When a unit has been acknowledged as responding. Onscene Time = When a unit has been acknowledge as being on scene. For any other statistic outside Enroute to Onscene please contact the IT Help Desk at 951-940-6900

<5 Minutes	+5 Minutes	+ 10 Minutes	+ 20 Minutes	Average	% 0 to 5 min
311	71	6	0	3.6	80.2%

The following incidents are included in the total number of records but not in the average time HZM, HZMMC, OAC, OAF, OAM, OAMAD, OAMAI, OAMTE, OAMVA, OAP, OAR, OAV, OUT, OOU, LEB, LEO, LEI, BRNPMT, OES, PAA, PAD, PAF, PAO, PAP, HFS, HFSAM, HFSCA, HSBT, HSBTC, HSBTS, HSBTV, HSE, HSG

## Incidents by Battalion, Station and Jurisdiction

			Com Fire	False Alarm	Haz Mat	Medical	Multi-Fa m	Other Fire	Public Service	Res Fire	Standby	Traffic Collisio	Vehicle Fire	Wildlan d Fire	Total	
Battalion 10	Station 35 Thousand Palms	Desert Hot Springs	0	1	0	0	0	0	0	0	0	0	0	0	1	
		Station Total	0	1	0	0	0	0	0	0	0	0	0	0	0	1
	Station 36 North Palm Springs	Desert Hot Springs	0	2	0	10	0	1	0	0	0	0	2	0	1	16
		Station Total	0	2	0	10	0	1	0	0	0	0	2	0	1	16
	Station 37 Desert Hot Springs	Desert Hot Springs	1	26	1	307	1	12	13	4	6	13	4	3	391	391
		Station Total	1	26	1	307	1	12	13	4	6	13	4	3	3	391
	Battalion Total		1	29	1	317	1	13	13	4	6	13	4	4	4	408
Grand Total			1	29	1	317	1	13	13	4	6	15	4	4	408	

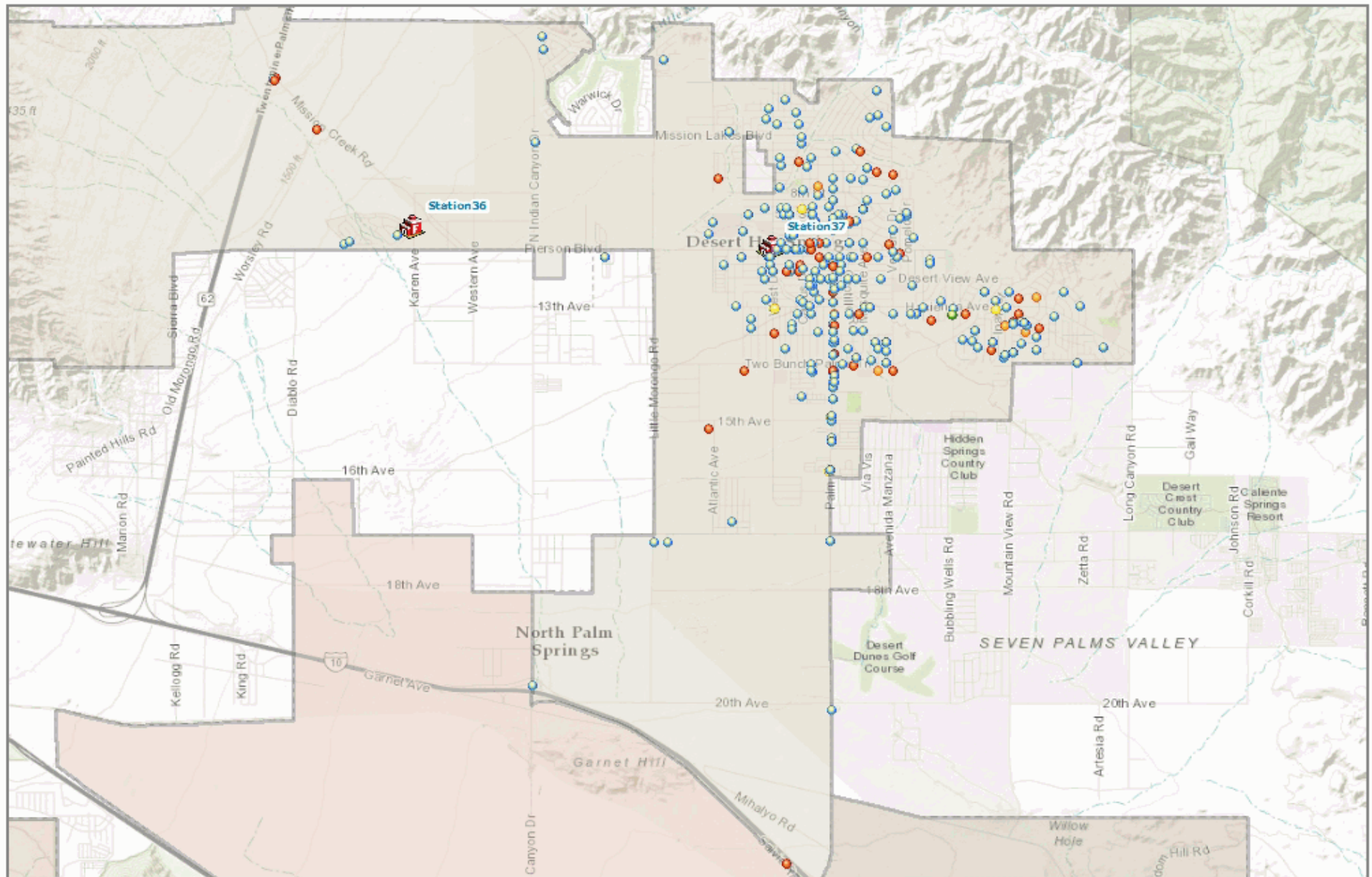
## Incidents by Jurisdiction

	Com Fire	False Alarm	Haz Mat	Medical	Multi-Fa m	Other Fire	Public Service	Res Fire	Standby	Traffic Collision	Vehicle Fire	Wildland Fire	Total
Desert Hot Springs	1	29	1	317	1	13	13	4	6	15	4	4	408
<b>Grand Total</b>	<b>1</b>	<b>29</b>	<b>1</b>	<b>317</b>	<b>1</b>	<b>13</b>	<b>13</b>	<b>4</b>	<b>6</b>	<b>15</b>	<b>4</b>	<b>4</b>	<b>408</b>

## Incidents by Supervisorial District - Summary

	DISTRICT 4 JOHN BENOIT	Grand Total
Com Fire	1	1
False Alarm	29	29
Haz Mat	1	1
Medical	317	317
Multi-Fam Dwelling Fire	1	1
Other Fire	13	13
Public Service Assist	13	13
Res Fire	4	4
Standby	6	6
Traffic Collision	15	15
Vehicle Fire	4	4
Wildland Fire	4	4
<b>Total</b>	<b>408</b>	<b>408</b>

MONTH = 6 and YEAR = 2016 and CITYNAME = 'Desert Hot Springs'



### Legend

- |  |  |   |              |
|--|--|---|--------------|
| <span style="color: red;">●</span> Fire      | <span style="color: purple;">●</span> Other Misc             | <span style="border: 1px solid black; display: inline-block; width: 15px; height: 10px;"></span> Riverside County | Fire Station |
| <span style="color: green;">●</span> Haz Mat | <span style="color: orange;">●</span> Public Service Assists | <span style="border: 1px solid green; display: inline-block; width: 15px; height: 10px;"></span> Reservations     | Casinos      |
| <span style="color: blue;">●</span> Medical  | <span style="color: yellow;">●</span> Hazard                 |   |              |



Riverside County Fire GIS