

Riverside County Fire Department/ CAL FIRE

Emergency Incident Statistics



John R. Hawkins

Fire Chief

6/6/2016

Report Provided By: Riverside County Fire Department

Communications and Technology Division

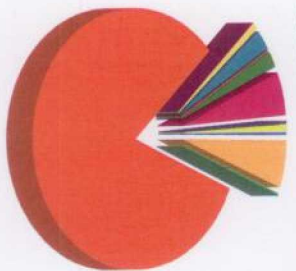
GIS Section

Please refer to Map and Incident by Battalion, Station, Jurisdiction

Incidents Reported for the month of May, 2016 and Desert Hot Springs City
*Incidents are shown based on the primary response area for the incident location. This does not represent total response times for all units only the first unit in.

Response Activity

Incidents Reported for the month of May, 2016 and Desert Hot Springs City



Com Fire	1	0.3%
False Alarm	23	5.9%
Haz Mat	1	0.3%
Medical	319	81.8%
Multi-Fam Dwelling Fire	1	0.3%
Other Fire	3	0.8%
Public Service Assist	9	2.3%
Res Fire	1	0.3%
Standby	7	1.8%
Traffic Collision	21	5.4%
Vehicle Fire	1	0.3%
Wildland Fire	3	0.8%
Total	390	100.0%

Com Fire
False Alarm
Haz Mat
Medical
Multi-Fam Dwelling Fire
Other Fire
Public Service Assist
Res Fire
Standby
Traffic Collision
Vehicle Fire
Wildland Fire

Incident Total:

390

Average Enroute to Onscene Time*

Enroute Time = When a unit has been acknowledged as responding. Onscene Time = When a unit has been acknowledge as being on scene. For any other statistic outside Enroute to Onscene please contact the IT Help Desk at 951-940-6900

<5 Minutes	+5 Minutes	+10 Minutes	+20 Minutes	Average	% 0 to 5 min
281	81	12	0	4.1	75.1%

The following incidents are included in the total number of records but not in the average time HZM, HZMMC, OAC, OAF, OAM, OAMAD, OAMAI, OAMTE, OAMVA, OAP, OAR, OAV, OUT, OOU, LEB, LEO, LEI, BRNPMT, OES, PAA, PAD, PAF, PAO, PAP, HFS, HFSAM, HFSCA, HSBT, HSBTC, HSBTV, HSE, HSG

Incidents by Battalion, Station and Jurisdiction

		Com	False	Haz Mat	Medical	Multi-Fa	Other	Public	Res	Standby	Traffic	Vehicle	Wildlan	Total
		Fire	Alarm			m	Fire	Service	Fire		Collisio	Fire	d Fire	
Battalion 10	Station 35 Thousand Palms	0	0	0	0	0	0	0	0	0	1	0	0	1
		0	0	0	0	0	0	0	0	0	1	0	0	1
	Station Total	0	0	0	0	0	0	0	0	0	1	0	0	20
	Station 36 North Palm Springs	0	0	0	13	0	1	1	0	0	4	0	1	20
		0	0	0	13	0	1	1	0	0	4	0	1	20
	Station Total	0	0	0	13	0	1	1	0	0	4	0	1	369
	Station 37 Desert Hot Springs	1	23	1	306	1	2	8	1	7	16	1	2	369
Battalion Total	Station Total	1	23	1	306	1	2	8	1	7	16	1	2	390
		1	23	1	319	1	3	9	1	7	21	1	3	390
Grand Total		1	23	1	319	1	3	9	1	7	21	1	3	390

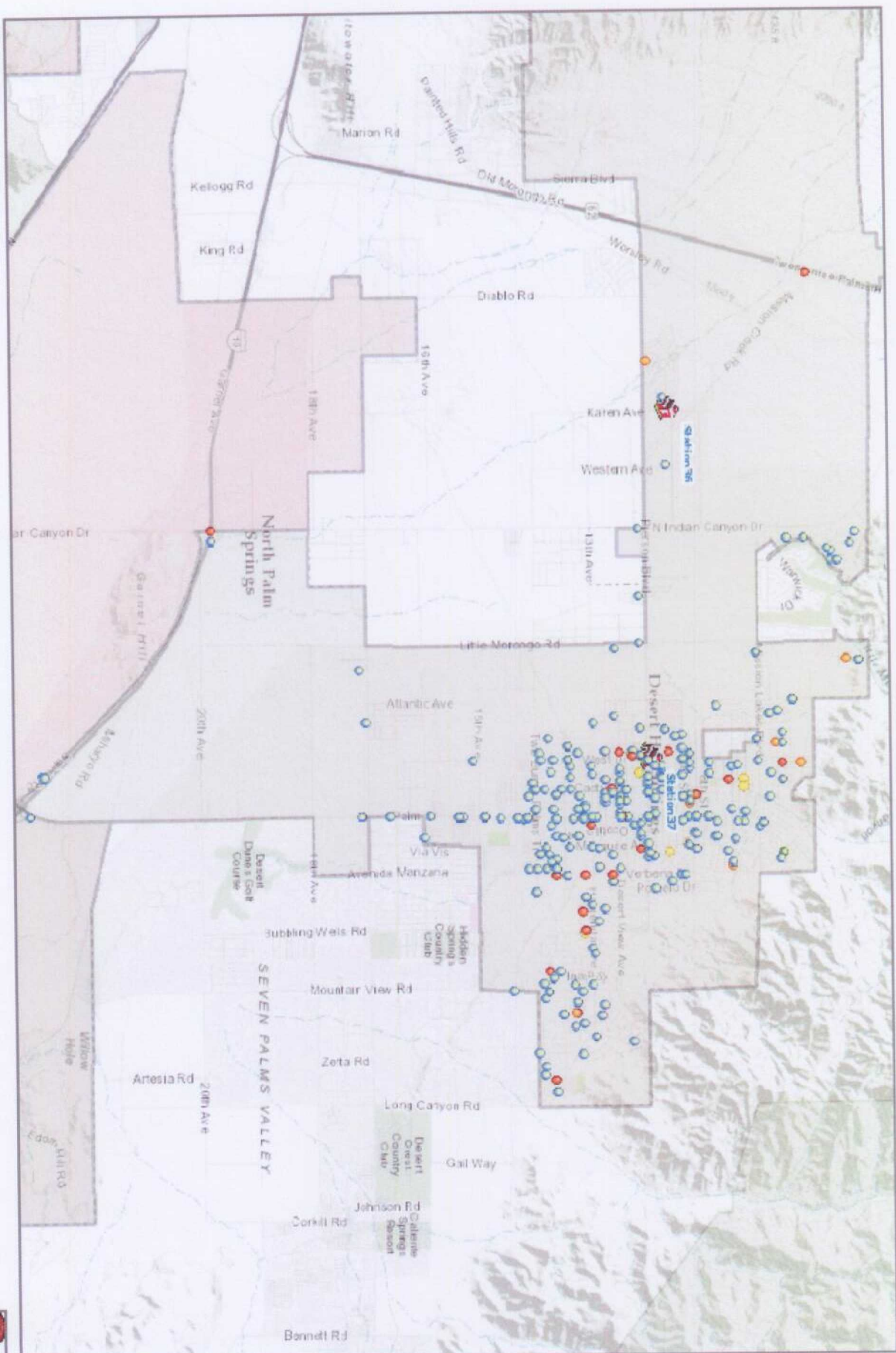
Incidents by Jurisdiction

	Com Fire	False Alarm	Haz Mat	Medical	Multi-Fa m	Other Fire	Public Service	Res Fire	Standby	Traffic Collision	Vehicle Fire	Wildland Fire	Total
Desert Hot Springs	1	23	1	319	1	3	9	1	7	21	1	3	390
Grand Total	1	23	1	319	1	3	9	1	7	21	1	3	390

Incidents by Supervisorial District - Summary

	DISTRICT 4 JOHN BENOIT	Grand Total
Com Fire	1	1
False Alarm	23	23
Haz Mat	1	1
Medical	319	319
Multi-Fam Dwelling Fire	1	1
Other Fire	3	3
Public Service Assist	9	9
Res. Fire	1	1
Standby	7	7
Traffic Collision	21	21
Vehicle Fire	1	1
Wildland Fire	3	3
Total	390	390

MONTH = 5 and YEAR = 2016 and CITYNAME = 'Desert Hot Springs'



Legend

- Fire
- Haz Mat
- Medical
- Other Mtu
- Public Service Assists
- Hazard
- Riverside County
- Reservations
- Fire Station
- Casinos



Riverside County Fire GIS

Last Updated 6/6/2016 3:1

*Incidents are shown based on the primary response area for the incident location. This does not represent total response times for all units only the first unit in.